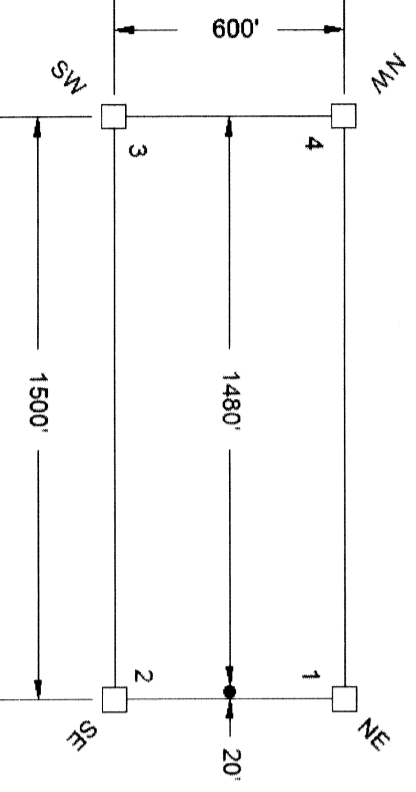


LOCATION DATES:  
13:30 located February 24, 2008

NOTES: From the NW corner of PN-21 to BM-5998  
bearing south 70 deg 7 min, 44 sec east, distance of 3564 ft.



LEGEND:  
□ - CORNERS  
● - LOCATION MARKER

**PN CLAIMS  
PENNSYLVANIA  
MINING DISTRICT**

DATE	FILE NAME	REVISION NUMBER
DECEMBER 2008	MAPINFO FILE	MAPINFO FILE
PROJECTION: LAI (NAD 83)	PLOT SCALE 1" = 300'	DRAWN BY: ZSH
		MODIFIED BY: ZSH

LOCATED BY:  
ZACHARY S. HENDERSON  
AGENT FOR  
**INTOR RESOURCES, INC.**  
231 Cherry Avenue, Suite 201  
Albany, CA 95003  
EMAIL: billhenderson@earthlink.net  
PH: (530) 887-9134

**DOC # 0133510**  
 OFFICIAL RECORD  
 Recordable recording fee: \$10.00  
 Recording fee: \$274.00  
 Leslie Bauder - Recorder  
 Phone: (530) 887-9134  
 Fax: (530) 887-9132  
 Book-227 Page- 0412  
 0133510

1 1