



IRIS MINE

DOC # 0133386

01/15/2009

03:57 PM

Official Record

Recording requested By  
WESLEY BUIST

Lincoln County - NV

Leslie Boucher - Recorder

Fee: \$19.00

Page 1 of 1

RPTT:

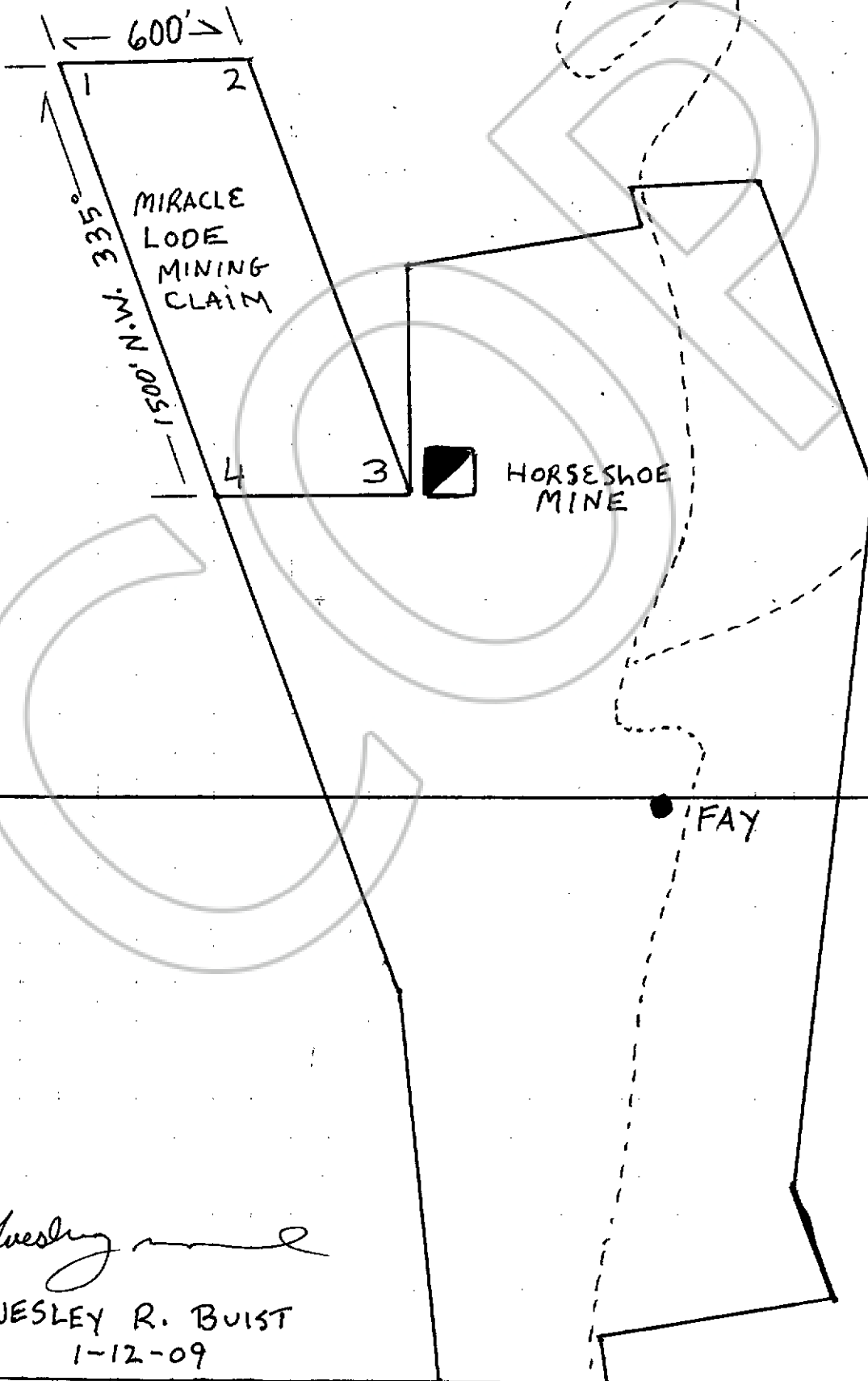
Recorded By: AE

Book- 247 Page- 0030



0133386

NOTE: MIRACLE LODGE MINING CLAIM  
 IS IN THE S.W. 1/4 SEC. OF  
 SECTION 30, T1N, R71E.  
 THE S.E. CORNER #3 IS 300'  
 WEST OF PATENTED HORSESHOE  
 MINE. END LINES 1, 2 AND 3, 4  
 RUN EAST TO WEST FOR 600'  
 SIDE LINES 1, 4 AND 2, 3 RUN  
 FROM THE SOUTH TO THE NORTHWEST  
 AT 335° FOR 1500'



*Wesley Buist*  
 WESLEY R. BUIST  
 1-12-09

MIRACLE LODGE  
 MAP  
 SCALE: 1" = 500'