

**LOCATION DATES:**

- October 21, 2008 BN 92-137
- October 22, 2008 BN 46-91
- October 24, 2008 BN 1-15
- October 25, 2008 BN 16-45
- October 27, 2008 BN 138-177
- October 28, 2008 BN 178-217
- October 29, 2008 BN 218-257
- October 30, 2008 BN 258-297

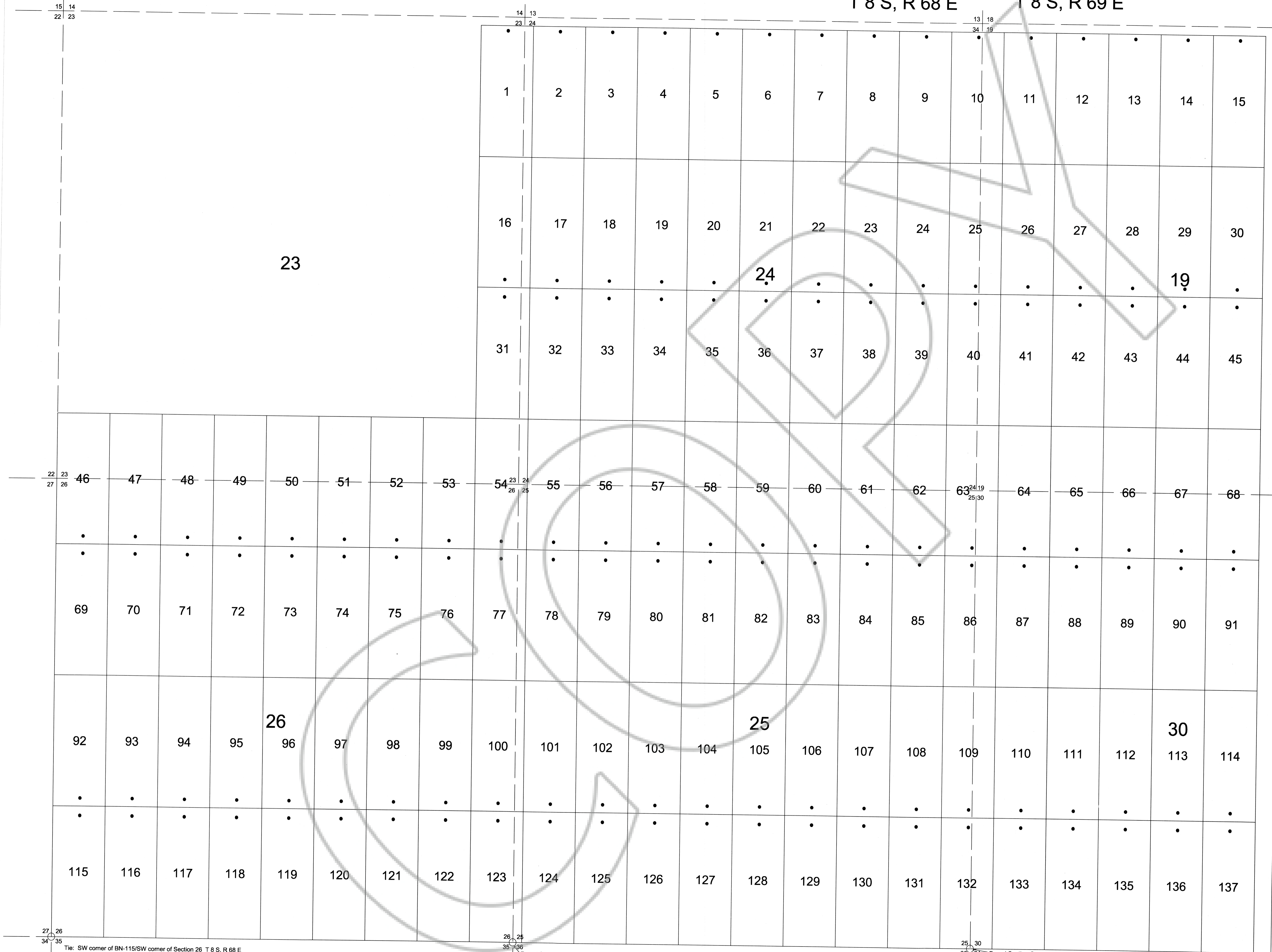
ALL CLAIMS ARE 600' WIDE X 1500' LONG UNLESS NOTED.  
 ALL LOCATION MONUMENTS ARE 5' IN FROM THE END CENTER UNLESS NOTED.  
 ALL LOCATION MONUMENTS AND CLAIM CORNERS ARE 2" X 2 X4" WOOD POSTS

**SILVER RESERVE CORP**  
 1135 TERMINAL WAY, SUITE 207B  
 RENO, NV 89502

**BN LODE MINING CLAIMS**  
 NUMBERS 1-297  
 T8S-R68E Sections 23, 24, 25 & 26  
 T8S-R69E Sections 19-21 & 28-33  
 LINCOLN COUNTY, NEVADA

T 8 S, R 68 E

T 8 S, R 69 E



T 8 S, R 68 E

T 8 S, R 69 E

Tie: SW corner of BN-115/SW corner of Section 26 T 8 S, R 68 E

Found Section Corner

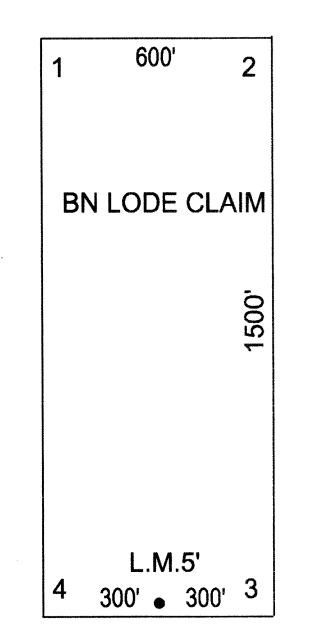
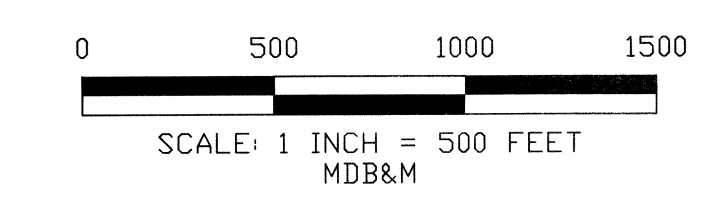
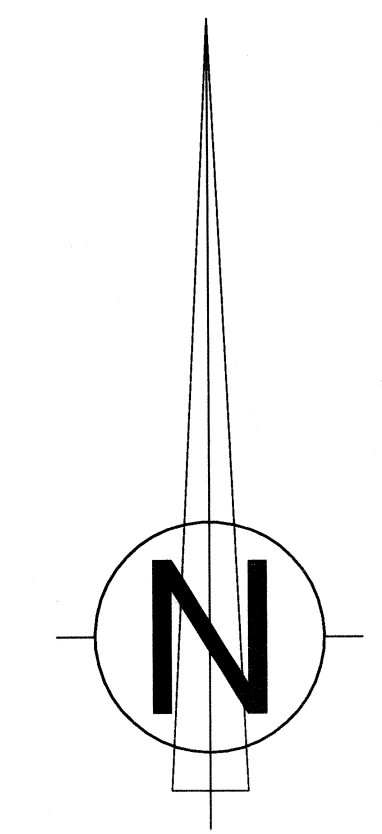
Found Section Corner



15	T8S R69E																			
30	19	20																21		
45	138	139	140	141	142	143	144	145	146	147	148	149	150	151	152	153	154	155	156	157
68	158	159	160	161	162	163	164	165	166	167	168	169	170	171	172	173	174	175	176	177
91	178	179	180	181	182	183	184	185	186	187	188	189	190	191	192	193	194	195	196	197
114	198	199	200	201	202	203	204	205	206	207	208	209	210	211	212	213	214	215	216	217
137	218	219	220	221	222	223	224	225	226	227	228	229	230	231	232	233	234	235	236	237
	31	32																33		

T8S R69E

T8S R69E



- LOCATION DATES:**
- October 21, 2008 BN 92-137
  - October 22, 2008 BN 46-91
  - October 24, 2008 BN 1-15
  - October 25, 2008 BN 16-45
  - October 27, 2008 BN 138-177
  - October 28, 2008 BN 178-217
  - October 29, 2008 BN 218-257
  - October 30, 2008 BN 258-297

Tie: Shown on Sheet 1. SW corner of BN 115 at the SW corner of Section 26 T8S-R68E

ALL CLAIMS ARE 600' WIDE X 1500' LONG UNLESS NOTED.  
 ALL LOCATION MONUMENTS ARE 5' IN FROM THE END CENTER UNLESS NOTED.  
 ALL LOCATION MONUMENTS AND CLAIM CORNERS ARE 2" X 2 X 4" WOOD POSTS

**SILVER RESERVE CORP**  
 1135 TERMINAL WAY, SUITE 207B  
 RENO, NV 89502

**BN LODGE MINING CLAIMS**  
 NUMBERS 1-297  
 T8S-R68E Sections 23, 24, 25 & 26  
 T8S-R69E Sections 19-21 & 28-33  
 LINCOLN COUNTY, NEVADA

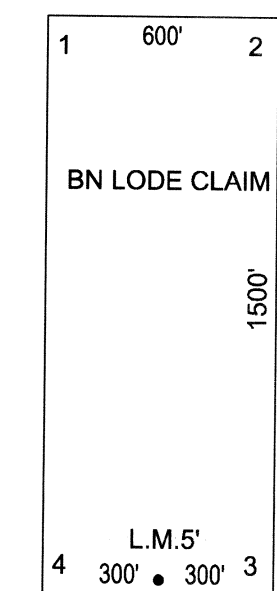
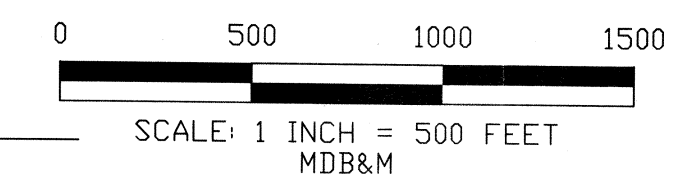
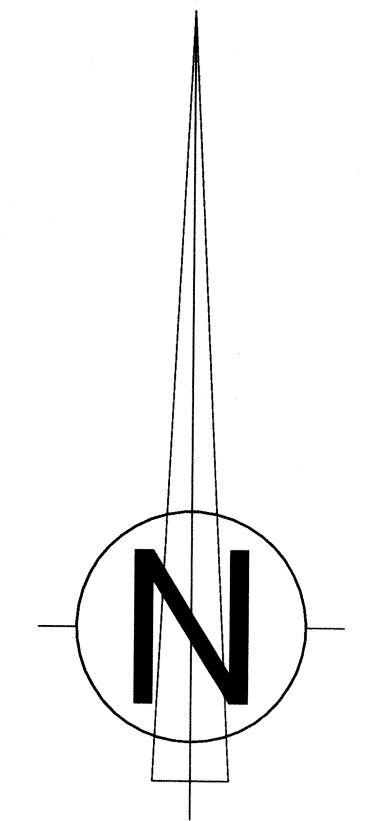


T8S R69E

112	113	114	198	199	200	201	202	203	204	205	206	207	208	209	210	211	212	213	214	215	216	217	
•	•	•																					
135	136	1	218	30 219	220	221	222	223	224	29 225	226	227	228	229	230	231	232	233	28 234	235	236	237	
			•	•	•	30 •	29 •	•	•	•	•	•	•	•	29 •	28 •	•	•	•	•	•	•	•
			•	•	•	31 •	32 •	•	•	•	•	•	•	•	•	32 •	33 •	•	•	•	•	•	•
			238	239	240	241	242	243	244	245	246	247	248	249	250	251	252	253	254	255	256	257	
				31 258	259	260	261	262	263	264	32 265	266	267	268	269	270	271	272	273	33 274	275	276	277
				•	•	•	•	•	•	•	•	•	•	•	•	•	•	•	•	•	•	•	•
				•	•	•	•	•	•	•	•	•	•	•	•	•	•	•	•	•	•	•	•
			278	279	280	281	282	283	284	285	286	287	288	289	290	291	292	293	294	295	296	297	

T8S R69E

T8S R69E



LOCATION DATES:

- October 21, 2008 BN 92-137
- October 22, 2008 BN 46-91
- October 24, 2008 BN 1-15
- October 25, 3008 BN 16-45
- October 27, 2008 BN 138-177
- October 28, 2008 BN 178-217
- October 29, 2008 BN 218-257
- October 30, 2008 BN 258-297

ALL CLAIMS ARE 600' WIDE X 1500' LONG UNLESS NOTED.  
 ALL LOCATION MONUMENTS ARE 5' IN FROM THE END CENTER UNLESS NOTED.  
 ALL LOCATION MONUMENTS AND CLAIM CORNERS ARE 2" X 2 X4" WOOD POSTS

SILVER RESERVE CORP  
 1135 TERMINAL WAY, SUITE 207B  
 RENO, NV 89502

BN LODGE MINING CLAIMS  
 NUMBERS 1-297  
 T8S-R68E Sections 23, 24, 25 & 26  
 T8S-R69E Sections 19-21 & 28-33  
 LINCOLN COUNTY, NEVADA