

# Map of the TUTMD Lode Claim

## TUTMD Lode Mining Claim

Located by: ELEMENTAL SOLUTIONS, LLC  
 3702 S. Virginia St. Suite G-12-401  
 Reno, Nevada 89502

Located in: SW 1/4 Sec. 2, T. 6N, R. 68E, MDBM  
 Atlanta Mining District, Lincoln County, Nevada

Located on: April 14th 2008

Claim is located such that 1000' are claimed in a N12°W (348°) direction and 500' are claimed in a S12°E (168°) direction from the location monument together with 300' on either side of the location monument and center line of the TUTMD Lode Claim.

All monuments are a minimum of 1.5" x 1.5" x 4" wood posts marked with scribed Aluminum tags.

From SW Cor. Sec. 2, T. 6N, R. 68E, MDBM it is 1590 feet on a bearing of 89.5 degrees to the SW corner of TUTMD Lode Claim.

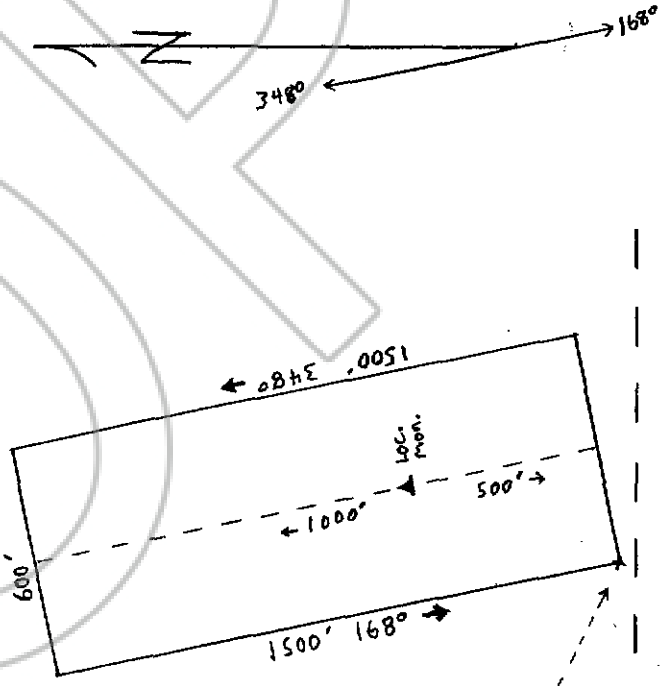
Tie Point

sec 3  
10  
sec 2  
11  
sec

T. 6N, R. 68E

Scale 1" = 500'

drawn by Tim Neal  
6-10-08



6-1 Tim Neal, agent



0132269