

Record of Survey

DOC # 0131707
 06/16/2008 10:45 AM
Official Record
 Recording Requested By
 LENARD SMITH
 Lincoln County - NV
 Leslie Boucher - Recorder
 Fee: \$21.00 Page: 1 of 1
 RPTT Recorded By: RE
 Book: C Page: 0400
 0131707

LEGEND

- ⊙ Set #5 rebar & plastic cap stamped L SMITH PLS 12751
- ⊙ Found #5 rebar & plastic cap stamped L SMITH PLS 12751
- ⊙ Found #5 rebar & plastic cap stamped OWENS PLS 2884
- Property line of occupation
- - - Corrected deed division lines
- x - x - Fence line
- +—+—+— Fence on property line of occupation
- ▨ Nevada Highway 322 pavement
- v — v — power line
- - - Property line of deed Bk. 15, Pg. 62 from corrected subdivision of the section
- (XXXX.XX) Parenthesis added to dimensions of corrected deed divisions

SURVEYOR'S CERTIFICATE

I, Lenard D. Smith, a Professional Land Surveyor licensed in the State of Nevada certify that:

- This plat represents the results of a survey conducted under my direct supervision at the instance of Ike Moses.
- The lands surveyed lie within Section 35, Township 2 North, Range 69 East, M.D.M. The survey was completed on 5/11/08.
- The monuments depicted on the plat are of the character shown, occupy the positions indicated, and are of sufficient number and durability.



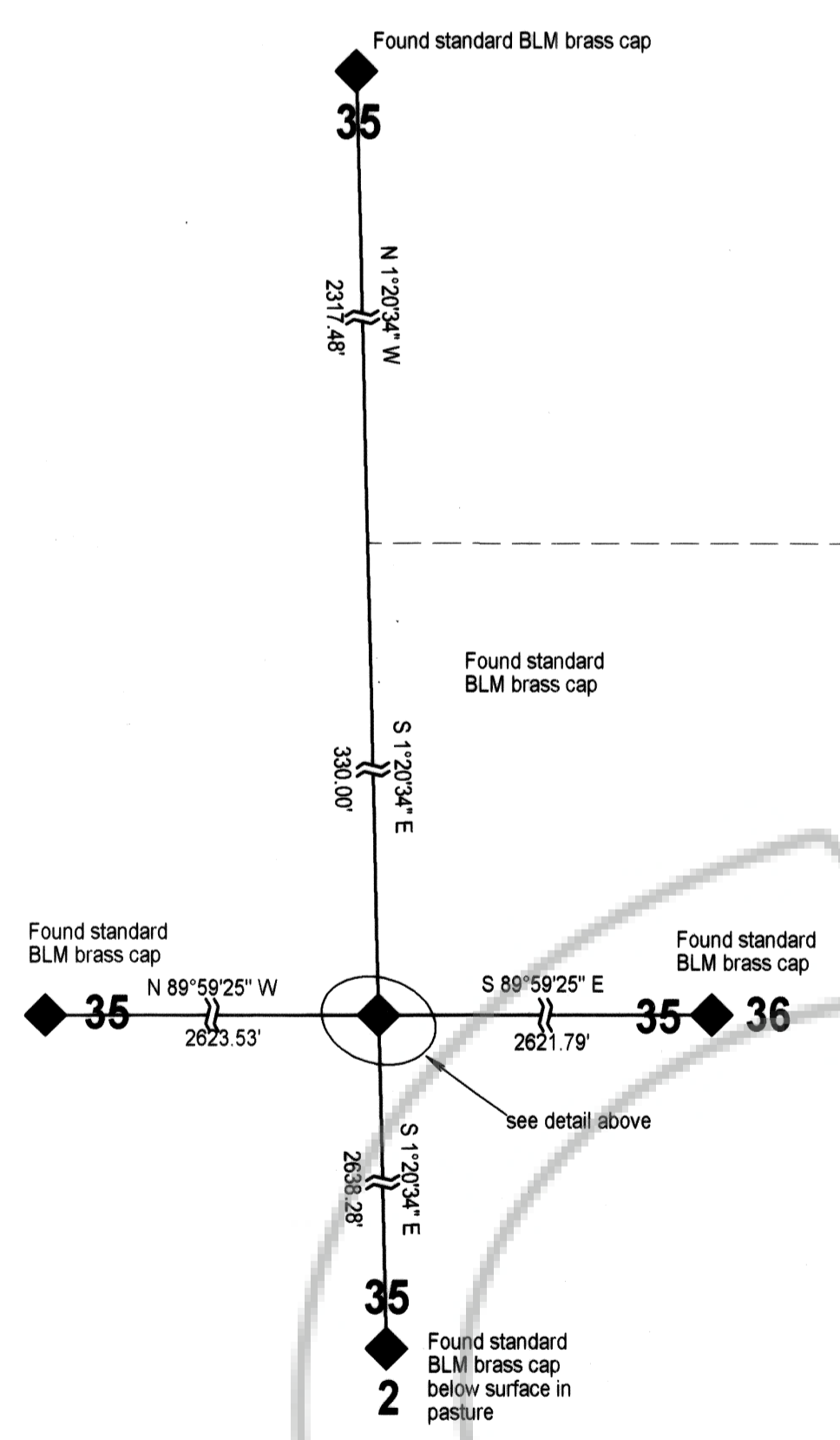
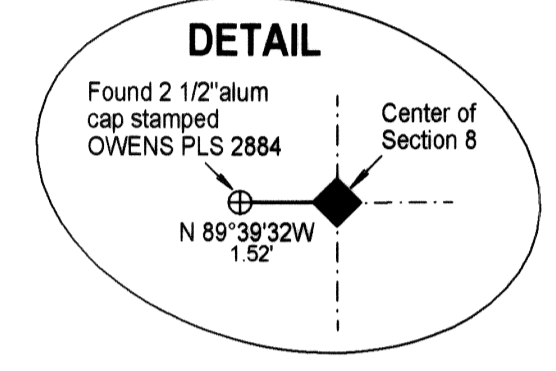
Lenard D. Smith PLS 12751, Exp. June 30, 2008

BASIS OF BEARING

The Basis of Bearings is that part of the Township line between Sections 2 and 35, T. 1 and 2 N. R. 69 E. between the southwest corner of Section 35 and the witness corner as given in the BLM Dependent Resurvey of 1974 and given as S 89° 55' E.

REFERENCES

- Record of Survey, Plat Book A, Page 102 by McNutt
- Record of Survey Plat Book A, Page 140 by Knowlton
- Record of Survey Plat Book A, Page 143 Amended by Knowlton
- Record of Survey Plat Book A, Page 183 by P. Hulse
- Record of Survey Plat Book A, Page 187 by P. Hulse (amended)
- Record of Survey Plat Book A, Page 190 by P. Hulse
- Parcel Map Plat Book A, Page 372 by F. Hulse
- Map of Reversion to Acreage Plat Book B, Page 409 by Owens
- Record of Survey, Boundary Line Adjustment, Plat Bk B Pg. 410 by Owens
- Record of Survey, Boundary Line Adjustment, Plat Book C, at Page 351 by L. Smith



MAP NOTES:

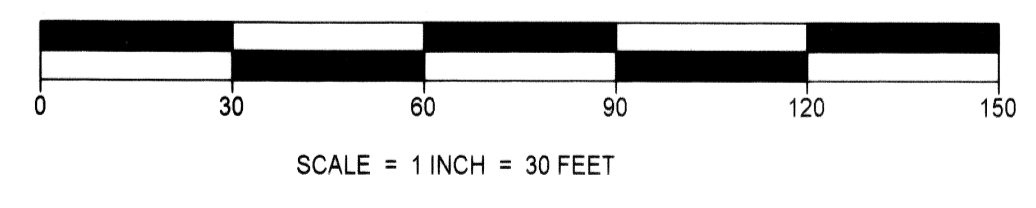
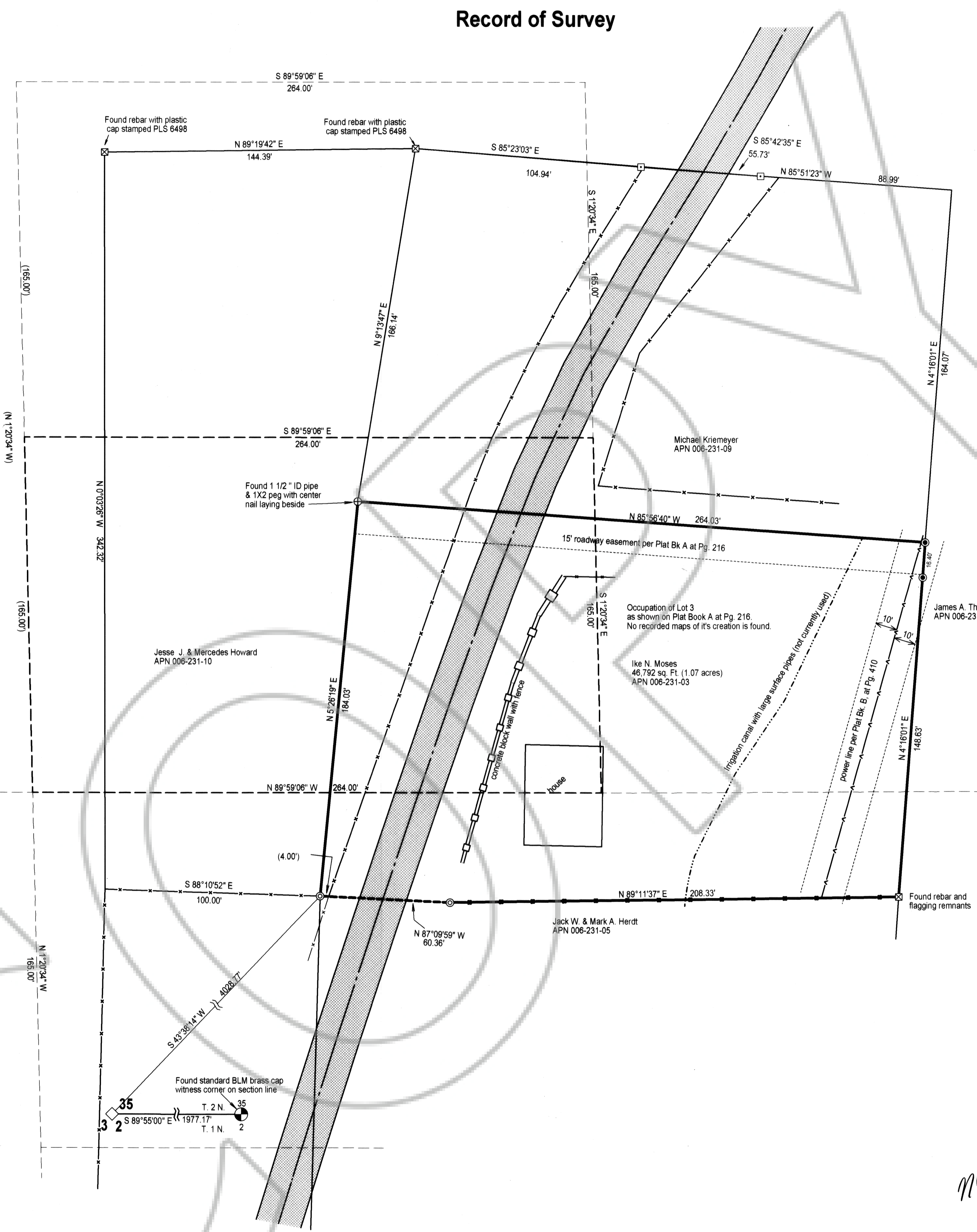
The original lots and parcels of the SW1/4NE1/4 of this Section 35 was subdivided incorrectly however shown herein as as continued occupation.

The heavy dark line shows occupation which conforms to the previous maps (see Maps Plat Book A, Page 216 and Plat Bk. B, Pg. 410) for Lot 3. It is apparent that Lots 1, 2 and 3 were established in 1970 when Lot 1 was sold. There are no maps recorded establishing these lots.

The light medium dashed lines show the property locations as given by the deed according to a correct subdivision of Section 35.

The darker medium dashed lines show the correct location described in the deed (Bk. 15 at Pg. 062) for the Moses property.

The names of occupants on the map are placed in the areas occupation.



Record of Survey of Occupation
 For
Ike N. Moses

In Section 35, Township 2 North, Range 69 East, Mount Diablo Meridian,
 Lincoln County, Nevada

Lenard Smith Land Survey
 509 Main Street
 P.O. Box 443
 Caliente, Nevada 89008
 Phone/Fax 775 726 3365
 Cell Phone 775 962 1196