

CV 205	CV 206	CV 207	CV 208	CV 209	CV 210
CV 211	CV 213	CV 215	CV 217	CV 219	CV 221
CV 212	CV 214	CV 216	CV 218	CV 220	CV 222
CV 223	CV 225	CV 227	CV 229	CV 231	CV 233
CV 224	CV 226	CV 228	CV 230	CV 232	CV 234

TIE POINT:
 The SW corner of CV 224 is approximately 12,026 feet south and 7765 feet west of the SW corner of Section 36, T6N, R63E, M.D.M.

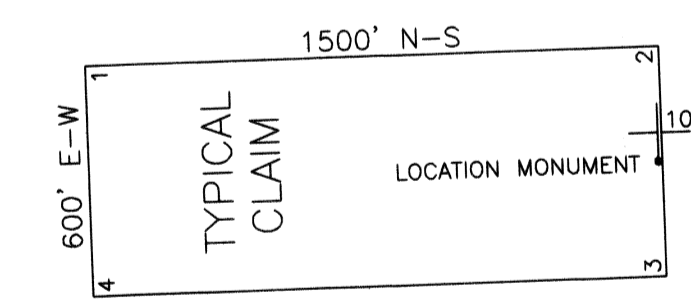
LODE CLAIM MAP
CV 205-234
 T5N, R63E, M.D.M.
 LINCOLN COUNTY, NEVADA

Locator:
NEVORO NEVADA INC.
 1201 TERMINAL, #221
 RENO, NEVADA 89502

Drawn By: ARD FEBRUARY 2008 SHEET 1 OF 1

Survey and Map by:
 MINERAL EXPLORATION SERVICES LLC
 5655 REGGINS COURT, SUITE 100, RENO, NEVADA 89502
 (775) 954-1082 Fax: (775) 925-6882

DOC # 0131193
 Official Record
 Recorder: Leslie Boucher
 Fee: \$454.00
 Book: 240 Page: 0164
 0131193



0 500 1000
 SCALE
 U.S. Survey Foot
 Sections projected using
 Nevada BLM GCDB

CLAIM LOCATION DATES:
 January 14, 2008: CV 205-234

ALL CLAIMS ARE 1500' x 600' UNLESS OTHERWISE NOTED.
 ALL MONUMENTS ARE 2' x 2' x 4' WOODEN POSTS.
 LOCATION MONUMENTS ARE SET 10' INSIDE CLAIM BOUNDARY UNLESS OTHERWISE NOTED.