

T01SR67E

T01SR68E

ANCHOR 5

The Location Monument of Anchor 5 bears S30°E and is 100' from the NW corner of Anchor 5.

12

7

11

The Location Monument of ANCHOR LINK 3 bears N36°20'E and is 257' from the NW corner of ANCHOR LINK 3.

ANCHOR LINK 3

The Location Monument of ANCHOR 1 bears S84°8'E and is 613' from the NW corner of ANCHOR 1.

ANCHOR 1

13

14

18

The Location Monument of R&H #2 bears S85°05'W and is 1273' from the NE corner of R&H #2.

R&H #2

The Location Monument of POZZOLAN 7 bears W and is 10' from the NE corner of POZZOLAN 7.

POZZOLAN 7

POZZOLAN 9

The Location Monument of POZZOLAN 9 bears W and is 10' from the NE corner of POZZOLAN 9.

24

The Location Monument of R&H 1 bears S67°21'W and is 1617' from the NE corner of R&H 1.

R&H 1

23

The claims were originally located on the following dates:

Anchor 1, 4, 5 & 6 were located on July 31, 2003
Anchor Link 3 was located on July 31, 2003
Chain 4 was located on May 22, 2006
Pozzolan 7 & 9 were located on May 16, 2000
R&H 1 & 2 were located on July 31, 2003
and Shamrock Cork 23 was located on May 23, 2006

The date of amended location for all claims is November 28, 2007
This amended location map is intended to properly depict the placer claims as shown so that they mirror the amended certificates of location.

The claims as amended are in the following sections:
Sections 12-14, 23-26, 28, 33 and 36 in Township 1 South, Range 67 East and in Section 1 Township 2 South Range 67 East and in Section 18 Township 1 South Range 68 East in Lincoln County, Nevada

Amended Claim Location Map for Anchor 1, 4, 5 & 6, Anchor Link 3, Chain 4, Pozzolan 7 & 9, R&H 1 & 2 and Shamrock Cork 23

Sheet 1 of 3

Sheet 1 of 3

Sheet 2 of 3

Sheet 3 of 3

Notes:
Location Monuments are set along the northern boundary of the claims as noted. All location monuments are 2" X 2" X 4' wooden posts notated with black marker and a document container is buried at the base on the East side. All claims are taken by legal subdivision. All bearings based on UTM North.

Amended Location By:
Nicholas A. Smith
Agent for Shamrock Pozzolan, LLC
1412 West State Street
Pleasant Grove, Utah
84062

Location monument
TYPICAL CLAIM
Taken by legal subdivision - description

DOC # 0130692
OFFICIAL RECORD
Lincoln County - NV
Leslie Boucher - Recorder
Book-238 Page- 012



Scale 1:6000
1" = 600'
FEET

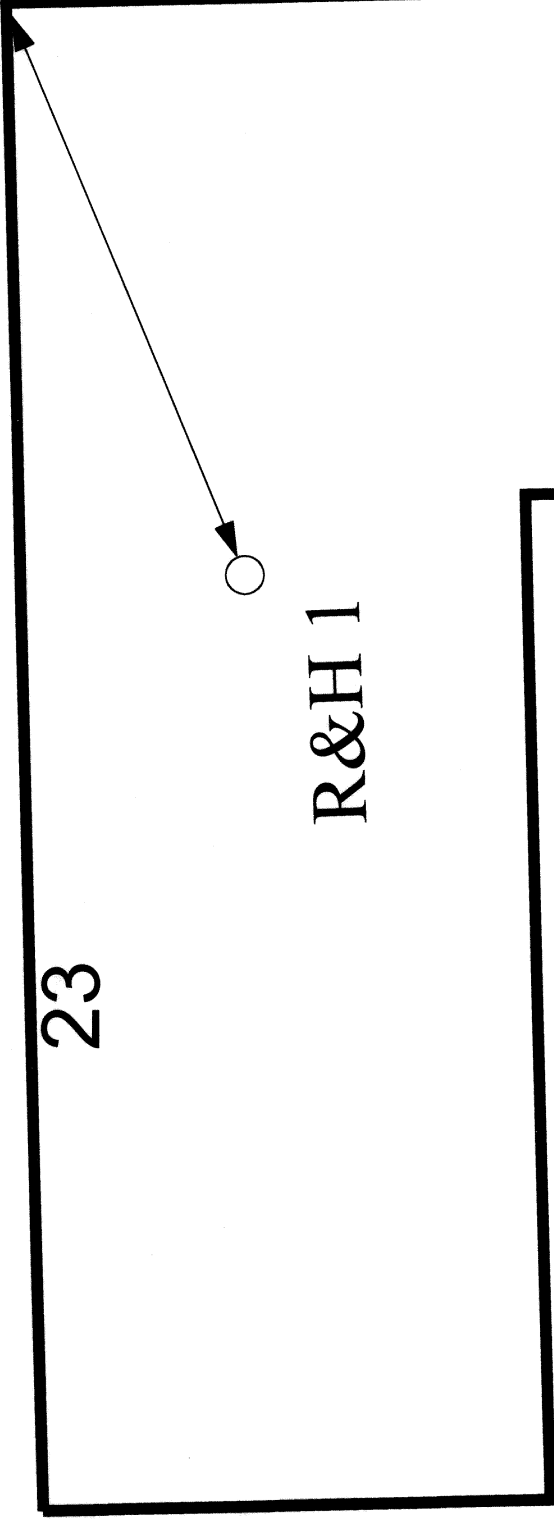
Amended Placer Claim Location Map for Anchor 1, 4, 5 & 6, Anchor Link 3, Chain 4, Pozzolan 7 & 9, R&H 1 & 2 and Shamrock Cork 23

Nicholas A. Smith
1412 West State Street
Pleasant Grove, Utah 84062
Pozzolan_Claims_Amended_UTM_Feet.dwg
November 23, 2007
Drawn By: G.I.S. Land Services
Field work by Nicholas A. Smith
Datum: 1927 Projection: UTM Zone 11
Units: Feet

POZZOLAN 9

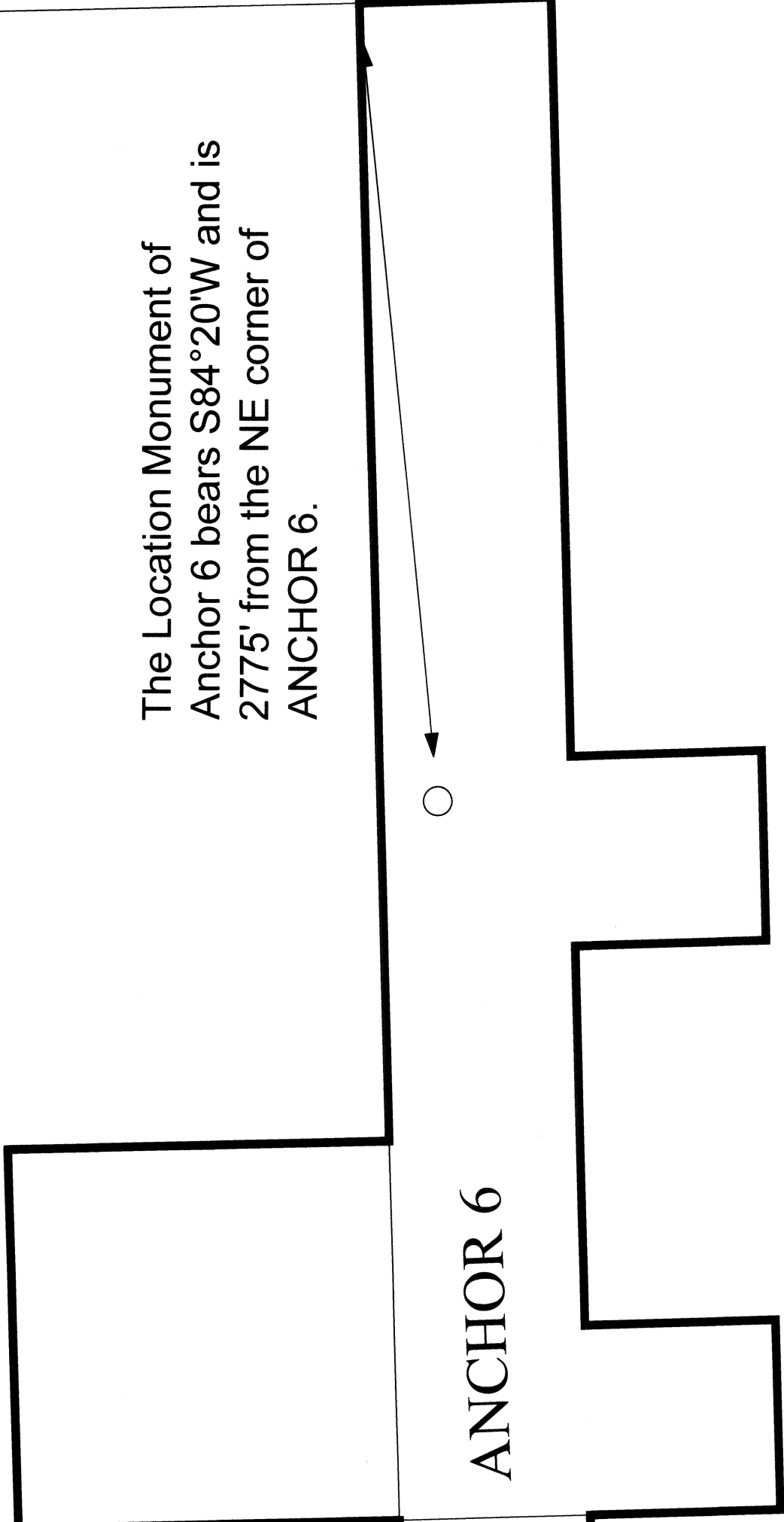
24

The Location Monument of R&H 1 bears S67°21'W and is 1617' from the NE corner of R&H 1.



R&H 1

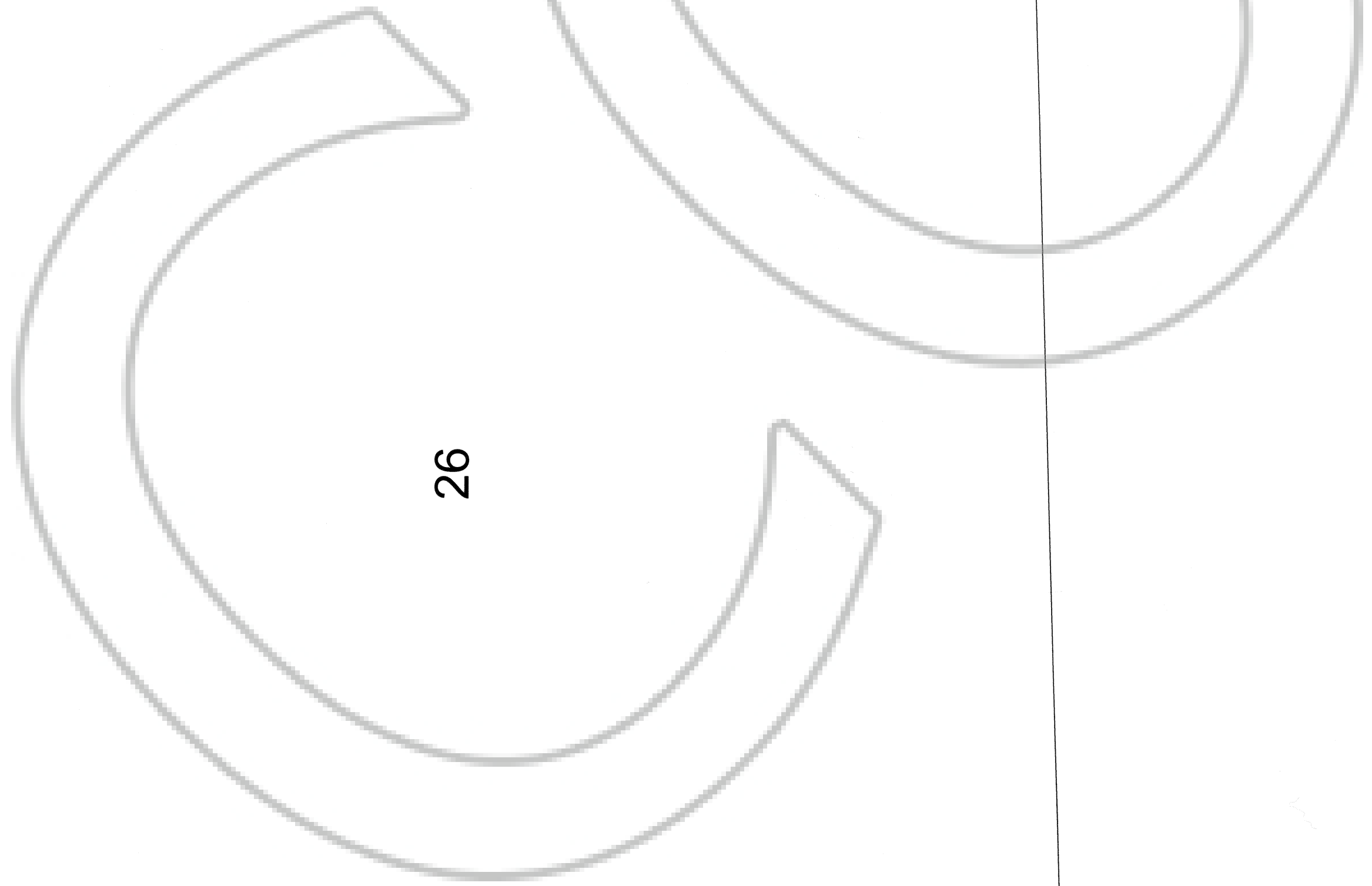
The Location Monument of Anchor 6 bears S84°20'W and is 2775' from the NE corner of ANCHOR 6.



ANCHOR 6

25

26



The Location Monument of ANCHOR 4 bears S10°21'W and is 363' from the NE corner of ANCHOR 4.



ANCHOR 4

36

35

T01SR67E

T01SR68E

T02SR67E

T02SR68E

1

2

The claims were originally located on the following dates:

Anchor 1, 4, 5 & 6 were located on July 31, 2003
Anchor Link 3 was located on May 22, 2006
Chain 4 was located on July 31, 2003
Pozzolan 7 & 9 were located on May 16, 2000
R&H 1 & 2 were located on July 31, 2005
and Shamrock Cork 23 was located on May 23, 2006

The date of amended location for all claims is November 28, 2007
This amended location map is intended to properly depict the placer claims as shown so that they mirror the amended certificates of location.

The claims as amended are in the following sections.
Sections 12-14, 25-26, 28, 33 and 36 in Township 1 South, Range 67 East and in Section 1 Township 2 South Range 67 East and in Section 18 Township 1 South Range 68 East in Lincoln County, Nevada

Amended Claim Location Map for Anchor 1, 4, 5 & 6, Anchor Link 3, Chain 4, Pozzolan 7 & 9, R&H 1 & 2 and Shamrock Cork 23

Sheet 2 of 3

Sheet 1 of 3

Sheet 3 of 3

Sheet 2 of 3

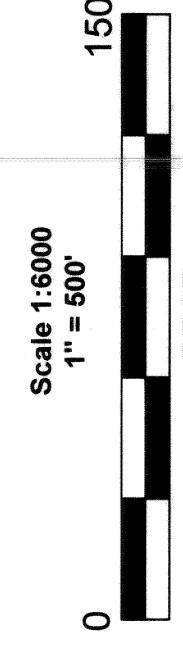
0130692 Book 005 12/14/2007 Page 113 Page 1203

UTM North

Location monument
TYPICAL CLAIM
Taken by legal subdivision description

Notes:
Location Monuments are set along the northern boundary of the claims as noted. All location monuments are 2" X 2" X 4' wooden posts notated with black marker and a document container is buried at the base on the East side. All claims are taken by legal subdivision. All bearings based on UTM North.

Amended Location By:
Nicholas A. Smith
Agent for Shamrock Pozzolan, LLC
1412 West State Street
Pleasant Grove, Utah
84062



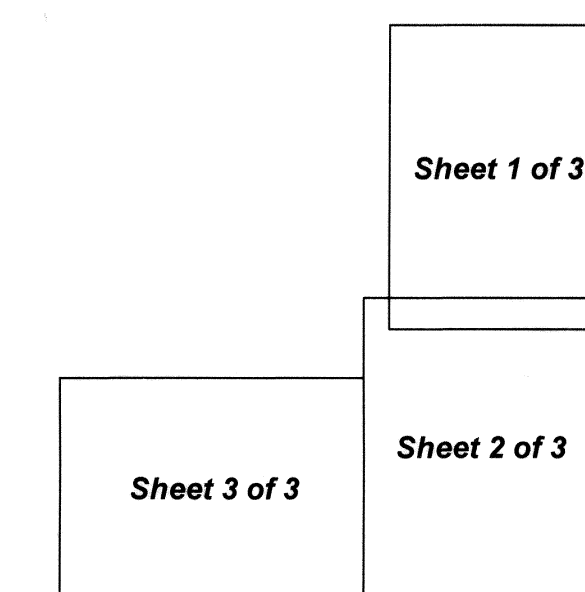
Amended Placer Claim Location Map for Anchor 1, 4, 5 & 6, Anchor Link 3, Chain 4, Pozzolan 7 & 9, R&H 1 & 2 and Shamrock Cork 23
Nicholas A. Smith
1412 West State Street
Pleasant Grove, Utah 84062
Pozzolan_Claims_Amended_UTM_Feet.dwg
November 23, 2007
Drawn By: G.I.S. Land Services
Field work by: Nicholas A. Smith
Datum: 1927 Projection: UTM Zone 11
Units: Feet

**Amended Claim
Location Map for
Anchor 1, 4, 5 & 6,
Anchor Link 3, Chain
4, Pozzolan 7 & 9,
R&H 1 & 2 and
Shamrock Cork 23
Sheet 3 of 3**

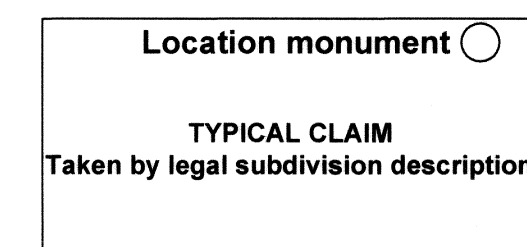
The claims were originally located on the following dates: Anchor 1, 4, 5 & 6 were located on July 31, 2003
Anchor Link 3 was located on May 22, 2006
Chain 4 was located on July 31, 2003
Pozzolan 7 & 9 were located on May 16, 2000
R&H 1 & 2 were located on July 31, 2003
and Shamrock Cork 23 was located on May 23, 2006

The date of amended location for all claims is November 28, 2007
This amended location map is intended to properly depict the placer claims as shown so that they mirror the amended certificates of location.

The claims as amended are in the following sections.
Sections 12-14, 23-26, 28, 33 and 36 in Township 1 South, Range 67 East and in Section 1 Township 2 South Range 67 East and in Section 18 Township 1 South Range 68 East in Lincoln County, Nevada

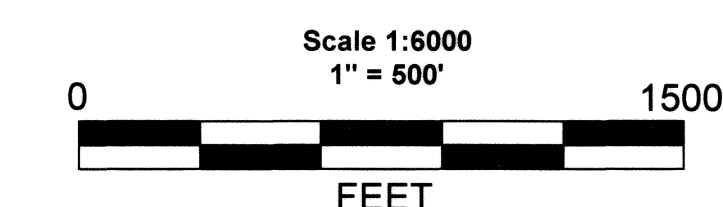


0138692 Book 236 12/14/2007
Page 114 Page 3 of 3



Amended Location By:
Nicholas A. Smith
Agent for Shamrock Pozzolan, LLC
1412 West State Street
Pleasant Grove, Utah
84062

Notes:
Location Monuments are set along the northern boundary of the claims as noted. All location monuments are 2" X 2" X 4' wooden posts notated with black marker and a document container is buried at the base on the East side. All claims are taken by legal subdivision. All bearings based on UTM North.



UTM North

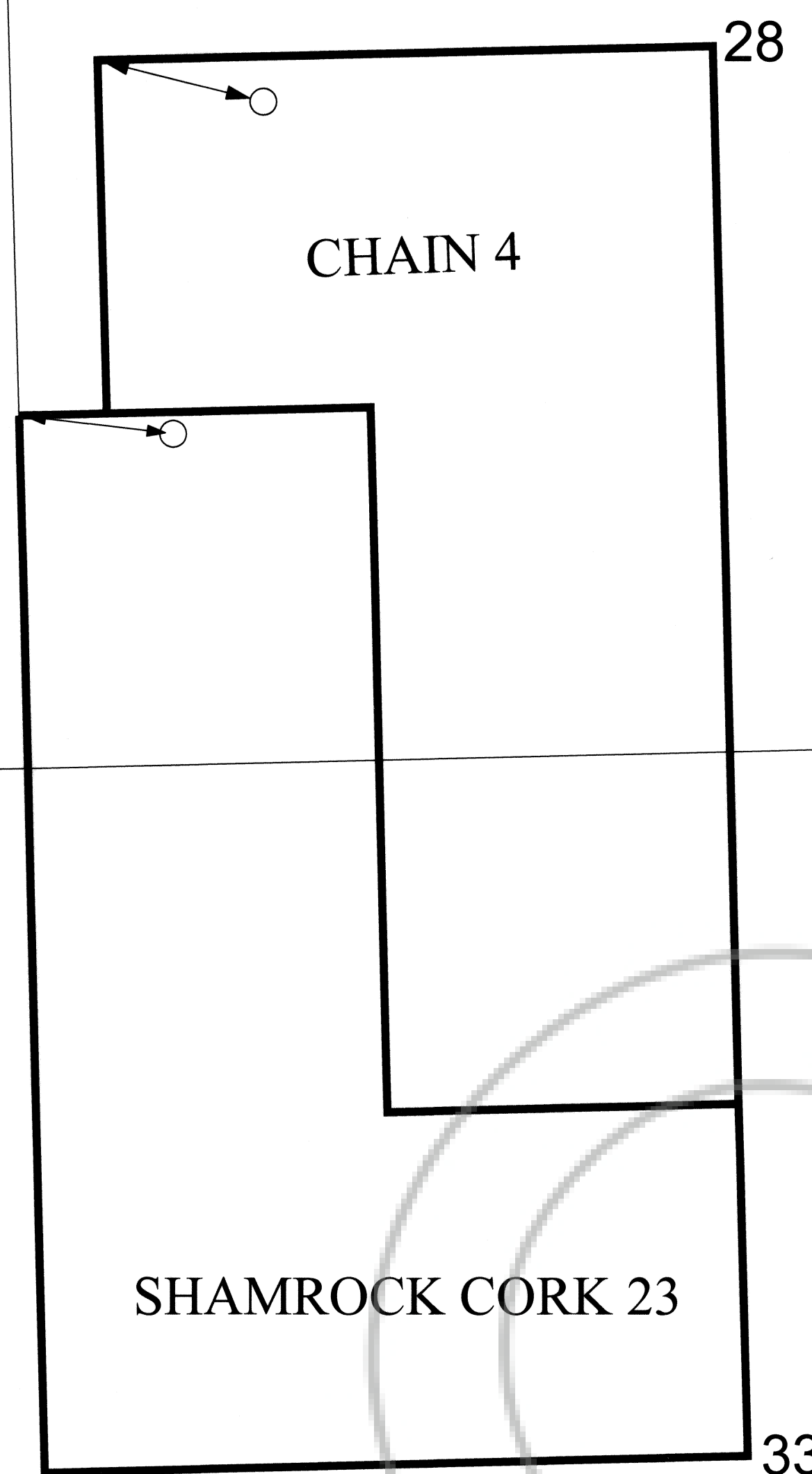
Amended Placer Claim Location Map for Anchor 1, 4, 5 & 6, Anchor Link 3, Chain 4, Pozzolan 7 & 9, R&H 1 & 2 and Shamrock Cork 23

Nicholas A. Smith
1412 West State Street
Pleasant Grove, Utah 84062

Pozzolan_Claims_Amended_UTM_Feet.dwg
November 23, 2007
Drawn By: G.I.S. Land Services
Field work by Nicholas A. Smith
Datum: 1927 Projection: UTM Zone 11
Units: Feet

The Location Monument of Chain 4 bears S76°01'E and is 642' from the NW corner of Chain 4.

The Location Monument of SHAMROCK CORK 23 bears S83°20'E and is 582' from the NW corner of SHAMROCK CORK 23.



29

27

32

34

28

33

T01SR67E

T02SR67E