

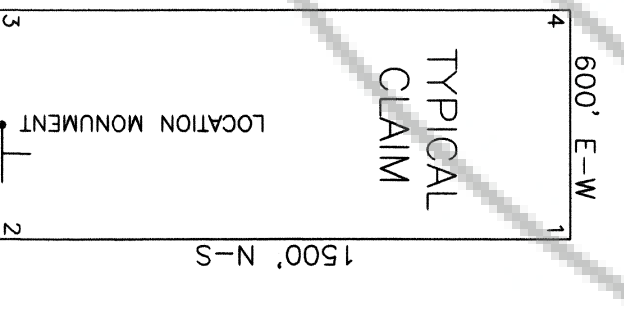
T3N 8 9 10

R65E

RS 1	RS 3	RS 5	RS 7	RS 9	RS 11	RS 13	RS 15	RS 17	RS 19	RS 21	RS 23	RS 25
RS 2	RS 4	RS 6	RS 8	RS 10	RS 12	RS 14	RS 16	RS 18	RS 20	RS 22	RS 24	RS 26
RS 27	RS 29	RS 31	RS 33	RS 35	RS 37	RS 39	RS 41	RS 43	RS 45	RS 47	RS 49	RS 51
RS 28	RS 30	RS 32	RS 34	RS 36	RS 38	RS 40	RS 42	RS 44	RS 46	RS 48	RS 50	RS 52
RS 53	RS 55	RS 57	RS 59	RS 61	RS 63	RS 65	RS 67	RS 69	RS 71	RS 73	RS 75	RS 77
RS 54	RS 56	RS 58	RS 60	RS 62	RS 64	RS 66	RS 68	RS 70	RS 72	RS 74	RS 76	RS 78

29

28



CLAIM LOCATION DATES:
 September 3, 2007: RS 1-77
 September 4, 2007: RS 78-127

ALL CLAIMS ARE 1500' x 600'
 UNLESS OTHERWISE NOTED.
 ALL MONUMENTS ARE 2" x 2"
 X-SECTION MONUMENTS ARE SET
 10' INSIDE CLAIM BOUNDARY
 UNLESS OTHERWISE NOTED

LODE MINING CLAIM MAP

RS 1-127

73N, R65E, M.D.M.
 LINCOLN COUNTY, NEVADA

GEONFORMATICS ALASKA EXPLORATION, INC.
 3730 E. Idaho Street
 Box 122
 Elko, Nevada 89801

Drawn By: ARD NOVEMBER 2007 SHEET 1 OF 2

DOC # 0130610

OFFICIAL RECORD
 Recording from the State of Nevada
 Lincoln County - Recorder
 Leslie Boucher
 Phone: 515-989-8800 Page: 1 of 2
 Book - 237 Page - 0807



0130610



0 500 1000

SCALE

U.S. Survey Foot
 Sections projected using
 Nevada BLM GCD8

T3N

22

23

24

R65E

RS 78	RS 80	RS 82	RS 84	RS 86	RS 88	RS 90	RS 92	RS 94	RS 96
RS 79	RS 81	RS 83	RS 85	RS 87	RS 89	RS 91	RS 93	RS 95	RS 97
RS 98	RS 100	RS 102	RS 104	RS 106	RS 108	RS 110	RS 112	RS 114	RS 116
RS 99	RS 101	RS 103	RS 105	RS 107	RS 109	RS 111	RS 113	RS 115	RS 117
RS 118	RS 119	RS 120	RS 121	RS 122	RS 123	RS 124	RS 125	RS 126	RS 127

27

25

34

35

36

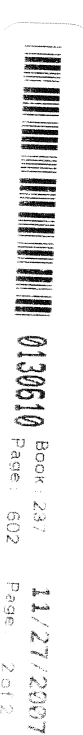


0 500 1000

SCALE

U.S. Survey Foot

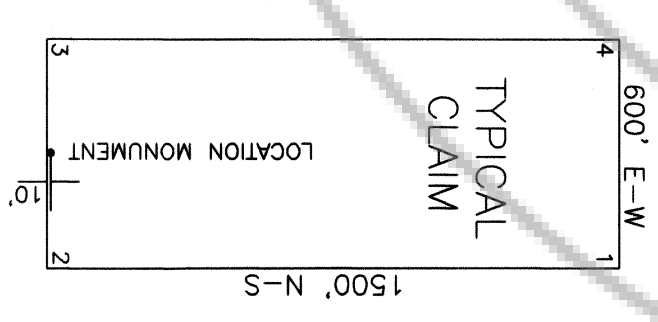
Sections projected using Nevada BLM GCS



TIE POINTS:
 The NE corner of RS 52 is approximately 3787 feet north and 814 feet west of the SE corner of Tract 37, Section 21, T3N, R65E, M.D.M. (marked by USGS brass cap).
 The NW corner of RS 78 is approximately 1275 feet north and 7640 feet east of the SE corner of Tract 37, Section 21, T3N, R65E, M.D.M. (marked by USGS brass cap).

CLAIM LOCATION DATES:
 September 3, 2007: RS 1-77
 September 4, 2007: RS 78-127

ALL CLAIMS ARE 1500' x 600'
 UNLESS OTHERWISE NOTED
 ALL MONUMENTS ARE NOTED
 X 4" WOODEN POSTS
 LOCATION MONUMENTS ARE SET
 10' INSIDE CLAIM BOUNDARY
 UNLESS OTHERWISE NOTED



LODE MINING CLAIM MAP

RS 1-127

T3N, R65E, M.D.M.
 LINCOLN COUNTY, NEVADA

Locator:
 GEONFORMATICS ALASKA EXPLORATION, INC.

3730 E. Idaho Street
 Box 122
 Elko, Nevada 89801

Drawn By: ARD

NOVEMBER 2007

SHEET 2 OF 2