

4

3

T5N 2

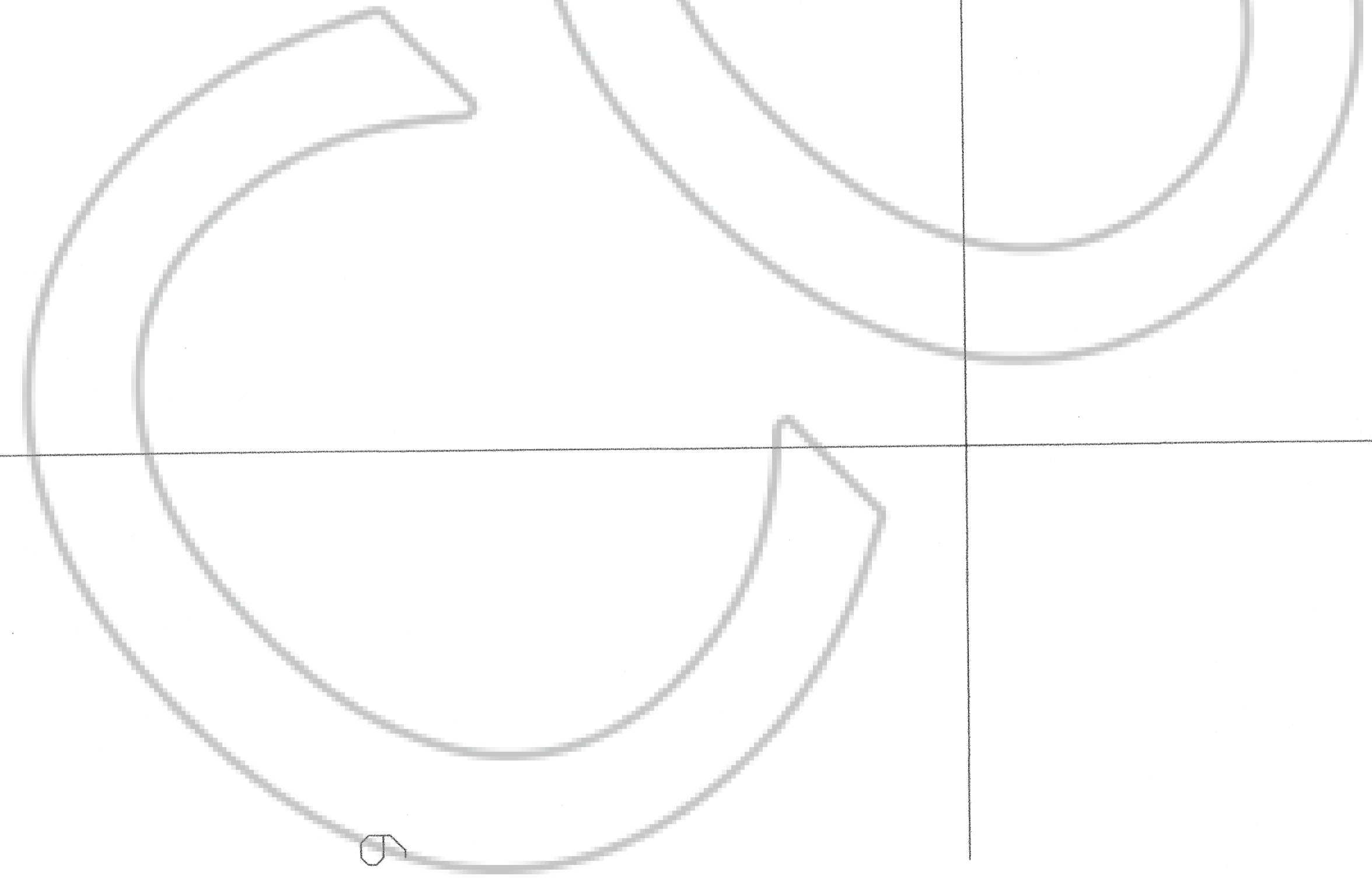
R63E

CV 185	CV 186	CV 187	CV 188
CV 189	CV 191	CV 193	CV 195
CV 190	CV 192	CV 194	CV 196
CV 197	CV 199	CV 201	CV 203
CV 198	CV 200	CV 202	CV 204

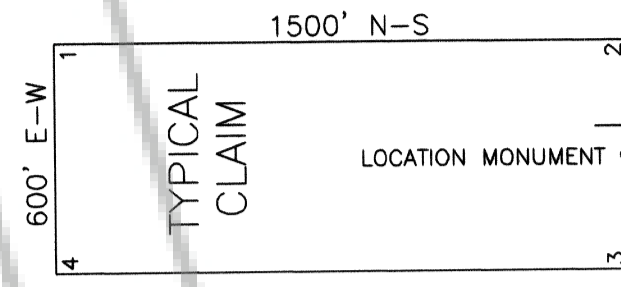
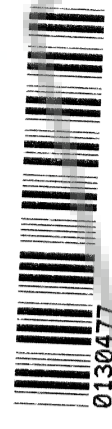
11

16

14



11/21/2007 03:50 PM
DOC # 0130477
Official Record
 NEVADA
 Lincoln County - NV
 Lee Boucher - Recorder
 Fee \$384.00
 Book-227 Page- 0229



ALL CLAIMS ARE 1500' X 600' UNLESS OTHERWISE NOTED.
 ALL MONUMENTS ARE 2" X 2" X 4" WOODEN POSTS.
 LOCATION MONUMENTS ARE SET 10' INSIDE CLAIM BOUNDARY UNLESS OTHERWISE NOTED

TIE POINT:

The SE corner of CV 204 is approximately 12,026 feet south and 7765 feet west of the SW corner of Section 36, T6N, R63E, M.D.M.

22



0 500 1000
 SCALE

U.S. Survey Foot
 Sections projected using
 Nevada BLM GCDB

LODE CLAIM MAP
CV 185-204

T5N, R63E, M.D.M.
 LINCOLN COUNTY, NEVADA

Locator:
 NEVORO NEVADA INC.
 1201 TERMINAL, #221
 RENO, NEVADA 89502

Drawn By: ARJ | NOVEMBER 2007 | SHEET 1 OF 1

Survey and Map by:
 MINERAL EXPLORATION SERVICES LLC
 5455 BUCKINGHAM COURT, SUITE 15, RENO, NEVADA 89502
 (775) 954-1082 fax: (775) 829-6882

CLAIM LOCATION DATES:
 September 29, 2007: CV 197-204
 September 30, 2007: CV 185-196