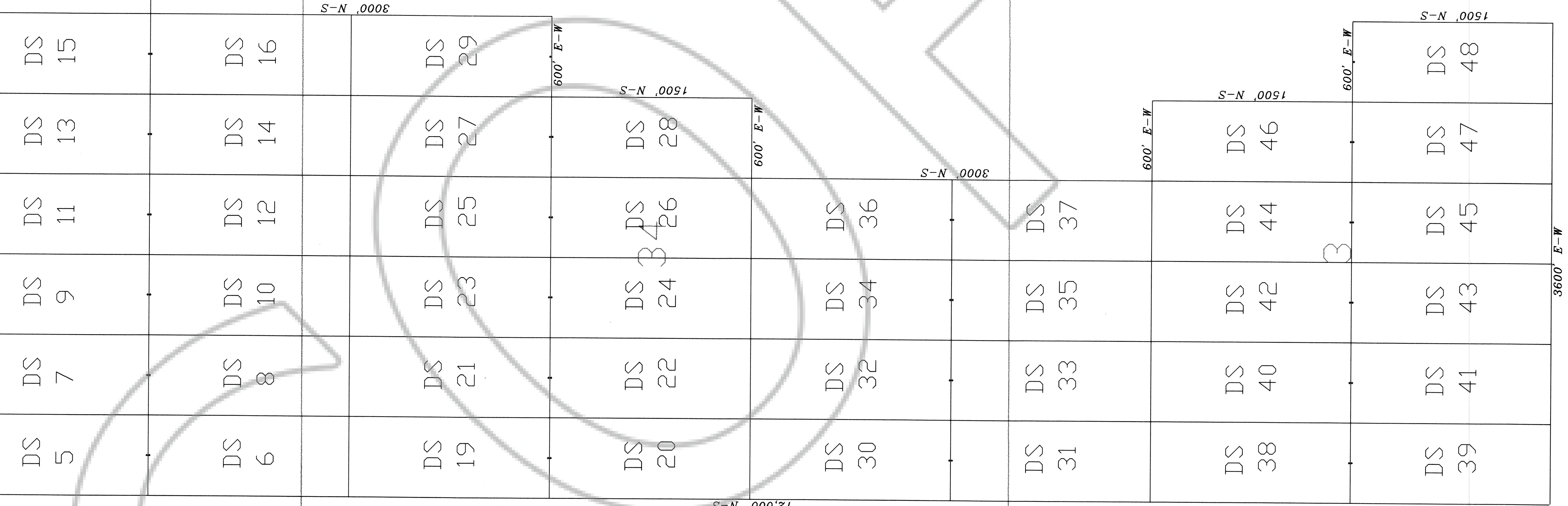
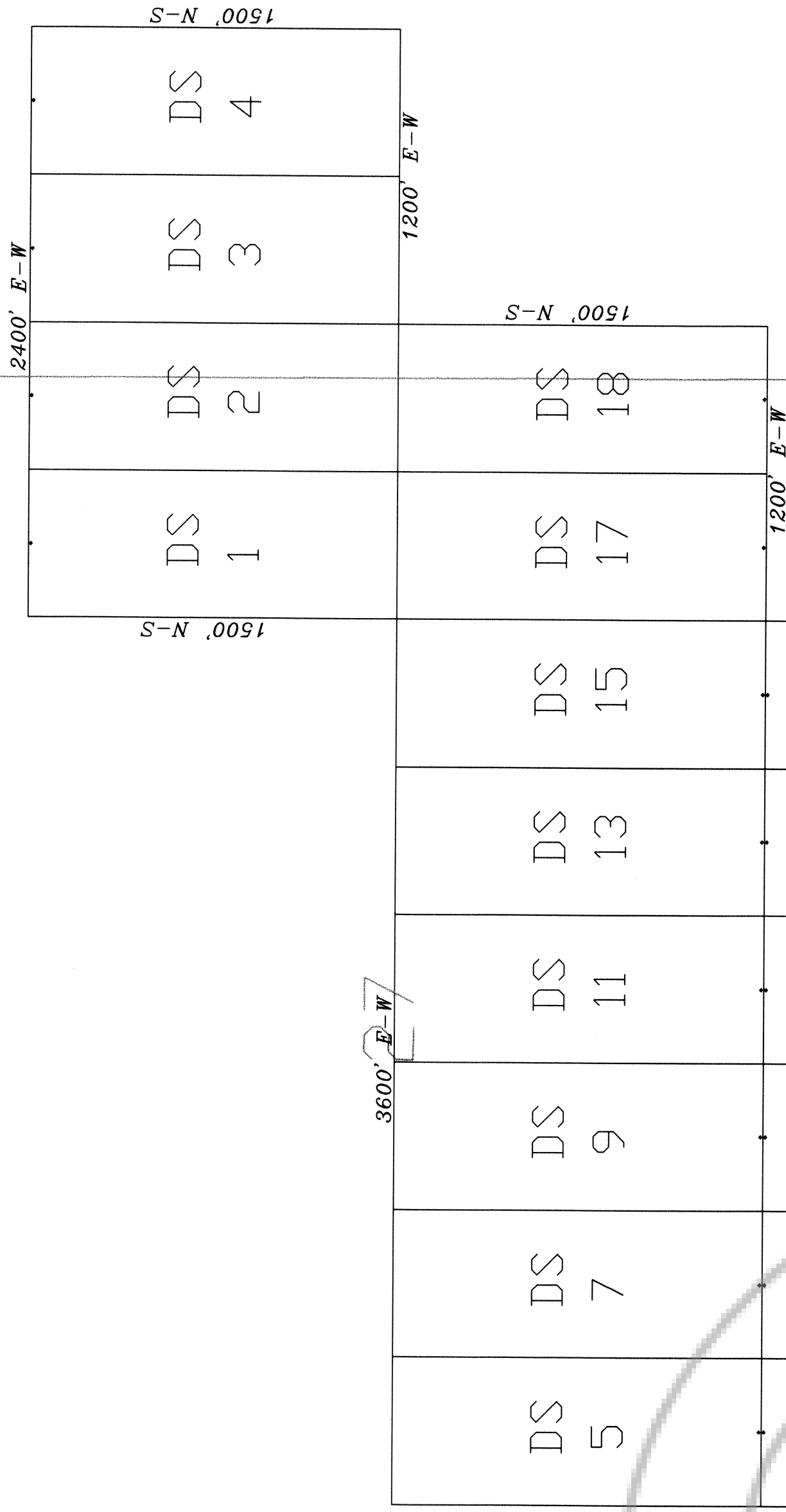


R63E

28

3600' E-W

26

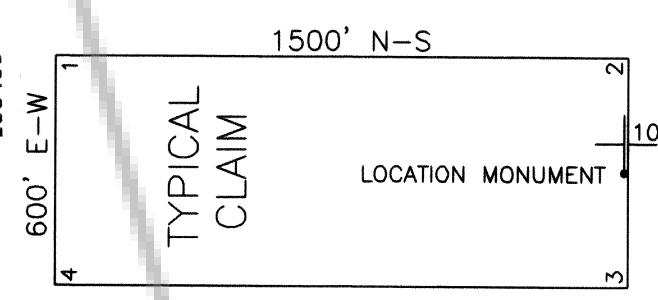
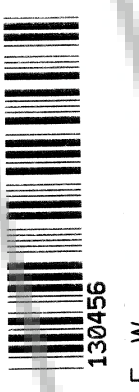


35

33

T5N
T4N

DOC # 130456
 Official Record
 Lincoln County - NV
 Leslie Boucher - Recorder
 Book - 237 Page - 042E



ALL CLAIMS ARE 1500' x 600' UNLESS OTHERWISE NOTED.
 ALL MONUMENTS ARE 2" x 2" x 4" WOODEN POSTS.
 LOCATION MONUMENTS ARE SET 10' INSIDE CLAIM BOUNDARY UNLESS OTHERWISE NOTED

TIE POINT:

The NE corner of DS 1 is approximately 21,026 feet south and 7765 feet west of the SW corner of Section 36, T6N, R63E, M.D.M.



0 500 1000
 SCALE
 U.S. Survey Foot

Sections projected using
 Nevada BLM GCDB

LODE MINING CLAIM MAP
DS 1-48
 T4-5N, R63E, M.D.M.
 LINCOLN COUNTY, NEVADA

Locator:
 NEVORO NEVADA INC.
 1201 TERMINAL, #221
 RENO, NEVADA 89502

Drawn By: ARD NOVEMBER, 2007 SHEET 1 OF 1
 Survey and Map by:
 MINERAL EXPLORATION SERVICES, LLC
 5655 RIEGELIN COURT, SUITE 15, RENO, NEVADA 89502
 (775) 954-1082 fax: (775) 825-6882

CLAIM LOCATION DATES:
 September 30, 2007: DS 1-17, 19-37
 October 1, 2007: DS 18, 38-48

4