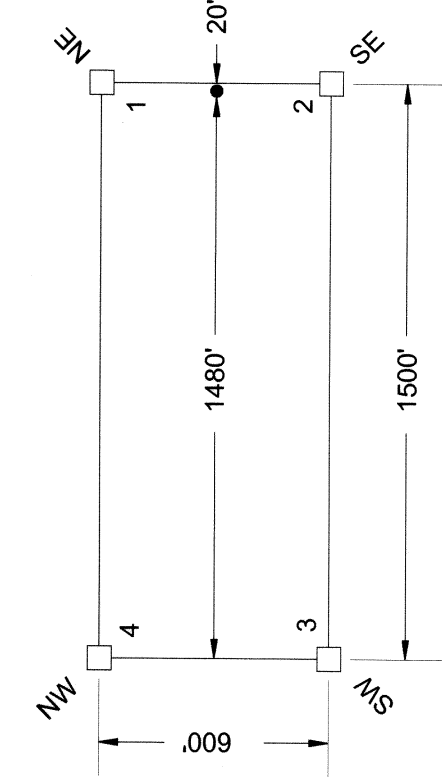


**TYPICAL CLAIMS**



LOCATION DATES: SEPTEMBER 7, 2007

NOTES:  
TIE POINT: FROM THE SW OF 203 TO THE SW  
OF TN 03 S, R 69 E, S 17  
S 73deg, 24min, 3sec W at distance of 112ft

**DOC # 0130400**  
08:23 PM  
**Official Record**  
Recorded & Indexed By  
Lincoln County, NV  
Leslie Baucher - Recorder  
Book 237 Page 0347  
0130400

**LEGEND:**  
□ = CORNER  
● = LOCATION MONUMENT

DATE: OCTOBER 2007	FILE NAME: 071622_Brick_Claims.dwg	REVISION NUMBER: 071622_Brick_Claims.rvt
PROJECTION: NAD 83 CONUS	PLOT SCALE: 1" = 500'	DRAWN BY: ZSH
		MODIFIED BY: ZSH

**BRICK CLAIMS**  
**LITTLE MOUNTAIN**  
**MINING DISTRICT**

LOCATED BY:  
ZACHARY S. HENDERSON  
AGENT FOR:  
**NEVADA EAGLE RESOURCES LLC.**  
P.O. Box 66127  
Reno, NV 89511  
PH: (775) 863-1913  
EMAIL: jerrybaughman@stoglobal.net

TN 03 SOUTH, R 69 EAST, S 17, 20  
LANDER COUNTY, NEVADA