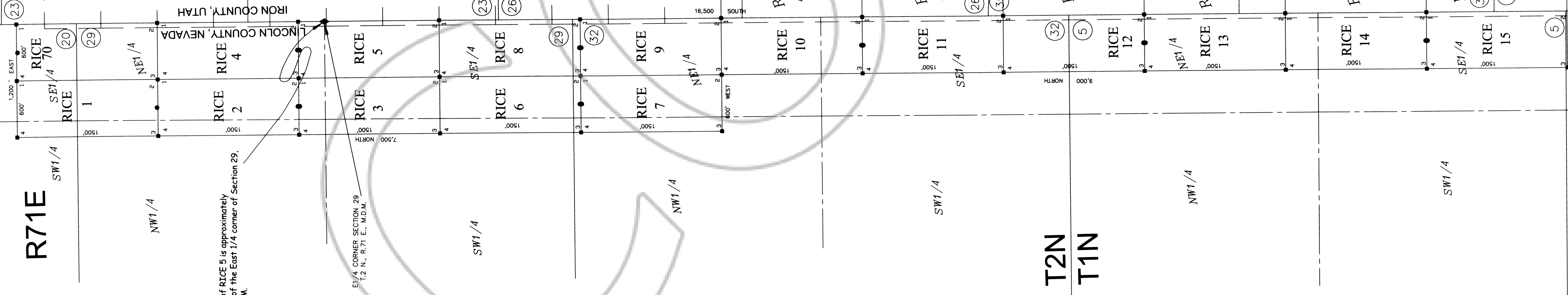


R71E

SW1/4

R20W



TIE POINT:  
The NE corner of RICE 5 is approximately  
304 feet north of the East 1/4 corner of Section 29,  
T2N, R71E, M.D.M.

E 1/4 CORNER SECTION 29  
1.2 N., R.71 E., M.D.M.

**NOTES:**

ALL LOCATION MONUMENTS AND CLAIM CORNERS  
ARE 2" x 2" x 4" WOOD.

LOCATION MONUMENTS ARE SET ON THE CENTERLINE  
OF EACH CLAIM 10' FROM NEAR ENDLINE AND 1400' FROM OPPOSITE ENDLINE.

ALL CLAIMS ARE 1500' LONG BY 600' WIDE.

**LOCATOR:**

NEWMONT USA LIMITED, d/b/a  
NEWMONT MINING CORPORATION  
555 FIFTH STREET  
ELKO, NEVADA 89801

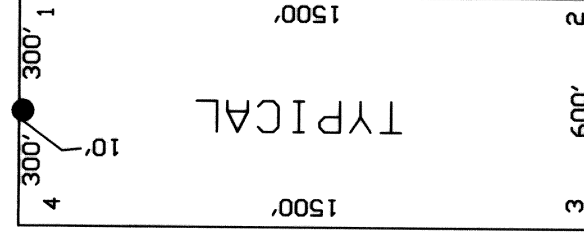
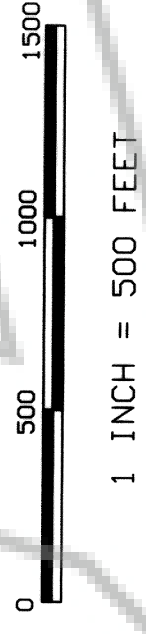
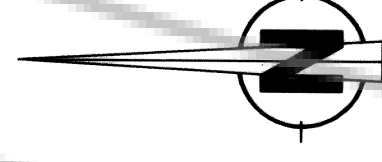
**OWNER:**

NEWMONT USA LIMITED d/b/a  
NEWMONT MINING CORPORATION  
555 FIFTH STREET  
ELKO, NEVADA 89801

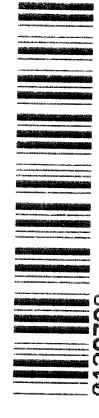
**LEGEND:**

- = 2" x 2" x 4" WOOD POST CLAIM CORNER
- = 2" x 2" x 4" WOOD POST LOCATION MONUMENT
- ◆ = FOUND SURVEY MONUMENT

T2N  
T1N



DOC # 0129798  
08/29/2007 11:45 AM  
**Office Record**  
RECORDED BY: [unreadable]  
NEVADA PUBLIC COUNTY - NV  
Leslie Boucher - Recorder  
Fee: \$244.00 Page: 1 of 1  
Book-235 Page-0004



TYPICAL LODE CLAIM  
UNLESS OTHERWISE SHOWN  
LOCATION MONUMENT MAY LIE AT EITHER END OF THE CLAIM

CLAIM MAP OF

RICE 1-15 & RICE 70

Lode Claims located within

T2N, R71E, Sections 20, 29 & 32 and  
T1N, R71E, Sections 5 & 8, M.D.M.

Lincoln County, Nevada

NEWMONT MINING CORPORATION