

5

4

3

T5N

R63E

CV 1	CV 2	CV 3	CV 4	CV 5	CV 6	CV 7	CV 8	CV 9	CV 10	CV 11	CV 12	CV 13
CV 14	CV 16	CV 18	CV 20	CV 22	CV 24	CV 26	CV 28	CV 30	CV 32	CV 34	CV 36	CV 38
CV 15	CV 17	CV 19	CV 21	CV 23	CV 25	CV 27	CV 29	CV 31	CV 33	CV 35	CV 37	CV 39
CV 40	CV 42	CV 44	CV 46	CV 48	CV 50	CV 52	CV 54	CV 56	CV 58	CV 60	CV 62	CV 64
CV 41	CV 43	CV 45	CV 47	CV 49	CV 51	CV 53	CV 55	CV 57	CV 59	CV 61	CV 63	CV 65
					CV 66	CV 68	CV 70	CV 72	CV 74	CV 76	CV 78	CV 80
					CV 67	CV 69	CV 71	CV 73	CV 75	CV 77	CV 79	CV 81
					CV 86	CV 88	CV 90	CV 92	CV 94	CV 95	CV 96	CV 97
					CV 87	CV 89	CV 91	CV 93				
					CV 98	CV 100	CV 102	CV 104				



0 500 1000
SCALE

U.S. Survey Foot
Sections projected using
Nevada BLM GCDB

CV 99 CV 101 CV 103 CV 105

27

20

21

22

TIE POINT:
The SE corner of CV 85 is approximately 13,526 feet south and 7765 feet west of the SW corner of Section 36, T6N, R63E, M.D.M.

CLAIM LOCATION DATES:
April 30, 2007: CV 1-105
May 1, 2007: CV 106-184

LODE CLAIM MAP
CV 1-184

T4-5N, R63-64E, M.D.M.
LINCOLN COUNTY, NEVADA

Locator:
NEVORO NEVADA INC.
1201 TERMINAL, #221
RENO, NEVADA 89502

DOC # 0129527
07/18/2007 04:49 PM
Official Record
RECORDED & INDEXED BY
NEVORO NEVADA INC.
Lincoln County - NV
Leslie Boucher - Recorder
Fee \$2,764.00 Page 1 of 2
RPTT Recorded By: RE
Book- 233 Page- 0624
0129527

600' E-W
TYPICAL CLAIM
1500' N-S
LOCATION MONUMENT

ALL CLAIMS ARE 1500' x 600' UNLESS OTHERWISE NOTED.
ALL MONUMENTS ARE 2" x 2" x 4" WOODEN POSTS.
LOCATION MONUMENTS ARE SET 10' INSIDE CLAIM BOUNDARY UNLESS OTHERWISE NOTED

20

21

22

29

28

27

32

33

34

5

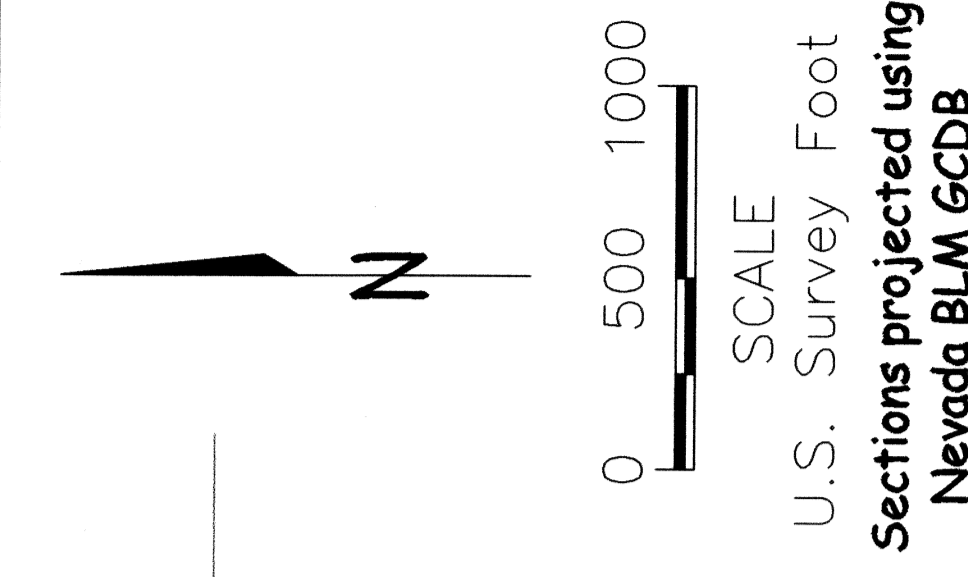
4

3

8

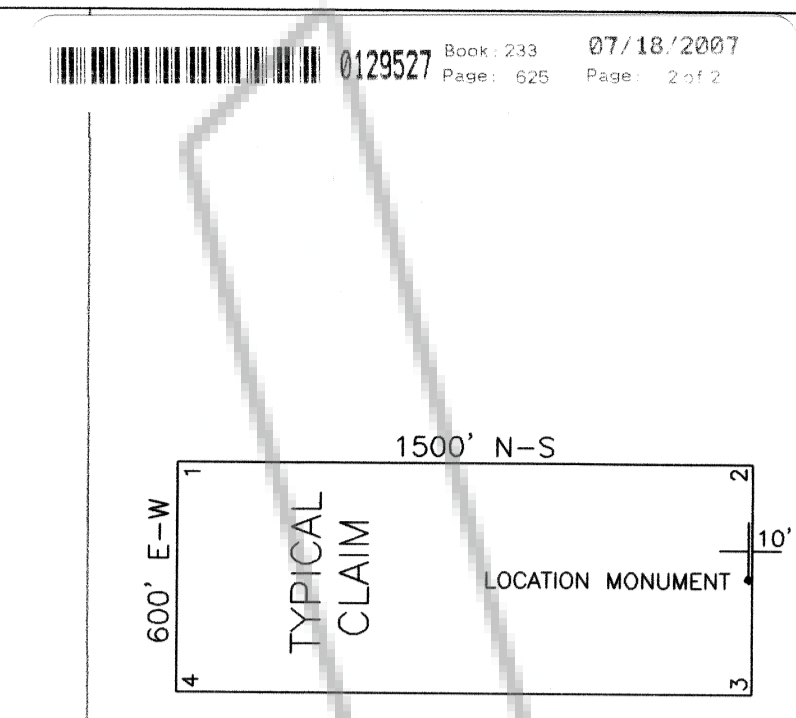
9

10



R63E

T5N
T4N



ALL CLAIMS ARE 1500' x 600' UNLESS OTHERWISE NOTED.
ALL MONUMENTS ARE 2" x 2" x 4" WOODEN POSTS.
LOCATION MONUMENTS ARE SET 10' INSIDE CLAIM BOUNDARY UNLESS OTHERWISE NOTED.

CLAIM LOCATION DATES:
April 30, 2007: CV 1-105
May 1, 2007: CV 106-184

TIE POINT:
The SE corner of CV 85 is approximately 13,526 feet south and 7765 feet west of the SW corner of Section 36, T6N, R63E, M.D.M.

LODE CLAIM MAP
CV 1-184
T4-5N, R63-64E, M.D.M.
LINCOLN COUNTY, NEVADA

Locator:
NEVORO NEVADA INC.
1201 TERMINAL, #221
RENO, NEVADA 89502

Drawn By: ARD JUNE 2007 SHEET 2 OF 2
Survey and Map by:
MINERAL EXPLORATION SERVICES LLC
5655 REGGINS COURT, SUITE 15 RENO, NEVADA 89502
(775) 954-1082 fax: (775) 823-6882

				CV 99	CV 101	CV 103	CV 105		
				CV 106	CV 108	CV 110	CV 112		
				CV 107	CV 109	CV 111	CV 113	CV 114	
				CV 115	CV 117	CV 119	CV 121	CV 123	CV 125
				CV 116	CV 118	CV 120	CV 122	CV 124	CV 126
				CV 135	CV 137	CV 139	CV 141	CV 143	CV 145
				CV 136	CV 138	CV 140	CV 142	CV 144	CV 146
				CV 135	CV 137	CV 139	CV 141	CV 143	CV 145
				CV 136	CV 138	CV 140	CV 142	CV 144	CV 146
				CV 147	CV 148	CV 150	CV 152	CV 154	CV 153
				CV 147	CV 148	CV 150	CV 152	CV 154	CV 153
				CV 165	CV 167	CV 169	CV 171	CV 173	CV 174
				CV 165	CV 167	CV 169	CV 171	CV 173	CV 174
				CV 166	CV 168	CV 170	CV 172	CV 174	CV 184
				CV 166	CV 168	CV 170	CV 172	CV 174	CV 184
				CV 175	CV 176	CV 177	CV 178	CV 179	CV 180
				CV 175	CV 176	CV 177	CV 178	CV 179	CV 180
				CV 180	CV 181	CV 182	CV 183	CV 184	CV 184
				CV 180	CV 181	CV 182	CV 183	CV 184	CV 184