

**LODE CLAIM MAP**  
**CROSS 1,3,5,7,9-30,53-60,83-90,113-120,132-135,158-185**  
 T4-5N, R63-64E, M.D.M.  
 LINCOLN COUNTY, NEVADA

*Locator:*  
**NEVORO NEVADA INC.**  
**1201 TERMINAL, #221**  
**RENO, NEVADA 89502**

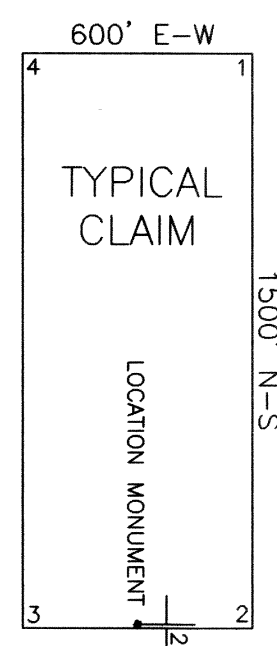
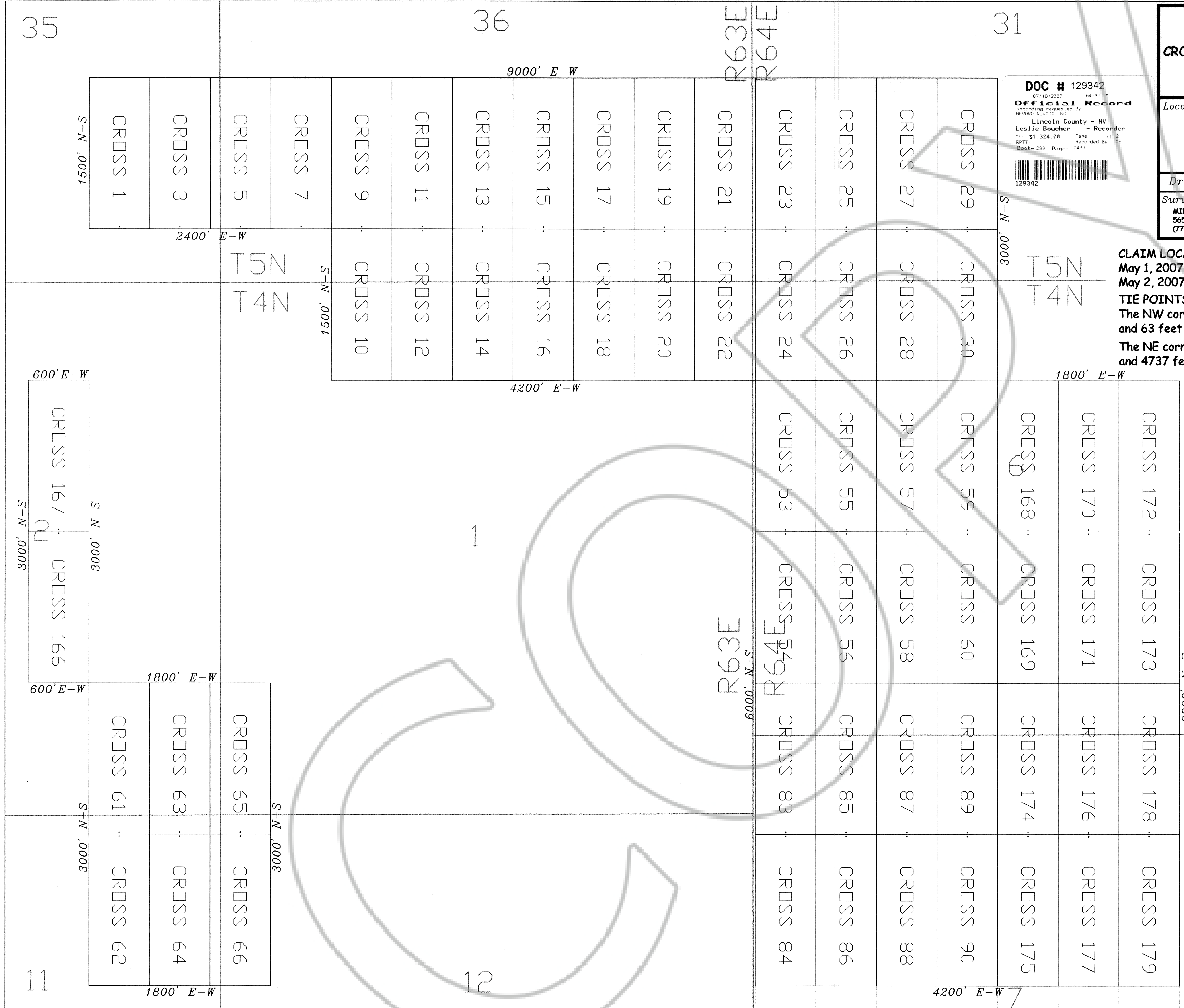
*Drawn By:* ARD | *JUNE 2007* | *SHEET 1 OF 2*

*Survey and Map by:*  
 MINERAL EXPLORATION SERVICES, LLC  
 5655 RIGGINS COURT, SUITE 10 RENO, NEVADA 89502  
 (775) 954-1082 fax: (775) 829-6882

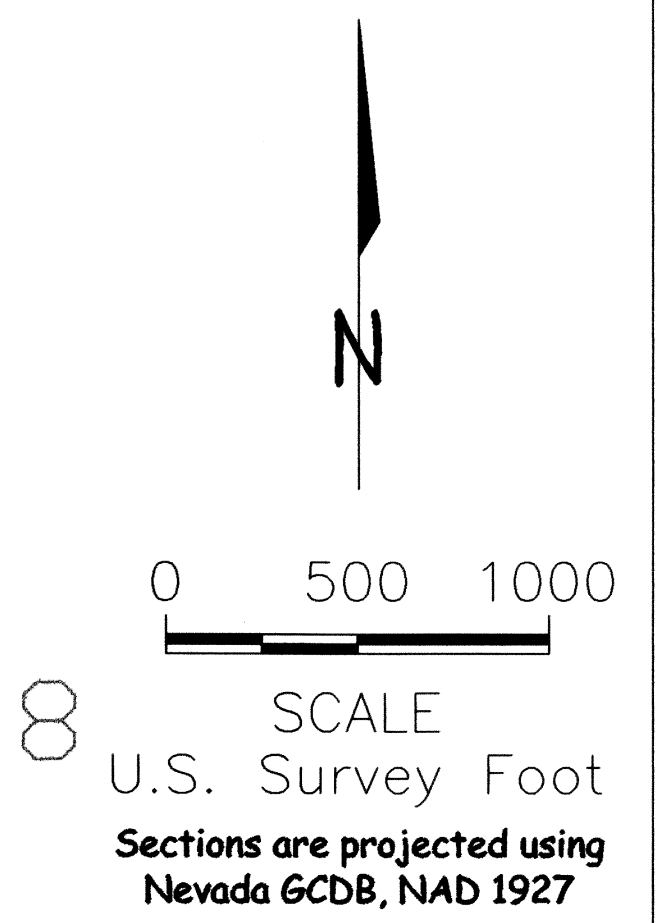
DOC # 129342  
 07/16/2007 04:31 PM  
**Official Record**  
 Recording requested By  
 NEVORO NEVADA, INC.  
 Lincoln County - NV  
 Leslie Boucher - Recorder  
 Fee: \$1,324.00 Page: 1 of 2  
 8/11/07 Recorded By: LE  
 Book- 233 Page- 0438  
 129342

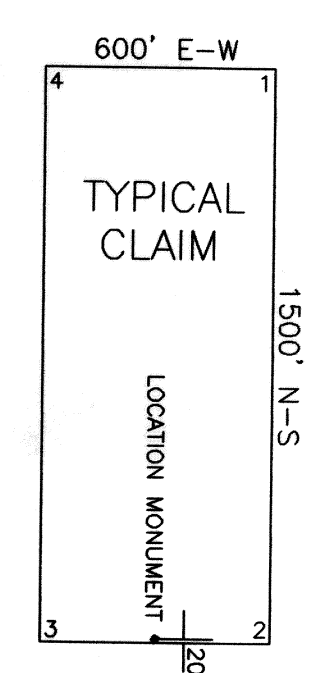
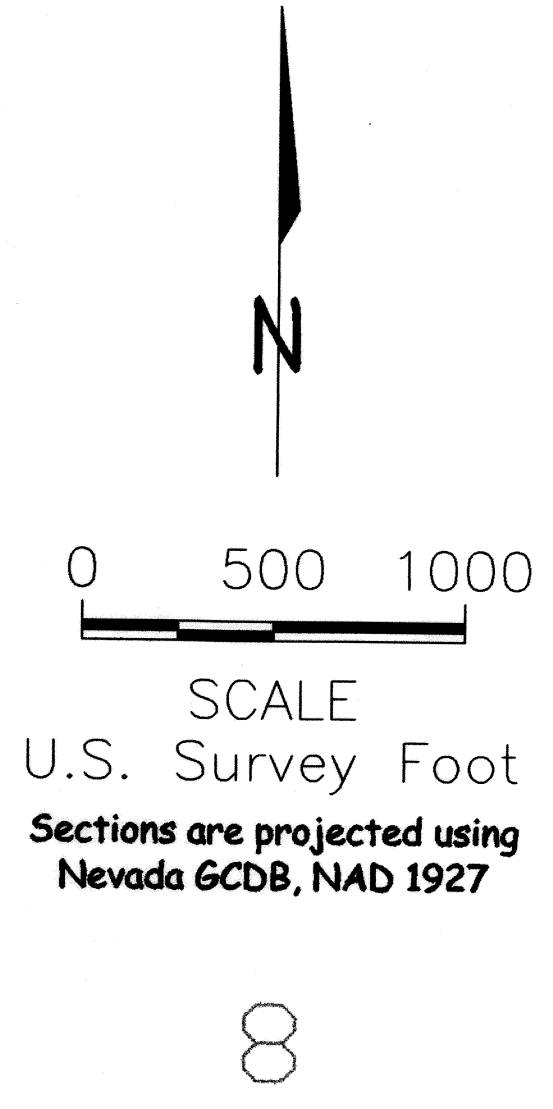
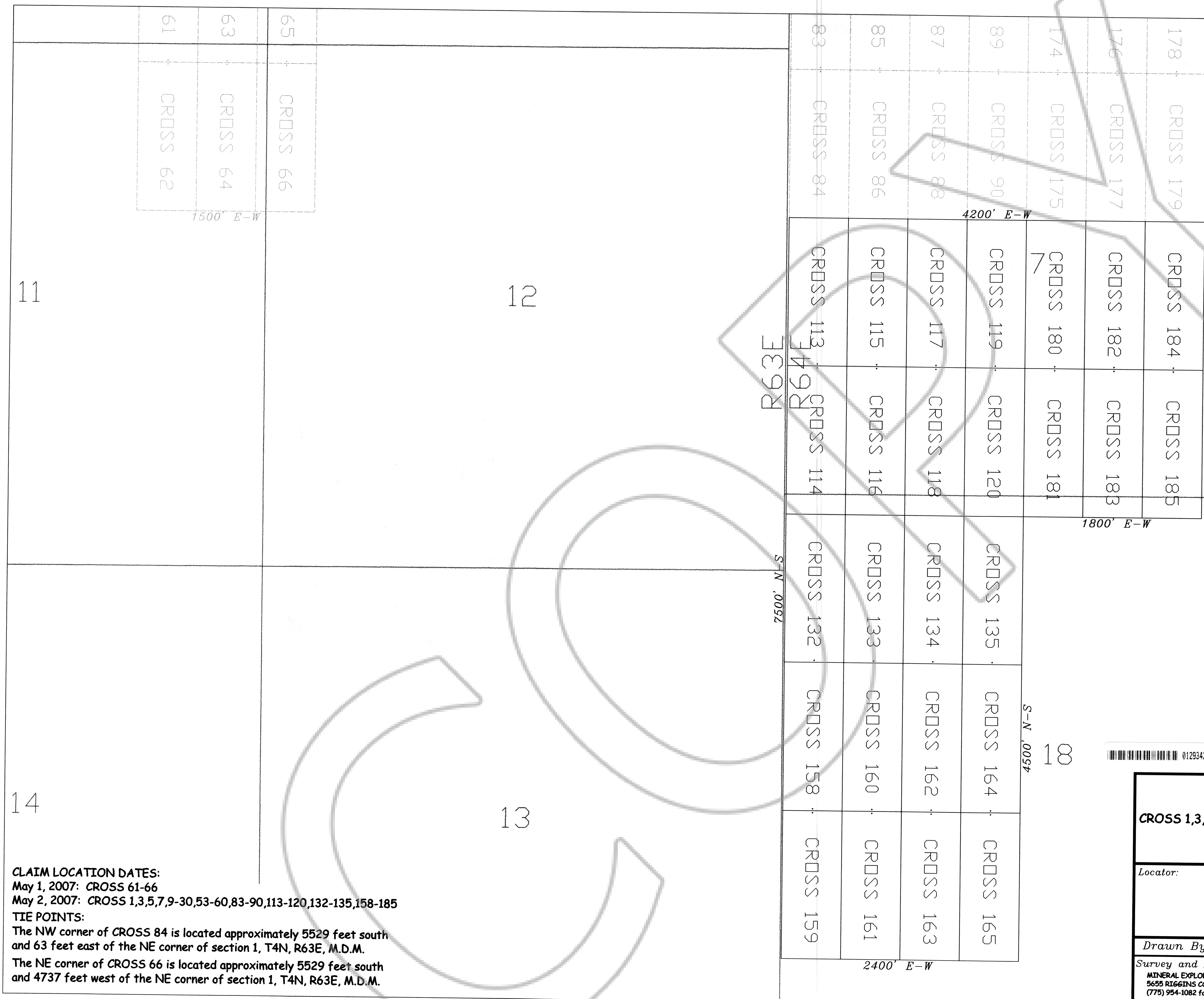
**CLAIM LOCATION DATES:**  
 May 1, 2007: CROSS 61-66  
 May 2, 2007: CROSS 1,3,5,7,9-30,53-60,83-90,113-120,132-135,158-185

**TIE POINTS:**  
 The NW corner of CROSS 84 is located approximately 5529 feet south and 63 feet east of the NE corner of section 1, T4N, R63E, M.D.M.  
 The NE corner of CROSS 66 is located approximately 5529 feet south and 4737 feet west of the NE corner of section 1, T4N, R63E, M.D.M.



ALL CLAIMS ARE 1500' x 600' UNLESS OTHERWISE NOTED.  
 ALL MONUMENTS ARE 2' x 2' x 4' WOODEN POSTS.  
 LOCATION MONUMENTS ARE SET 20' INSIDE CLAIM BOUNDARY UNLESS OTHERWISE NOTED





ALL CLAIMS ARE 1500' x 600' UNLESS OTHERWISE NOTED.  
ALL MONUMENTS ARE 2" x 2" x 4" WOODEN POSTS.  
LOCATION MONUMENTS ARE SET 20' INSIDE CLAIM BOUNDARY UNLESS OTHERWISE NOTED.

0129342 Book 231 07/18/2007  
Page 439 Page 2 of 2

**CLAIM LOCATION DATES:**  
May 1, 2007: CROSS 61-66  
May 2, 2007: CROSS 1,3,5,7,9-30,53-60,83-90,113-120,132-135,158-185  
**TIE POINTS:**  
The NW corner of CROSS 84 is located approximately 5529 feet south and 63 feet east of the NE corner of section 1, T4N, R63E, M.D.M.  
The NE corner of CROSS 66 is located approximately 5529 feet south and 4737 feet west of the NE corner of section 1, T4N, R63E, M.D.M.

<b>LODE CLAIM MAP</b>		
<b>CROSS 1,3,5,7,9-30,53-60,83-90,113-120,132-135,158-185</b>		
T4-5N, R63-64E, M.D.M. LINCOLN COUNTY, NEVADA		
Locator:		
<b>NEVORO NEVADA INC.</b> 1201 TERMINAL, #221 RENO, NEVADA 89502		
Drawn By: ARD	JUNE 2007	SHEET 2 OF 2
Survey and Map by:		
MINERAL EXPLORATION SERVICES, LLC 5655 RIGGINS COURT, SUITE 15 RENO, NEVADA 89502 (775) 954-1082 fax: (775) 829-6882		