

The NW corner of CDP 39 is located about about 1,800 feet NORTH and 5,945 feet WEST from the East Quarter Corner of Section 25 Township 3 South, Range 56 East, Mount Diablo Base & Meridian.

The SE corner of CDP 30 is located about about 1,100 feet SOUTH and 2,345 feet WEST from the East Quarter Corner of Section 25 Township 3 South, Range 56 East, Mount Diablo Base & Meridian.

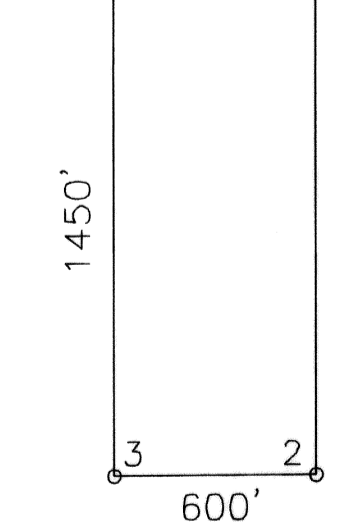
EXPLANATION

- ⊗ Claim Location Monument
- Claim Corner Monument
- - - - - Projected Section Line from BLM GCDB Data
- ◇ Survey Corner Monument Projected From BLM GCDB Data
- ◀ Survey Corner Monument Found
- IS 184 Previously Located Valid Mining Claims

Note: All claims are tied to the East Quarter Corner of Section 25 Township 3 South, Range 56 East, Mount Diablo Base & Meridian.

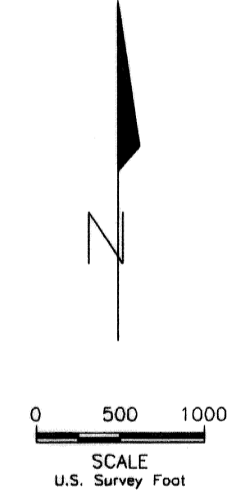
CLAIM LOCATION DATES:
 CDP 29,31,33,35,37,39 - FEBRUARY 20, 2007
 CDP 30,32,34,36,38,40 - FEBRUARY 21, 2007

1-1/2" x 1-1/2" x 4' WOOD POST LOCATION NOTICE AT NE CORNER OF CLAIM



ALL CLAIMS ARE 1450' x 600' UNLESS OTHERWISE NOTED.

TYPICAL CLAIM



CDP PLACER CLAIMS 29-40

CLAIM MAP
 T3S, R56E, MDBM
 LINCOLN COUNTY NEVADA

GALWAY RESOURCES US INC.
 380 Court Street
 Elko, Nevada 89801

Drawn By: RBL Date: February 2007
 AutoCad 14 Drawing File: CDP 29_40 CNTY.DWG

Survey and Map by:
 LYMAN EXPLORATION & SURVEYING OUTFIT
 612 West 1635 North, Suite 101, Clinton, UT 84015
 (801)540-0317 Fax: (801)825-3969