

Official RecordRecording requested By
ARTISAN LAND SURVEY

Lincoln County - NV

Leslie Boucher - Recorder

Fee: \$26.00

Page 1 of 13

RPTT:

Recorded By: LB

Book- 227 Page- 0219

CORNER RECC

VARIOUS SECTIONS
T 1 & 2 & 3 N
R 66 & 67 & 68 E
MOUNT DIABLO MERIDIAN

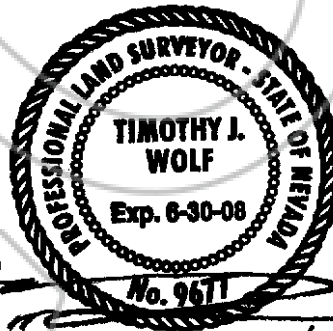


0128065

SURVEYOR'S CERTIFICATESheet 1 of 13

I, Timothy J. Wolf, a Professional Land Surveyor registered in the State of Nevada, certify that:

- 1) This corner record represents the establishment or restoration of a corner or accessory to a corner conducted under my direct supervision.
- 2) The monument or accessories perpetuated lie within Section(s) noted above Townships and Ranges as noted above, Mount Diablo Meridian, Lincoln County, Nevada, and the establishment or restoration was completed in December, 2006.
- 3) This corner record has been filed pursuant to N.R.S. 329.140 or N.R.S. 329.150 and complies with the provisions of Nevada Administrative Code Section 329 and any local ordinances in effect on the date that the establishment or restoration was completed.
- 4) The monument or witness corner monument and accessories found are of the character shown, occupy the positions indicated and are of sufficient durability.

**RETURN TO:**

Artisan Land Survey, Inc.

P.O. Box 33434

Las Vegas, NV 89133-3434

(702) 233-3451

Timothy J. Wolf
Professional Land Surveyor
Nevada License No. 9677
Agent for Artisan Land Survey, Inc.

2/14/06



TOWNSHIP CORNER
 T 2 & 3 N
 R 66 & 67 E
 M.D.M.

CORNER RECORD

Sheet 2 of 13

MONUMENTS

ARTISAN L.S.
 GEODETIC "WHERE ART & MEASUREMENT SCIENCE CONVERGE"
 NORTH

PRIMARY CONTROL

SET 1.5" DIA. ALUMINUM
 MONUMENT AS SHOWN
 LAT: 38°00'59.55363"N
 LON: 114°27'51.55805"W

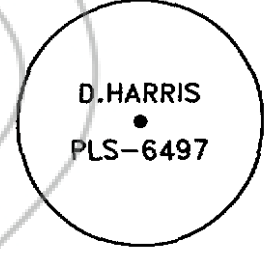


SET 1.5" DIA. ALUMINUM
 MONUMENT AS SHOWN
 LAT: 38°01'34.74787"N
 LON: 114°28'51.82535"W



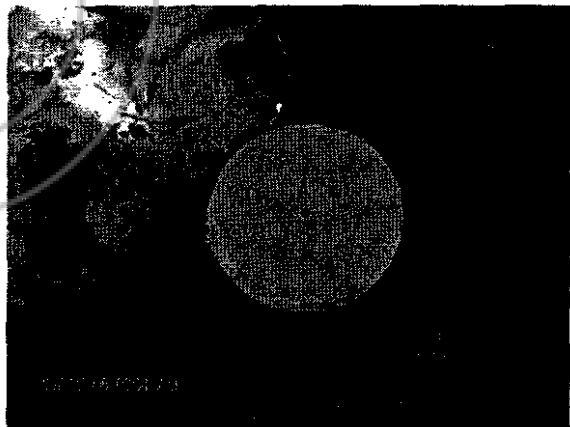
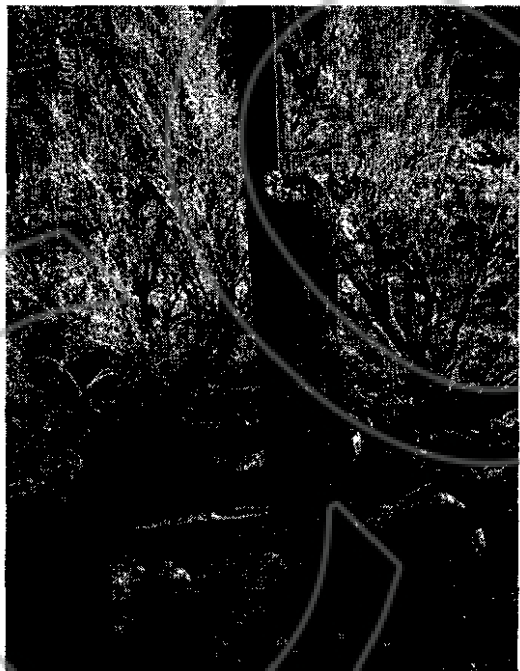
CADASTRAL MONUMENT

FOUND 3X3" CEDAR SCRIBED &
 1.5"DIA. PLASTIC MON. PLS 6497
 D.HARRIS AS SHOWN, SEE PHOTOS
 LAT: 38°04'11.10440"N
 LON: 114°31'11.95030"W
 (MINIMUM OF 20-MINUTES STATIC)



DATUM

CP'S 4FLD & 8MLE WERE
 ESTABLISHED USING NGS' OPUS
 WITH 38-HOURS± OF STATIC
 DATA, NGS NAD83 (2002).
[HTTP://WWW.NGS.NOAA.GOV/OPUS](http://www.ngs.noaa.gov/opus)



REFERENCES

MAY 1873 PLAT & FIELD NOTES APPROVED BY E.S. DAVIS, SURVEYOR GENERAL, NEVADA, G.L.O.

Art Artisan Land Survey, Inc.
 "Where Art & Measurement Science Converge"



0128065

Book: 227
Page: 221

12/15/2006
Page: 3 of 13

TOWNSHIP CORNER
T 2 & 3 N
R 67 & 68 E
M.D.M.

CORNER RECORD

Sheet 3 of 13

MONUMENTS

ARTISAN L.S.
GEODETTIC "WHERE ART & MEASUREMENT SCIENCE CONVERGE"
NORTH

PRIMARY CONTROL

SET 1.5" DIA. ALUMINUM
MONUMENT AS SHOWN
LAT: 38°00'59.55363"N
LON: 114°27'51.55805"W

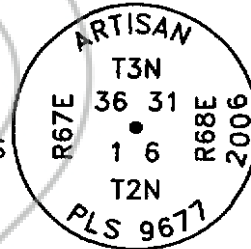


SET 1.5" DIA. ALUMINUM
MONUMENT AS SHOWN
LAT: 38°01'34.74787"N
LON: 114°28'51.82535"W



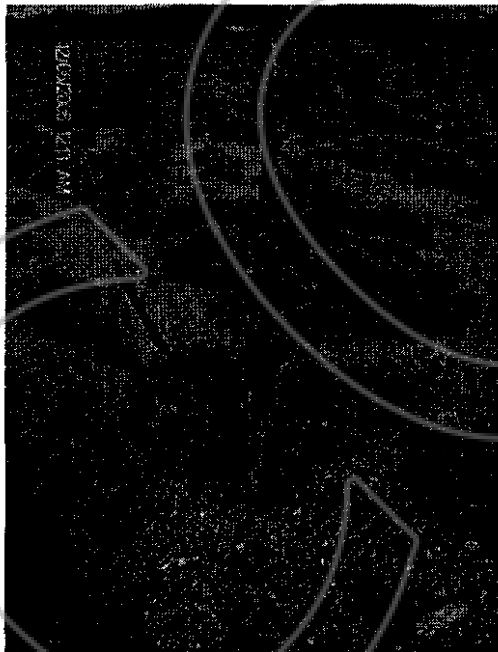
CADASTRAL MONUMENT

FOUND 4" DIA. CEDAR POST
& SMALL MOUND OF STONE
SET 1.5" DIA. ALUMINUM
MONUMENT AS SHOWN, SEE PHOTOS
LAT: 38°04'09.94587"N
LON: 114°24'34.41395"W
(MINIMUM OF 20-MINUTES STATIC)



DATUM

CP'S 4FLD & 8MLE WERE
ESTABLISHED USING NGS' OPUS
WITH 38-HOURS± OF STATIC
DATA, NGS NAD83 (2002).
[HTTP://WWW.NGS.NOAA.GOV/OPUS](http://www.ngs.noaa.gov/opus)



REFERENCES

MAY 1873 PLAT & FIELD NOTES APPROVED BY E.S. DAVIS, SURVEYOR GENERAL, NEVADA, G.L.O.

Art Artisan Land Survey, Inc.
"Where Art & Measurement Science Converge"



0128065

Book: 227
Page: 222

12/15/2006
Page: 4 of 13

SEC.'S 12/13/7/18
T 2 N
R 67 & 68 E
M.D.M.

CORNER RECORD

Sheet 4 of 13

MONUMENTS

ARTISAN L.S.
"WHERE ART & MEASUREMENT SCIENCE CONVERGE"
GEODETTIC NORTH

PRIMARY CONTROL

SET 1.5" DIA. ALUMINUM
MONUMENT AS SHOWN
LAT: 38°00'59.55363"N
LON: 114°27'51.55805"W

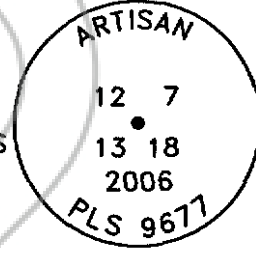


SET 1.5" DIA. ALUMINUM
MONUMENT AS SHOWN
LAT: 38°01'34.74787"N
LON: 114°28'51.82535"W



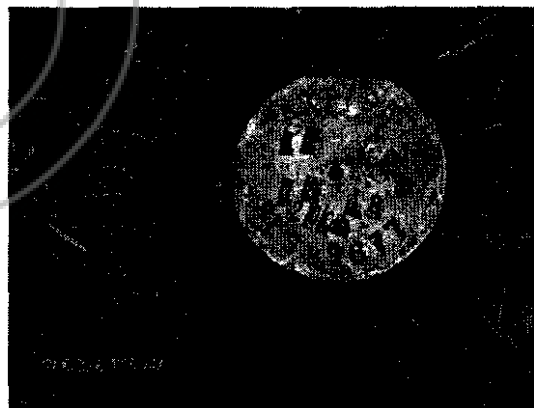
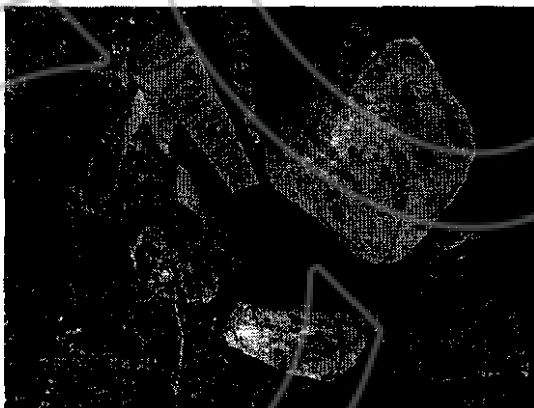
CADASTRAL MONUMENT

FOUND 13X8X7" GRANITE
IN MOUND STONE
SET 1.5" DIA. ALUMINUM
MONUMENT AS SHOWN, SEE PHOTOS
LAT: 38°02'24.81556"N
LON: 114°24'35.77741"W
(MINIMUM OF 20-MINUTES STATIC)



DATUM

CP'S 4FLD & 8MLE WERE
ESTABLISHED USING NGS' OPUS
WITH 38-HOURS± OF STATIC
DATA, NGS NAD83 (2002).
[HTTP://WWW.NGS.NOAA.GOV/OPUS](http://www.ngs.noaa.gov/opus)



REFERENCES

MAY 1873 PLAT & FIELD NOTES APPROVED BY E.S. DAVIS, SURVEYOR GENERAL, NEVADA, G.L.O.

Art Artisan Land Survey, Inc.
"Where Art & Measurement Science Converge"



SEC.'S 13/24/18/19
T 2 N
R 67 & 68 E
M.D.M.

CORNER RECORD

Sheet 5 of 13

MONUMENTS

ARTISAN L.S.
"WHERE ART & MEASUREMENT SCIENCE CONVERGE"
GEODETTIC
NORTH

PRIMARY CONTROL

SET 1.5" DIA. ALUMINUM
MONUMENT AS SHOWN
LAT: 38°00'59.55363"N
LON: 114°27'51.55805"W

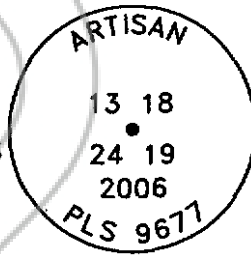


SET 1.5" DIA. ALUMINUM
MONUMENT AS SHOWN
LAT: 38°01'34.74787"N
LON: 114°28'51.82535"W



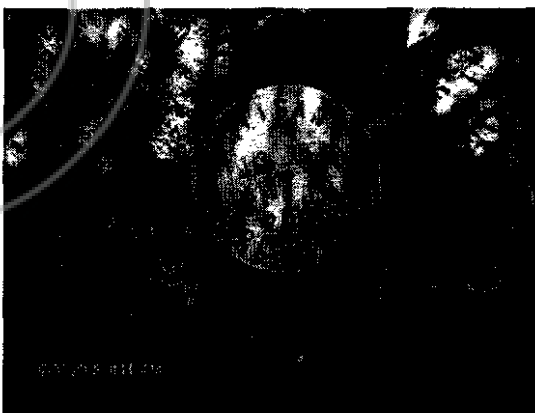
CADASTRAL MONUMENT

FOUND 13X8X7" GRANITE
IN MOUND STONE
SET 1.5" DIA. ALUMINUM
MONUMENT AS SHOWN, SEE PHOTOS
LAT: 38°01'32.89480"N
LON: 114°24'35.78098"W
(MINIMUM OF 20-MINUTES STATIC)



DATUM

CP'S 4FLD & 8MLE WERE
ESTABLISHED USING NGS' OPUS
WITH 38-HOURS± OF STATIC
DATA, NGS NAD83 (2002).
[HTTP://WWW.NGS.NOAA.GOV/OPUS](http://www.ngs.noaa.gov/opus)



REFERENCES

MAY 1873 PLAT & FIELD NOTES APPROVED BY E.S. DAVIS, SURVEYOR GENERAL, NEVADA, G.L.O.

Artisan Land Survey, Inc.
Art "Where Art & Measurement Science Converge"



0128065

Book: 227
Page: 224

12/15/2006
Page: 6 of 13

TOWNSHIP CORNER
T 1 & 2 N
R 67 & 68 E
M.D.M.

CORNER RECORD

Sheet 6 of 13

MONUMENTS

ARTISAN L.S.
"WHERE ART & MEASUREMENT SCIENCE CONVERGE"
GEODETTIC NORTH

PRIMARY CONTROL

SET 1.5" DIA. ALUMINUM
MONUMENT AS SHOWN
LAT: 38°00'59.55363"N
LON: 114°27'51.55805"W

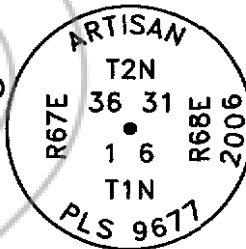


SET 1.5" DIA. ALUMINUM
MONUMENT AS SHOWN
LAT: 38°01'34.74787"N
LON: 114°28'51.82535"W

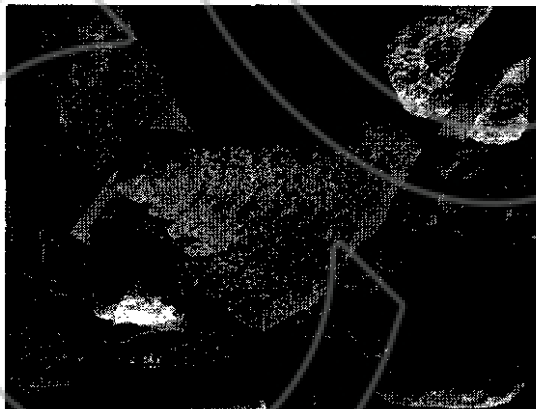


CADASTRAL MONUMENT

FOUND 4" DIA. CEDAR POST
PYRAMID 16X8X8" GRANITE NOTCHED
SIX ON ALL SIDES IN MOUND
SET 1.5" DIA. ALUMINUM
MONUMENT AS SHOWN, SEE PHOTOS
LAT: 37°58'56.19348"N
LON: 114°24'35.86885"W
(MINIMUM OF 20-MINUTES STATIC) DATUM



CP'S 4FLD & 8MLE WERE
ESTABLISHED USING NGS' OPUS
WITH 38-HOURS± OF STATIC
DATA, NGS NAD83 (2002).
[HTTP://WWW.NGS.NOAA.GOV/OPUS](http://www.ngs.noaa.gov/opus)



REFERENCES

MAY 1873 PLAT & FIELD NOTES APPROVED BY E.S. DAVIS, SURVEYOR GENERAL, NEVADA, G.L.O.

Artisan Land Survey, Inc.
"Where Art & Measurement Science Converge"



SEC.'S 35/36/2/1
T 1 & 2 N
R 67 E
M.D.M.

CORNER RECORD

Sheet 7 of 13

MONUMENTS

ARTISAN L.S.
GEODETTIC "WHERE ART & MEASUREMENT SCIENCE CONVERGE"
NORTH

PRIMARY CONTROL

SET 1.5" DIA. ALUMINUM
MONUMENT AS SHOWN
LAT: 38°00'59.55363"N
LON: 114°27'51.55805"W

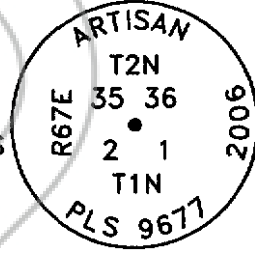


SET 1.5" DIA. ALUMINUM
MONUMENT AS SHOWN
LAT: 38°01'34.74787"N
LON: 114°28'51.82535"W



CADASTRAL MONUMENT

F 3X3" INSCRIBED CEDAR POST
IN MOUND STONE
SET 1.5" DIA. ALUMINUM
MONUMENT AS SHOWN, SEE PHOTOS
LAT: 37°58'56.04863"N
LON: 114°25'40.07449"W
(MINIMUM OF 20-MINUTES STATIC)



DATUM

CP'S 4FLD & 8MLE WERE
ESTABLISHED USING NGS' OPUS
WITH 38-HOURS± OF STATIC
DATA, NGS NAD83 (2002).
[HTTP://WWW.NGS.NOAA.GOV/OPUS](http://www.ngs.noaa.gov/opus)



REFERENCES

MAY 1873 PLAT & FIELD NOTES APPROVED BY E.S. DAVIS, SURVEYOR GENERAL, NEVADA, G.L.O.

Art Artisan Land Survey, Inc.
"Where Art & Measurement Science Converge"



SEC.'S 32/33/5/4
T 1 & 2 N
R 67 E
M.D.M.

CORNER RECORD

Sheet 8 of 13

MONUMENTS

ARTISAN L.S.
"WHERE ART & MEASUREMENT SCIENCE CONVERGE"
GEODETTIC
NORTH

PRIMARY CONTROL

SET 1.5" DIA. ALUMINUM
MONUMENT AS SHOWN
LAT: 38°00'59.55363"N
LON: 114°27'51.55805"W

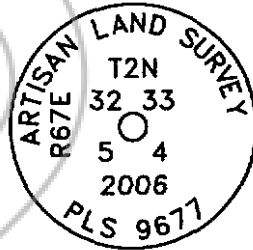


SET 1.5" DIA. ALUMINUM
MONUMENT AS SHOWN
LAT: 38°01'34.74787"N
LON: 114°28'51.82535"W

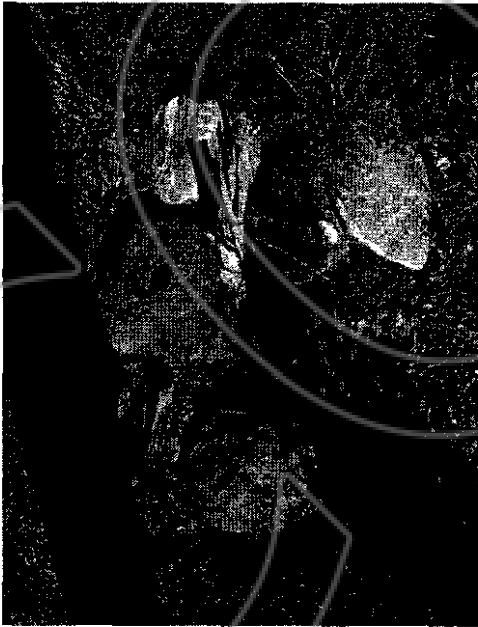


CADASTRAL MONUMENT

F 1" HEX DRILL BIT
IN MOUND STONE
WIRED 2" DIA. ALUMINUM
WASHER AS SHOWN, SEE PHOTOS
LAT: 37°58'56.15941"N
LON: 114°28'58.99996"W
(MINIMUM OF 20-MINUTES STATIC)



DATUM



CP'S 4FLD & 8MLE WERE
ESTABLISHED USING NGS' OPUS
WITH 38-HOURS± OF STATIC
DATA, NGS NAD83 (2002).
[HTTP://WWW.NGS.NOAA.GOV/OPUS](http://www.ngs.noaa.gov/opus)



REFERENCES

MAY 1873 PLAT & FIELD NOTES APPROVED BY E.S. DAVIS, SURVEYOR GENERAL, NEVADA, G.L.O.

Art Artisan Land Survey, Inc.
"Where Art & Measurement Science Converge"

TOWNSHIP CORNER
T 1 & 2 N
R 66 & 67 E
M.D.M.

CORNER RECORD

Sheet 9 of 13

MONUMENTS

ARTISAN L.S.
"WHERE ART & MEASUREMENT SCIENCE CONVERGE"
GEODETTIC NORTH

PRIMARY CONTROL

SET 1.5" DIA. ALUMINUM
MONUMENT AS SHOWN
LAT: 38°00'59.55363"N
LON: 114°27'51.55805"W

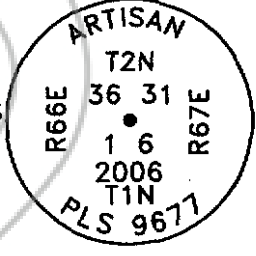


SET 1.5" DIA. ALUMINUM
MONUMENT AS SHOWN
LAT: 38°01'34.74787"N
LON: 114°28'51.82535"W



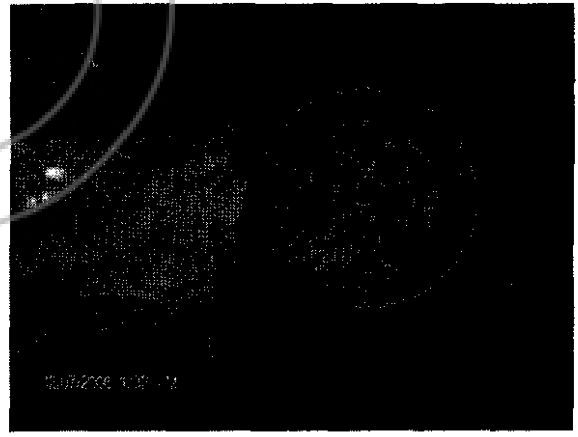
CADASTRAL MONUMENT

FOUND S8 SIGN, 14" CUBED
GRANITE NOTCHES N&E
SET 1.5"D ALUMINUM MONUMENT AS
SHOWN, SEE PHOTOS
LAT: 37°58'56.34234"N
LON: 114°31'09.77484"W
(MINIMUM OF 20-MINUTES STATIC)



DATUM

CP'S 4FLD & 8MLE WERE
ESTABLISHED USING NGS' OPUS
WITH 38-HOURS± OF STATIC
DATA, NGS NAD83 (2002).
[HTTP://WWW.NGS.NOAA.GOV/OPUS](http://www.ngs.noaa.gov/opus)



REFERENCES

MAY 1873 PLAT & FIELD NOTES APPROVED BY E.S. DAVIS, SURVEYOR GENERAL, NEVADA, G.L.O.

Artisan Land Survey, Inc.
Art "Where Art & Measurement Science Converge"



0128065

Book: 227
Page: 228

12/15/2006
Page: 10 of 13

SEC.'S 24/25/19/30
T 2 N
R 66 & 67 E
M.D.M.

CORNER RECORD

Sheet 10 of 13

MONUMENTS

ARTISAN L.S.
"WHERE ART & MEASUREMENT SCIENCE CONVERGE"
GEODETTIC
NORTH

PRIMARY CONTROL

SET 1.5" DIA. ALUMINUM
MONUMENT AS SHOWN
LAT: 38°00'59.55363"N
LON: 114°27'51.55805"W



SET 1.5" DIA. ALUMINUM
MONUMENT AS SHOWN
LAT: 38°01'34.74787"N
LON: 114°28'51.82535"W



CADASTRAL
MONUMENT

FOUND 1" INVERTED HEX DRILL BIT
IN MOUND STONE, WITNESS POST
WIRED 2" DIA. ALUMINUM
WASHER AS SHOWN, SEE PHOTOS
LAT: 38°00'40.83597"N
LON: 114°31'11.78421"W
(MINIMUM OF 20-MINUTES STATIC)



DATUM

CP'S 4FLD & 8MLE WERE
ESTABLISHED USING NGS' OPUS
WITH 38-HOURS± OF STATIC
DATA, NGS NAD83 (2002).
[HTTP://WWW.NGS.NOAA.GOV/OPUS](http://www.ngs.noaa.gov/opus)



REFERENCES

MAY 1873 PLAT & FIELD NOTES APPROVED BY E.S. DAVIS, SURVEYOR GENERAL, NEVADA, G.L.O.

Art Artisan Land Survey, Inc.
"Where Art & Measurement Science Converge"



0128065

Book: 227
Page: 229

12/15/2006
Page: 11 of 13

SEC.'S 13/24/18/19
T 2 N
R 66 & 67 E
M.D.M.

CORNER RECORD

Sheet 11 of 13

MONUMENTS

ARTISAN L.S.
"WHERE ART & MEASUREMENT SCIENCE CONVERGE"
GEODETTIC NORTH

PRIMARY CONTROL

SET 1.5" DIA. ALUMINUM
MONUMENT AS SHOWN
LAT: 38°00'59.55363"N
LON: 114°27'51.55805"W

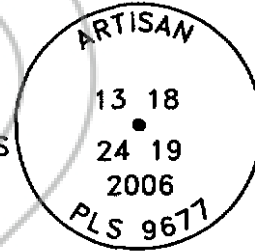


SET 1.5" DIA. ALUMINUM
MONUMENT AS SHOWN
LAT: 38°01'34.74787"N
LON: 114°28'51.82535"W



CADASTRAL MONUMENT

F 3X3" INSCRIBED CEDAR POST
IN MOUND STONE
SET 1.5" DIA. ALUMINUM
MONUMENT AS SHOWN, SEE PHOTOS
LAT: 38°01'34.25723"N
LON: 114°31'11.96117"W
(MINIMUM OF 20-MINUTES STATIC)



DATUM

CP'S 4FLD & 8MLE WERE
ESTABLISHED USING NGS' OPUS
WITH 38-HOURS± OF STATIC
DATA, NGS NAD83 (2002).
[HTTP://WWW.NGS.NOAA.GOV/OPUS](http://www.ngs.noaa.gov/opus)



REFERENCES

MAY 1873 PLAT & FIELD NOTES APPROVED BY E.S. DAVIS, SURVEYOR GENERAL, NEVADA, G.L.O.

Artisan Land Survey, Inc.

Art "Where Art & Measurement Science Converge"



0128065

Book: 227
Page: 230

12/15/2006
Page: 12 of 13

SEC.'S 12/13/7/18
T 2 N
R 66 & 67 E
M.D.M.

CORNER RECORD

Sheet 12 of 13

MONUMENTS

ARTISAN L.S.
"WHERE ART & MEASUREMENT SCIENCE CONVERGE"
GEODETTIC
NORTH

PRIMARY CONTROL

SET 1.5" DIA. ALUMINUM
MONUMENT AS SHOWN
LAT: 38°00'59.55363"N
LON: 114°27'51.55805"W

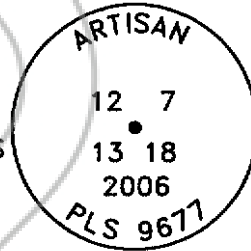


SET 1.5" DIA. ALUMINUM
MONUMENT AS SHOWN
LAT: 38°01'34.74787"N
LON: 114°28'51.82535"W



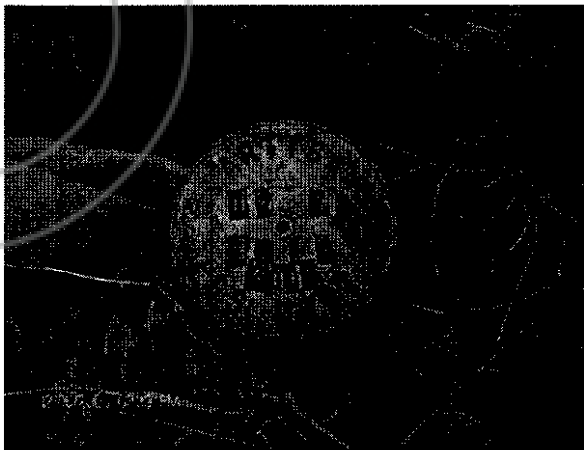
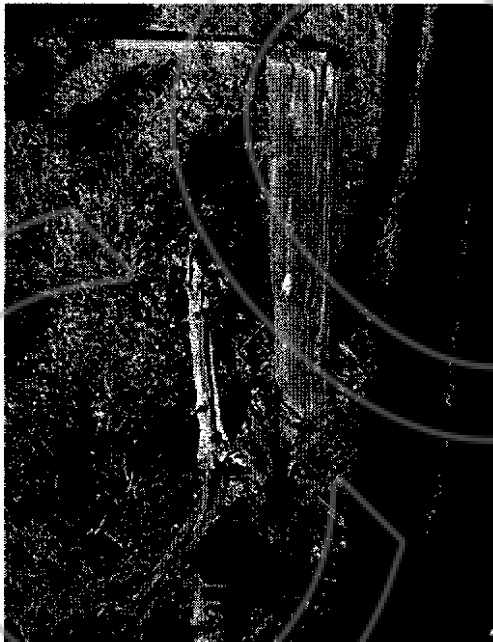
CADASTRAL MONUMENT

F 3X3" INSCRIBED CEDAR POST
& CEDAR STAKE
SET 1.5" DIA. ALUMINUM
MONUMENT AS SHOWN, SEE PHOTOS
LAT: 38°02'26.33218"N
LON: 114°31'12.50091"W
(MINIMUM OF 20-MINUTES STATIC)



DATUM

CP'S 4FLD & 8MLE WERE
ESTABLISHED USING NGS' OPUS
WITH 38-HOURS± OF STATIC
DATA, NGS NAD83 (2002).
[HTTP://WWW.NGS.NOAA.GOV/OPUS](http://www.ngs.noaa.gov/opus)



REFERENCES

MAY 1873 PLAT & FIELD NOTES APPROVED BY E.S. DAVIS, SURVEYOR GENERAL, NEVADA, G.L.O.

Art Artisan Land Survey, Inc.
"Where Art & Measurement Science Converge"



0128065

Book: 227
Page: 231

12/15/2006
Page 13 of 13

1/4 SEC 32/5
T 2 & 3 N
R 67 E
M.D.M.

CORNER RECORD

Sheet 13 of 13

MONUMENTS

ARTISAN L.S.
GEODETTIC "WHERE ART & MEASUREMENT SCIENCE CONVERGE"
NORTH

PRIMARY CONTROL

SET 1.5" DIA. ALUMINUM
MONUMENT AS SHOWN
LAT: 38°00'59.55363"N
LON: 114°27'51.55805"W

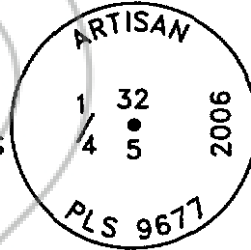


SET 1.5" DIA. ALUMINUM
MONUMENT AS SHOWN
LAT: 38°01'34.74787"N
LON: 114°28'51.82535"W



CADASTRAL MONUMENT

FOUND 4" DIA. CEDAR POST
4 NOTCHES EAST, 1 NOTCH WEST
SET 1.5" DIA. ALUMINUM
MONUMENT AS SHOWN, SEE PHOTOS
LAT: 38°04'11.20311"N
LON: 114°29'29.26728"W
(MINIMUM OF 20-MINUTES STATIC)



DATUM

CP'S 4FLD & 8MLE WERE
ESTABLISHED USING NGS' OPUS
WITH 38-HOURS± OF STATIC
DATA, NGS NAD83 (2002).
[HTTP://WWW.NGS.NOAA.GOV/OPUS](http://www.ngs.noaa.gov/opus)



REFERENCES

MAY 1873 PLAT & FIELD NOTES APPROVED BY E.S. DAVIS, SURVEYOR GENERAL, NEVADA, G.L.O.

Art Artisan Land Survey, Inc.
"Where Art & Measurement Science Converge"