

CLAIM MAP

WL9-1 to WL9-10

LINCOLN COUNTY, NEVADA

T.1N R.68E

SECTION 32

M.D.B. & M.

127435

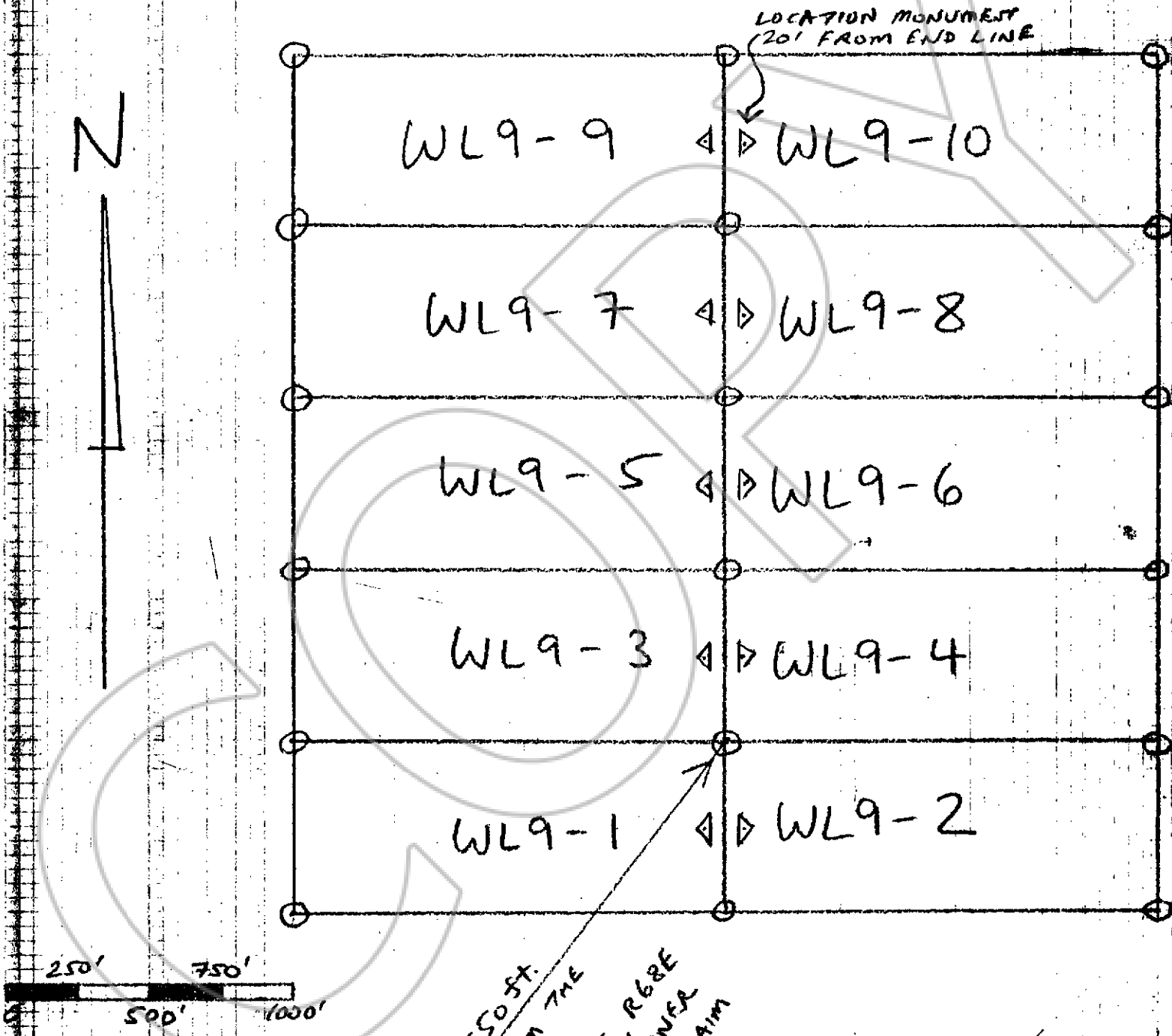
FILED FOR RECORDING
AT THE REQUEST OF

Altair Minerals, Inc.

2006 SEP 18 PM 12 20

LINCOLN COUNTY RECORDER
FEE 15400 DEPA
LESLIE BOUCHER

LOCATED ON:
SEPTEMBER 1, 2006
AFTER 12 NOON



APPROXIMATELY 2550 FT.
@ N37°E FROM THE
NW CORNER OF T.1S, R.68E
SECTION 4, NE CORNER
TO THE NE CORNER
OF WL9-1 CLAIM

LOCATOR-OWNER:
ALTAIR MINERALS, INC.
1611 BRADLEY DR.
EUGENE, OREGON
97401

APPROXIMATE
LOCATION OF
SECTION 7
CORNER 5 4
T.1N R.68E
T.1S

ALL CORNERS AND THE LOCATION
MONUMENT ARE 2" X 2"
WOODEN POSTS WITH METAL
TAGS AND FLAGGING.