

CLAIM MAP

127424

WL1 - WL10

LINCOLN COUNTY, NEVADA

T.1N, R.68E

SECTION 33

M.D.B. & M.

FILED FOR RECORDING
AT THE REQUEST OF

Altair Minerals, Inc.

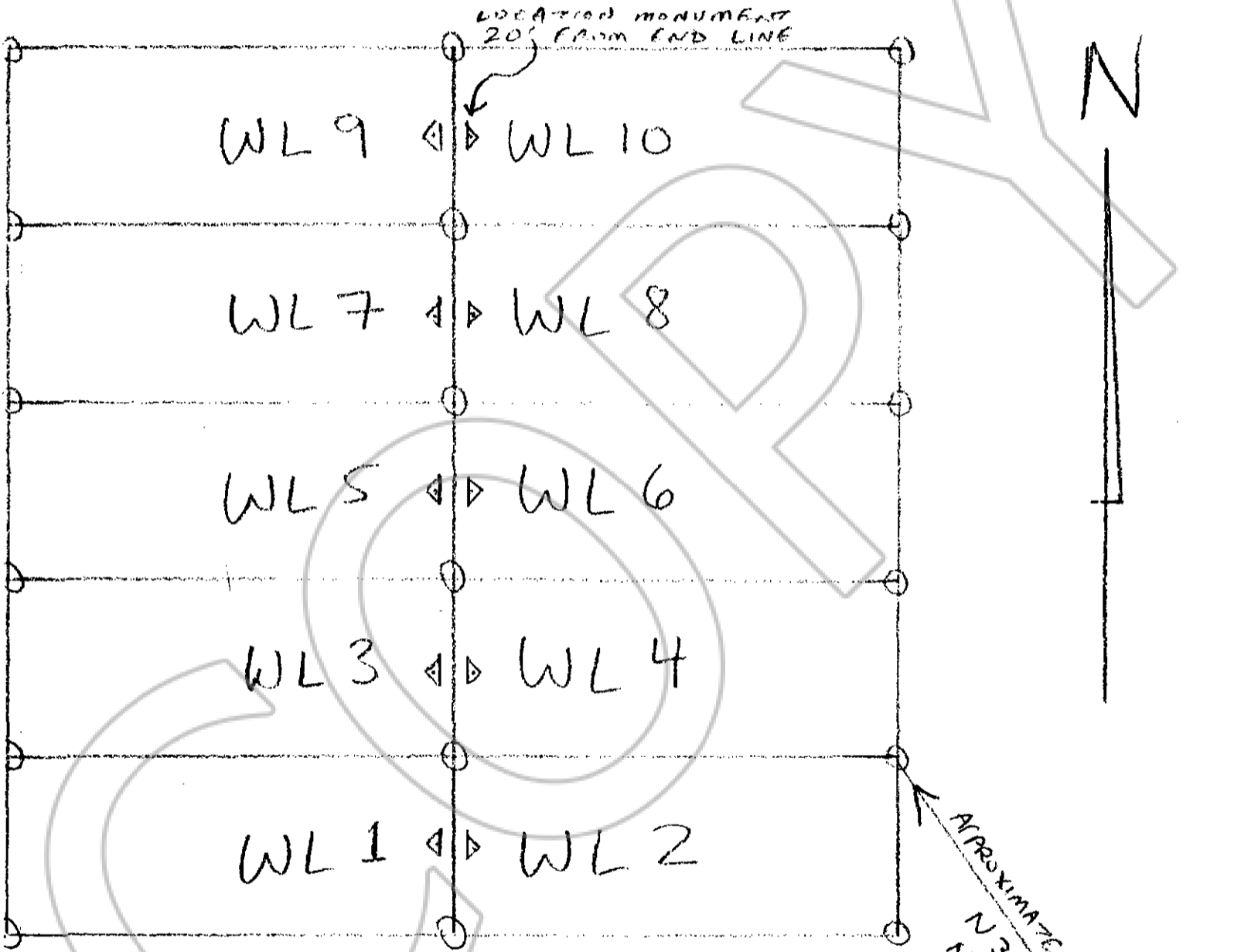
2006 SEP 18 PM 12 19

LINCOLN COUNTY RECORDER
FEE \$54.00
LESLIE BOUCHER

LOCATED ON:

SEPTEMBER 1, 2006
AFTER 12 NOON

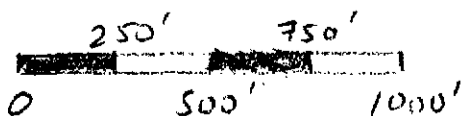
ALL CORNER & LOCATION MONUMENTS ARE 2" x 2"
WOODEN POSTS WITH METAL TAGS & FLAGGING.



LOCATOR-OWNER:

ALTAIR MINERALS, INC.
1611 BRADLEY DRIVE
EUGENE, OREGON
97401

R68E T.1N
T.1S



APPROXIMATE LOCATION
OF SECTION
CORNER

BOOK 222 PAGE 437