

LS1-LS34 CLAIM MAP

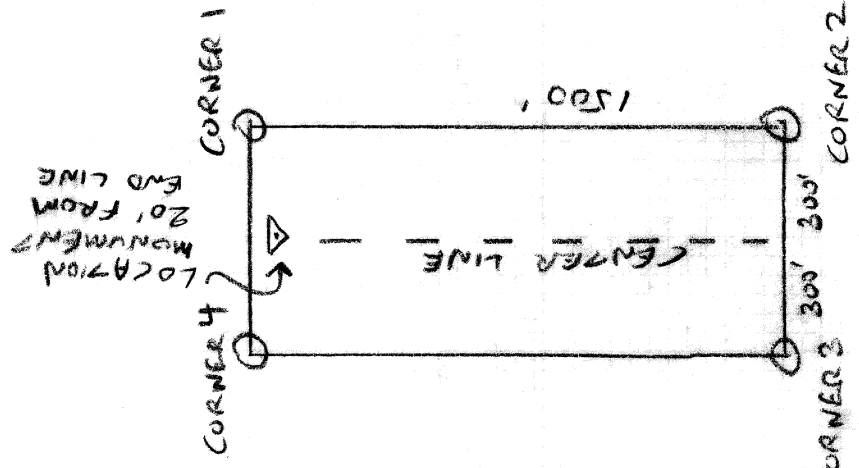
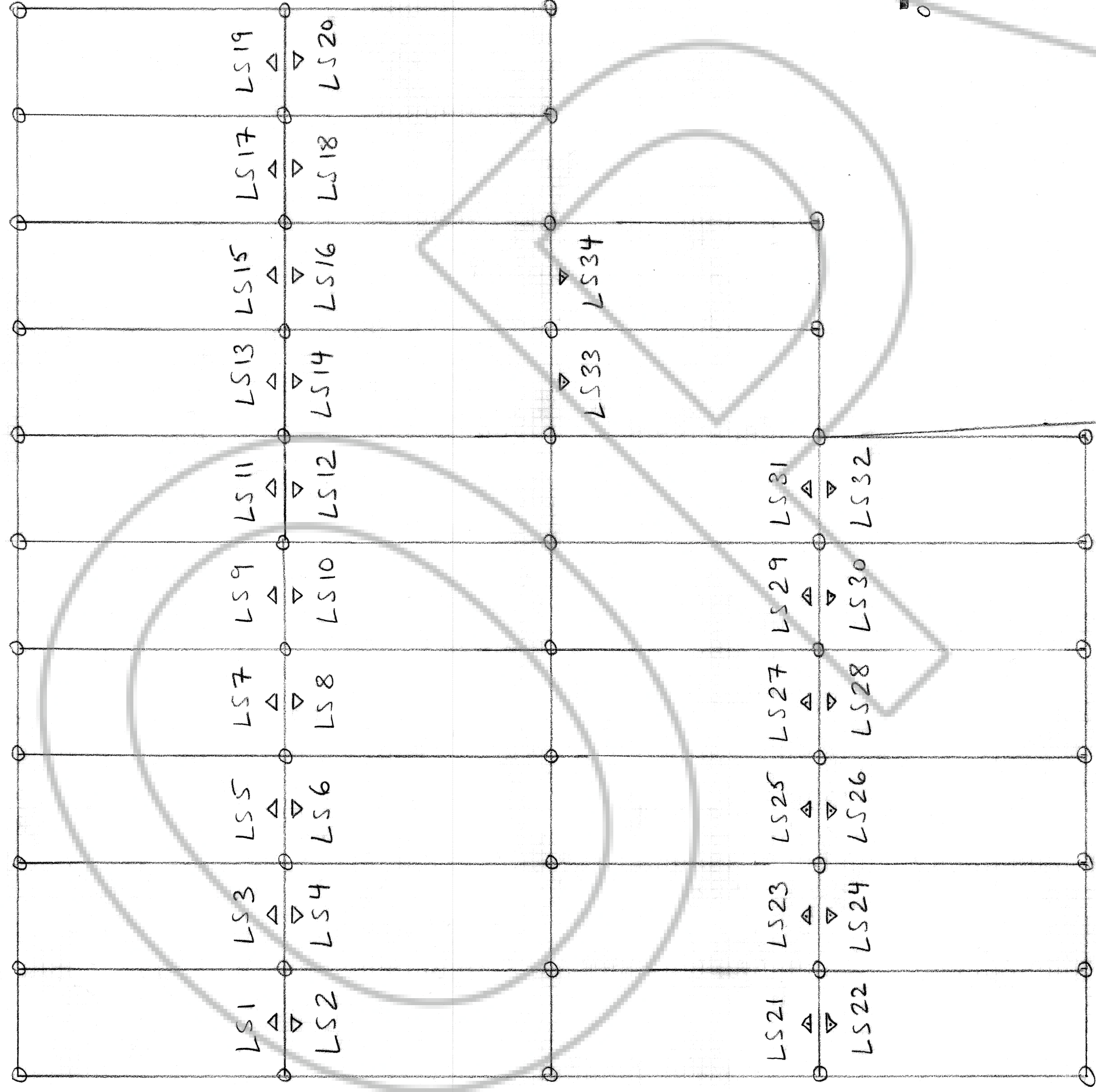
LINCOLN COUNTY, NEVADA

T.2N, R.61E, SECTIONS 27, 28, 33

M.D. B. & M.

LOCATOR - OWNER:
ALTAIR MINERALS, INC.
1611 BRADLEY DRIVE
EUGENE, OREGON 97401

LOCATED ON:
SEPTEMBER 1, 2006
AFTER 12 NOON



ALL CORNERS AND LOCATION MONUMENT ARE 2" X 2" WOODEN POLES WITH METAL TIES + FLAGGING.

APPROXIMATELY 5600 FT @ N3°W FROM THE SE CORNER OF SECTION 33, T.2N, R.61E TO THE NE CORNER OF LS32 CLAIM.

APPROXIMATE LOCATION OF SECTION CORNER
 $\frac{33}{4} \frac{34}{3}$ --- T.2N R.61E
 T.1N

LS7378
 MAP AND RECORD AT REGISTERED
 ALTAIR MINERALS, INC.
 24th 18 2006
 13 MINNESOTA 11 COLON
 14 IN BOOK 322 OF OFFICIAL
 COUNTY, NEVADA
 50005 FASE 513 - UNCLER
 Joshua Boshart