

127282

FILED FOR RECORDING
AT THE REQUEST OF

CORNER RECORD

Sec. 15-22, 27-30, 33&34
Twn. 11 S.
Rng. 63 E.
M.D.M.

Artisan Land Survey

2006 SEP -7 PM 3 38

LINCOLN COUNTY RECORDED
FEE \$34.00 SEP
LESLIE BOUCHER WD

SURVEYOR'S CERTIFICATE

Sheet 1 of 21

I, Timothy J. Wolf, a Professional Land Surveyor registered in the State of Nevada, certify that:

- 1) This corner record represents the establishment or restoration of a corner or accessory to a corner conducted under my direct supervision.
- 2) The monument or accessories perpetuated lie within Section(s) ^{15-22, 27-30,} 33&34, Township 11 South, Range 63 East, Mount Diablo Meridian, Lincoln County, Nevada, and the establishment or restoration was completed in June & July, 2006.
- 3) This corner record has been filed pursuant to N.R.S. 329.140 or N.R.S. 329.150 and complies with the provisions of Nevada Administrative Code Section 329 and any local ordinances in effect on the date that the establishment or restoration was completed.
- 4) The monument or witness corner monument and accessories found are of the character shown, occupy the positions indicated and are of sufficient durability.

RETURN TO:
Artisan Land Survey, Inc.
P.O. Box 35381
Las Vegas, NV 89133
(702) 233-3451

Art

Timothy J. Wolf
Professional Land Surveyor
Nevada Certificate No. 9677
Agent for Artisan Land Survey, Inc.

Sec. 19/20
Twn. 11 S.
Rng. 63 E.
M.D.M.

CORNER RECORD

Sheet 2 of 21

MONUMENTS

ARTISAN L.S.
GEODETIC "WHERE ART & MEASUREMENT SCIENCE CONVERGE"
NORTH

PRIMARY CONTROL

SET 1.5" DIA. ALUMINUM
MONUMENT AS SHOWN
LAT: 36°58'09.25641"N
LON: 114°57'43.12919"W

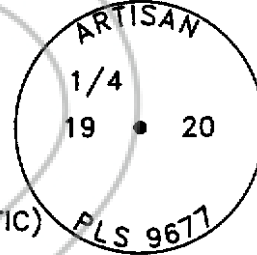


SET 1.5" DIA. ALUMINUM
MONUMENT AS SHOWN
LAT: 36°58'50.03275"N
LON: 114°55'54.99535"W



PERPETUATED
MONUMENT

FOUND EVIDENCE AS SHOWN,
SET 1.5" DIA. ALUMINUM
MONUMENT AS SHOWN
LAT: 36°58'36.18168"N
LON: 114°57'38.62993"W
(MINIMUM OF 15-MINUTES STATIC)



DATUM

CP'S KANA AND KANB WERE
ESTABLISHED USING NGS' OPUS
WITH 24-HOURS± OF STATIC
DATA, NGS NAD83 (2002).
[HTTP://WWW.NGS.NOAA.GOV/OPUS](http://www.ngs.noaa.gov/opus)



REFERENCES

11/8/1881 APPROVED ORIGINAL SURVEY & FIELD NOTES BY W.S. DAVIS, SURVEYOR GENERAL NEVADA

Art Artisan Land Survey, Inc.
"Where Art & Measurement Science Converge"

Sec. 17/18/19/20
Twn. 11 S.
Rng. 63 E.
M.D.M.

CORNER RECORD

Sheet 3 of 21

MONUMENTS

ARTISAN L.S.
GEODETTIC "WHERE ART & MEASUREMENT SCIENCE CONVERGE"
NORTH

PRIMARY CONTROL

SET 1.5" DIA. ALUMINUM
MONUMENT AS SHOWN
LAT: 36°58'09.25641"N
LON: 114°57'43.12919"W

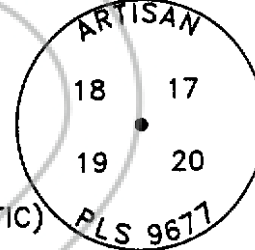


SET 1.5" DIA. ALUMINUM
MONUMENT AS SHOWN
LAT: 36°58'50.03275"N
LON: 114°55'54.99535"W



PERPETUATED
MONUMENT

FOUND EVIDENCE AS SHOWN,
SET 1.5" DIA. ALUMINUM
MONUMENT AS SHOWN
LAT: 36°59'01.96734"N
LON: 114°57'38.97835"W
(MINIMUM OF 15-MINUTES STATIC)



DATUM

CP'S KANA AND KANB WERE
ESTABLISHED USING NGS' OPUS
WITH 24-HOURS± OF STATIC
DATA, NGS NAD83 (2002).
[HTTP://WWW.NGS.NOAA.GOV/OPUS](http://www.ngs.noaa.gov/opus)



REFERENCES

11/8/1881 APPROVED ORIGINAL SURVEY & FIELD NOTES BY W.S. DAVIS, SURVEYOR GENERAL NEVADA

Art Artisan Land Survey, Inc.
"Where Art & Measurement Science Converge"

Sec. 17/18
Twn. 11 S.
Rng. 63 E.
M.D.M.

CORNER RECORD

Sheet 4 of 21

MONUMENTS

ARTISAN L.S.
"WHERE ART & MEASUREMENT SCIENCE CONVERGE"
GEODETTIC NORTH

PRIMARY CONTROL

SET 1.5" DIA. ALUMINUM
MONUMENT AS SHOWN
LAT: 36°58'09.25641"N
LON: 114°57'43.12919"W

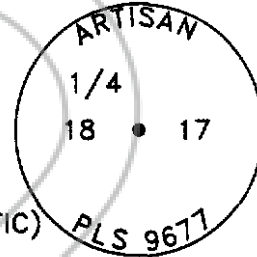


SET 1.5" DIA. ALUMINUM
MONUMENT AS SHOWN
LAT: 36°58'50.03275"N
LON: 114°55'54.99535"W



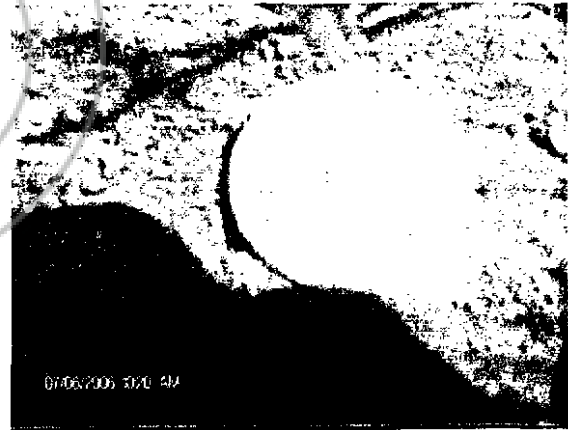
PERPETUATED MONUMENT

FOUND EVIDENCE AS SHOWN,
SET 1.5" DIA. ALUMINUM
MONUMENT AS SHOWN
LAT: 36°59'27.86229"N
LON: 114°57'38.63594"W
(MINIMUM OF 15-MINUTES STATIC)



DATUM

CP'S KANA AND KANB WERE
ESTABLISHED USING NGS' OPUS
WITH 24-HOURS± OF STATIC
DATA, NGS NAD83 (2002).
[HTTP://WWW.NGS.NOAA.GOV/OPUS](http://www.ngs.noaa.gov/opus)



REFERENCES

11/8/1881 APPROVED ORIGINAL SURVEY & FIELD NOTES BY W.S. DAVIS, SURVEYOR GENERAL NEVADA

Art Artisan Land Survey, Inc.
"Where Art & Measurement Science Converge"

Sec. 17/16
Twn. 11 S.
Rng. 63 E.
M.D.M.

CORNER RECORD

Sheet 5 of 21

MONUMENTS

ARTISAN L.S.
"WHERE ART & MEASUREMENT SCIENCE CONVERGE"
GEODETTIC NORTH

PERPETUATED
MONUMENT
PRIMARY CONTROL

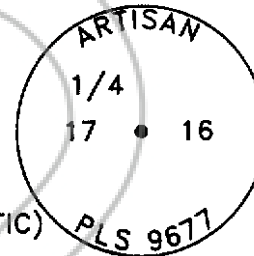
SET 1.5" DIA. ALUMINUM
MONUMENT AS SHOWN
LAT: 36°58'09.25641"N
LON: 114°57'43.12919"W



SET 1.5" DIA. ALUMINUM
MONUMENT AS SHOWN
LAT: 36°58'50.03275"N
LON: 114°55'54.99535"W

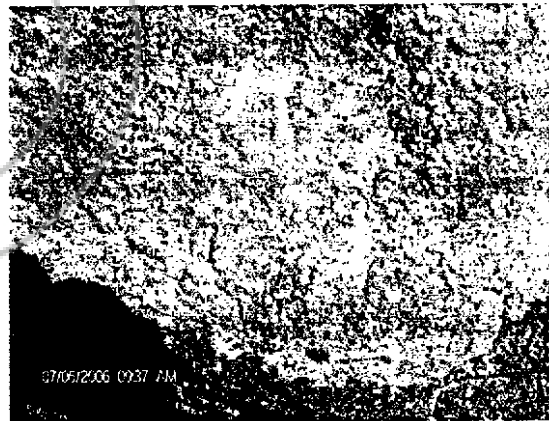


FOUND EVIDENCE AS SHOWN,
SET 1.5" DIA. ALUMINUM
MONUMENT AS SHOWN
LAT: 36°59'29.67588"N
LON: 114°56'35.54407"W
(MINIMUM OF 15-MINUTES STATIC)



DATUM

CP'S KANA AND KANB WERE
ESTABLISHED USING NGS' OPUS
WITH 24-HOURS± OF STATIC
DATA, NGS NAD83 (2002).
[HTTP://WWW.NGS.NOAA.GOV/OPUS](http://www.ngs.noaa.gov/opus)



REFERENCES

11/8/1881 APPROVED ORIGINAL SURVEY & FIELD NOTES BY W.S. DAVIS, SURVEYOR GENERAL NEVADA

Art Artisan Land Survey, Inc.
"Where Art & Measurement Science Converge"

Sec. 20/21
Twn. 11 S.
Rng. 63 E.
M.D.M.

CORNER RECORD

Sheet 6 of 21

MONUMENTS

ARTISAN L.S.
"WHERE ART & MEASUREMENT SCIENCE CONVERGE"
GEODETIC NORTH

PRIMARY CONTROL

SET 1.5" DIA. ALUMINUM
MONUMENT AS SHOWN
LAT: 36°58'09.25641"N
LON: 114°57'43.12919"W

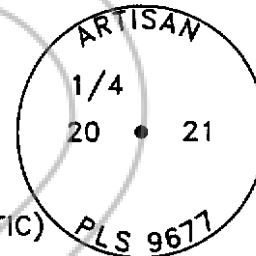


SET 1.5" DIA. ALUMINUM
MONUMENT AS SHOWN
LAT: 36°58'50.03275"N
LON: 114°55'54.99535"W



PERPETUATED
MONUMENT

FOUND EVIDENCE AS SHOWN,
SET 1.5" DIA. ALUMINUM
MONUMENT AS SHOWN
LAT: 36°58'37.67581"N
LON: 114°56'34.93098"W
(MINIMUM OF 15-MINUTES STATIC)



DATUM



CP'S KANA AND KANB WERE
ESTABLISHED USING NGS' OPUS
WITH 24-HOURS± OF STATIC
DATA, NGS NAD83 (2002).
[HTTP://WWW.NGS.NOAA.GOV/OPUS](http://www.ngs.noaa.gov/opus)



REFERENCES

11/8/1881 APPROVED ORIGINAL SURVEY & FIELD NOTES BY W.S. DAVIS, SURVEYOR GENERAL NEVADA

Art Artisan Land Survey, Inc.
"Where Art & Measurement Science Converge"

Sec. 20/21/29/28
Twn. 11 S.
Rng. 63 E.
M.D.M.

CORNER RECORD

Sheet 7 of 21

MONUMENTS

ARTISAN L.S.
"WHERE ART & MEASUREMENT SCIENCE CONVERGE"
GEODETTIC NORTH

PERPETUATED
MONUMENT

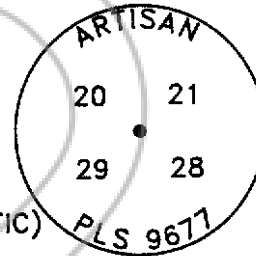
SET 1.5" DIA. ALUMINUM
MONUMENT AS SHOWN
LAT: 36°58'09.25641"N
LON: 114°57'43.12919"W



SET 1.5" DIA. ALUMINUM
MONUMENT AS SHOWN
LAT: 36°58'50.03275"N
LON: 114°55'54.99535"W



FOUND EVIDENCE AS SHOWN,
SET 1.5" DIA. ALUMINUM
MONUMENT AS SHOWN
LAT: 36°58'11.49438"N
LON: 114°56'34.38321"W
(MINIMUM OF 15-MINUTES STATIC)



DATUM

CP'S KANA AND KANB WERE
ESTABLISHED USING NGS' OPUS
WITH 24-HOURS± OF STATIC
DATA, NGS NAD83 (2002).
[HTTP://WWW.NGS.NOAA.GOV/OPUS](http://www.ngs.noaa.gov/opus)



REFERENCES

11/8/1881 APPROVED ORIGINAL SURVEY & FIELD NOTES BY W.S. DAVIS, SURVEYOR GENERAL NEVADA

Art Artisan Land Survey, Inc.
"Where Art & Measurement Science Converge"

Sec. 29/28
Twn. 11 S.
Rng. 63 E.
M.D.M.

CORNER RECORD

Sheet 8 of 21

MONUMENTS

ARTISAN L.S.
"WHERE ART & MEASUREMENT SCIENCE CONVERGE"
GEODETTIC
NORTH

PERPETUATED
MONUMENT
PRIMARY CONTROL

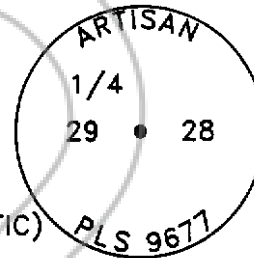
SET 1.5" DIA. ALUMINUM
MONUMENT AS SHOWN
LAT: 36°58'09.25641"N
LON: 114°57'43.12919"W



SET 1.5" DIA. ALUMINUM
MONUMENT AS SHOWN
LAT: 36°58'50.03275"N
LON: 114°55'54.99535"W



FOUND EVIDENCE AS SHOWN,
SET 1.5" DIA. ALUMINUM
MONUMENT AS SHOWN
LAT: 36°57'45.30478"N
LON: 114°56'34.32794"W
(MINIMUM OF 15-MINUTES STATIC)



DATUM

CP'S KANA AND KANB WERE
ESTABLISHED USING NGS' OPUS
WITH 24-HOURS± OF STATIC
DATA, NGS NAD83 (2002).
[HTTP://WWW.NGS.NOAA.GOV/OPUS](http://www.ngs.noaa.gov/opus)



REFERENCES

11/8/1881 APPROVED ORIGINAL SURVEY & FIELD NOTES BY W.S. DAVIS, SURVEYOR GENERAL NEVADA

Art Artisan Land Survey, Inc.
"Where Art & Measurement Science Converge"

Sec. 29/28/32/33
Twn. 11 S.
Rng. 63 E.
M.D.M.

CORNER RECORD

Sheet 9 of 21

MONUMENTS

ARTISAN I.S.
"WHERE ART & MEASUREMENT SCIENCE CONVERGE"
GEODETTIC
NORTH

PERPETUATED
MONUMENT
PRIMARY CONTROL

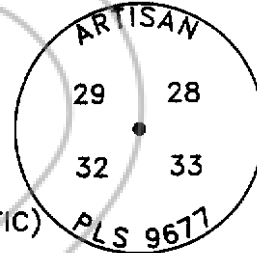
SET 1.5" DIA. ALUMINUM
MONUMENT AS SHOWN
LAT: 36°58'09.25641"N
LON: 114°57'43.12919"W



SET 1.5" DIA. ALUMINUM
MONUMENT AS SHOWN
LAT: 36°58'50.03275"N
LON: 114°55'54.99535"W

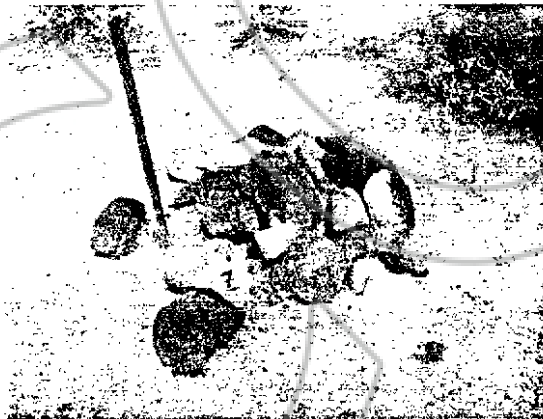


FOUND EVIDENCE AS SHOWN,
SET 1.5" DIA. ALUMINUM
MONUMENT AS SHOWN
LAT: 36°57'19.05003"N
LON: 114°56'34.27509"W
(MINIMUM OF 15-MINUTES STATIC)



DATUM

CP'S KANA AND KANB WERE
ESTABLISHED USING NGS' OPUS
WITH 24-HOURS± OF STATIC
DATA, NGS NAD83 (2002).
[HTTP://WWW.NGS.NOAA.GOV/OPUS](http://www.ngs.noaa.gov/opus)



REFERENCES

11/8/1881 APPROVED ORIGINAL SURVEY & FIELD NOTES BY W.S. DAVIS, SURVEYOR GENERAL NEVADA

Art Artisan Land Survey, Inc.
"Where Art & Measurement Science Converge"

Sec. 33/34
Twn. 11 S.
Rng. 63 E.
M.D.M.

CORNER RECORD

Sheet 10 of 21

MONUMENTS

ARTISAN L.S.
"WHERE ART & MEASUREMENT SCIENCE CONVERGE"
GEODETTIC NORTH

PERPETUATED
MONUMENT
PRIMARY CONTROL

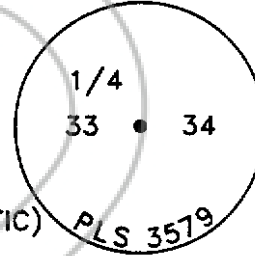
SET 1.5" DIA. ALUMINUM
MONUMENT AS SHOWN
LAT: 36°58'09.25641"N
LON: 114°57'43.12919"W



SET 1.5" DIA. ALUMINUM
MONUMENT AS SHOWN
LAT: 36°58'50.03275"N
LON: 114°55'54.99535"W

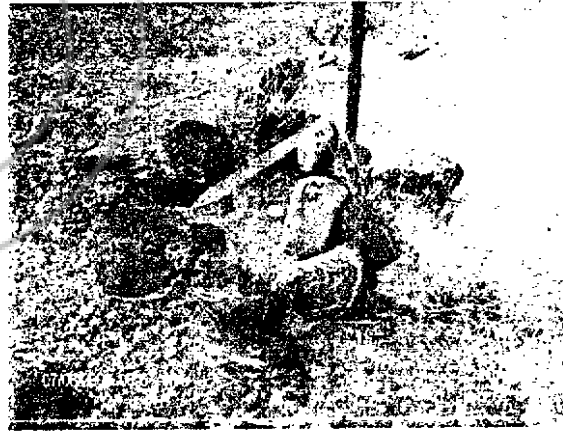
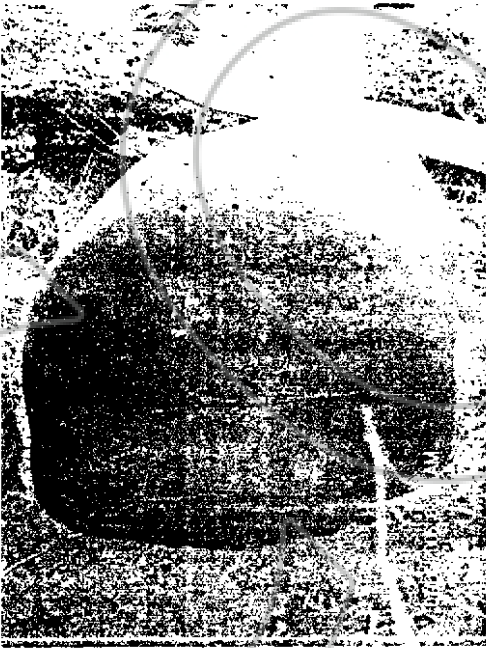


FOUND EVIDENCE AS SHOWN,
FOUND 1.5" DIA. ALUMINUM
MONUMENT AS SHOWN
LAT: 36°56'53.23939"N
LON: 114°55'28.70915"W
(MINIMUM OF 15-MINUTES STATIC)



DATUM

CP'S KANA AND KANB WERE
ESTABLISHED USING NGS' OPUS
WITH 24-HOURS± OF STATIC
DATA, NGS NAD83 (2002).
[HTTP://WWW.NGS.NOAA.GOV/OPUS](http://www.ngs.noaa.gov/opus)



REFERENCES

11/8/1881 APPROVED ORIGINAL SURVEY & FIELD NOTES BY W.S. DAVIS, SURVEYOR GENERAL NEVADA

Art Artisan Land Survey, Inc.
"Where Art & Measurement Science Converge"

Sec. 27/34
Twn. 11 S.
Rng. 63 E.
M.D.M.

CORNER RECORD

Sheet 11 of 21

MONUMENTS

ARTISAN L.S.
GEODETTIC "WHERE ART & MEASUREMENT SCIENCE CONVERGE"
NORTH

PRIMARY CONTROL

SET 1.5" DIA. ALUMINUM
MONUMENT AS SHOWN
LAT: 36°58'09.25641"N
LON: 114°57'43.12919"W

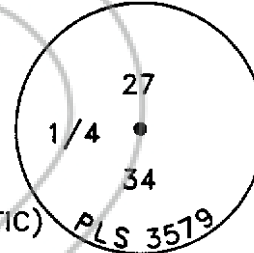


SET 1.5" DIA. ALUMINUM
MONUMENT AS SHOWN
LAT: 36°58'50.03275"N
LON: 114°55'54.99535"W



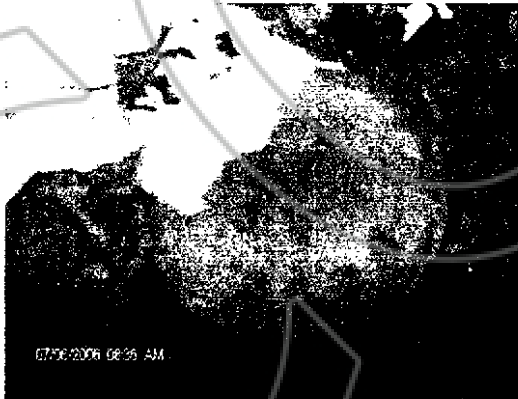
PERPETUATED
MONUMENT

FOUND EVIDENCE AS SHOWN,
FOUND 1.5" DIA. ALUMINUM
MONUMENT AS SHOWN
LAT: 36°57'19.55155"N
LON: 114°54'55.85732"W
(MINIMUM OF 15-MINUTES STATIC)



DATUM

CP'S KANA AND KANB WERE
ESTABLISHED USING NGS' OPUS
WITH 24-HOURS± OF STATIC
DATA, NGS NAD83 (2002).
[HTTP://WWW.NGS.NOAA.GOV/OPUS](http://www.ngs.noaa.gov/opus)



REFERENCES

11/8/1881 APPROVED ORIGINAL SURVEY & FIELD NOTES BY W.S. DAVIS, SURVEYOR GENERAL NEVADA

Art Artisan Land Survey, Inc.
"Where Art & Measurement Science Converge"

Sec. 28/33
Twn. 11 S.
Rng. 63 E.
M.D.M.

CORNER RECORD

Sheet 12 of 21

MONUMENTS

ARTISAN L.S.
GEODETIC "WHERE ART & MEASUREMENT SCIENCE CONVERGE"
NORTH

PERPETUATED
MONUMENT
PRIMARY CONTROL

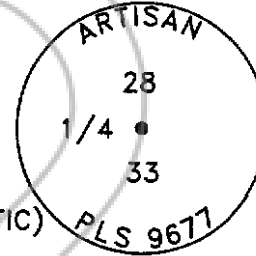
SET 1.5" DIA. ALUMINUM
MONUMENT AS SHOWN
LAT: 36°58'09.25641"N
LON: 114°57'43.12919"W



SET 1.5" DIA. ALUMINUM
MONUMENT AS SHOWN
LAT: 36°58'50.03275"N
LON: 114°55'54.99535"W



FOUND EVIDENCE AS SHOWN,
SET 1.5" DIA. ALUMINUM
MONUMENT AS SHOWN
LAT: 36°57'19.21037"N
LON: 114°56'01.74140"W
(MINIMUM OF 15-MINUTES STATIC)



DATUM

CP'S KANA AND KANB WERE
ESTABLISHED USING NGS' OPUS
WITH 24-HOURS± OF STATIC
DATA, NGS NAD83 (2002).
[HTTP://WWW.NGS.NOAA.GOV/OPUS](http://www.ngs.noaa.gov/opus)



REFERENCES

11/8/1881 APPROVED ORIGINAL SURVEY & FIELD NOTES BY W.S. DAVIS, SURVEYOR GENERAL NEVADA

Art Artisan Land Survey, Inc.
"Where Art & Measurement Science Converge"

Sec. 28/27
Twn. 11 S.
Rng. 63 E.
M.D.M.

CORNER RECORD

Sheet 13 of 21

MONUMENTS

ARTISAN L.S.
GEODETTIC "WHERE ART & MEASUREMENT SCIENCE CONVERGE"
NORTH

PERPETUATED
PRIMARY CONTROL

SET 1.5" DIA. ALUMINUM
MONUMENT AS SHOWN
LAT: 36°58'09.25641"N
LON: 114°57'43.12919"W

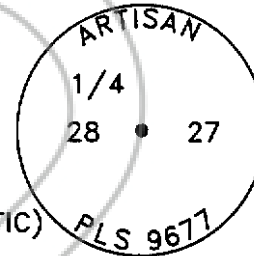


SET 1.5" DIA. ALUMINUM
MONUMENT AS SHOWN
LAT: 36°58'50.03275"N
LON: 114°55'54.99535"W



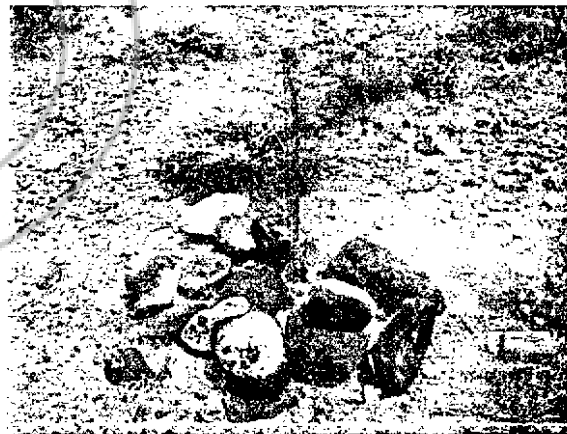
PERPETUATED
MONUMENT

FOUND REBAR & EVIDENCE,
SET 1.5" DIA. ALUMINUM
MONUMENT AS SHOWN
LAT: 36°57'45.76172"N
LON: 114°55'28.76450"W
(MINIMUM OF 15-MINUTES STATIC)



DATUM

CP'S KANA AND KANB WERE
ESTABLISHED USING NGS' OPUS
WITH 24-HOURS± OF STATIC
DATA, NGS NAD83 (2002).
[HTTP://WWW.NGS.NOAA.GOV/OPUS](http://www.ngs.noaa.gov/opus)



REFERENCES

11/8/1881 APPROVED ORIGINAL SURVEY & FIELD NOTES BY W.S. DAVIS, SURVEYOR GENERAL NEVADA

Art Artisan Land Survey, Inc.
"Where Art & Measurement Science Converge"

Sec. 21/22/28/27
Twn. 11 S.
Rng. 63 E.
M.D.M.

CORNER RECORD

Sheet 14 of 21

MONUMENTS

ARTISAN L.S.
GEODETTIC "WHERE ART & MEASUREMENT SCIENCE CONVERGE"
NORTH

PERPETUATED
MONUMENT
PRIMARY CONTROL

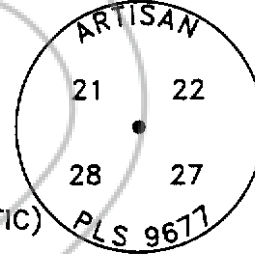
SET 1.5" DIA. ALUMINUM
MONUMENT AS SHOWN
LAT: 36°58'09.25641"N
LON: 114°57'43.12919"W



SET 1.5" DIA. ALUMINUM
MONUMENT AS SHOWN
LAT: 36°58'50.03275"N
LON: 114°55'54.99535"W

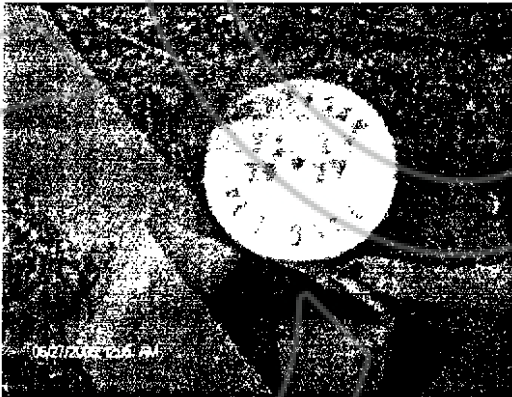


FOUND REBAR & EVIDENCE,
SET 1.5" DIA. ALUMINUM
MONUMENT AS SHOWN
LAT: 36°58'12.08430"N
LON: 114°55'28.75033"W
(MINIMUM OF 15-MINUTES STATIC)



DATUM

CP'S KANA AND KANB WERE
ESTABLISHED USING NGS' OPUS
WITH 24-HOURS± OF STATIC
DATA, NGS NAD83 (2002).
[HTTP://WWW.NGS.NOAA.GOV/OPUS](http://www.ngs.noaa.gov/opus)



REFERENCES

11/8/1881 APPROVED ORIGINAL SURVEY & FIELD NOTES BY W.S. DAVIS, SURVEYOR GENERAL NEVADA

Art Artisan Land Survey, Inc.
"Where Art & Measurement Science Converge"

Sec. 21 / 22
Twn. 11 S.
Rng. 63 E.
M.D.M.

CORNER RECORD

Sheet 15 of 21

MONUMENTS

ARTISAN L.S.
"WHERE ART & MEASUREMENT SCIENCE CONVERGE"
GEODETIC
NORTH

PERPETUATED
PRIMARY CONTROL
MONUMENT

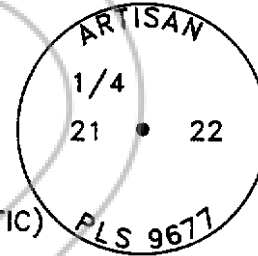
SET 1.5" DIA. ALUMINUM
MONUMENT AS SHOWN
LAT: 36°58'09.25641"N
LON: 114°57'43.12919"W



SET 1.5" DIA. ALUMINUM
MONUMENT AS SHOWN
LAT: 36°58'50.03275"N
LON: 114°55'54.99535"W



FOUND EVIDENCE AS SHOWN,
SET 1.5" DIA. ALUMINUM
MONUMENT AS SHOWN
LAT: 36°58'38.40508"N
LON: 114°55'28.75053"W
(MINIMUM OF 15-MINUTES STATIC)



DATUM

CP'S KANA AND KANB WERE
ESTABLISHED USING NGS' OPUS
WITH 24-HOURS± OF STATIC
DATA, NGS NAD83 (2002).
[HTTP://WWW.NGS.NOAA.GOV/OPUS](http://www.ngs.noaa.gov/opus)



REFERENCES

11/8/1881 APPROVED ORIGINAL SURVEY & FIELD NOTES BY W.S. DAVIS, SURVEYOR GENERAL NEVADA

Art Artisan Land Survey, Inc.
"Where Art & Measurement Science Converge"

Sec. 16/15/21/22
Twn. 11 S.
Rng. 63 E.
M.D.M.

CORNER RECORD

Sheet 16 of 21

MONUMENTS

ARTISAN L.S.
GEODETTIC "WHERE ART & MEASUREMENT SCIENCE CONVERGE"
NORTH

PERPETUATED
MONUMENT
PRIMARY CONTROL

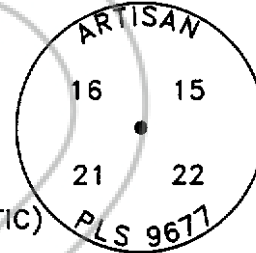
SET 1.5" DIA. ALUMINUM
MONUMENT AS SHOWN
LAT: 36°58'09.25641"N
LON: 114°57'43.12919"W



SET 1.5" DIA. ALUMINUM
MONUMENT AS SHOWN
LAT: 36°58'50.03275"N
LON: 114°55'54.99535"W



FOUND REBAR & EVIDENCE,
SET 1.5" DIA. ALUMINUM
MONUMENT AS SHOWN
LAT: 36°59'04.67862"N
LON: 114°55'28.81427"W
(MINIMUM OF 15-MINUTES STATIC)



DATUM



CP'S KANA AND KANB WERE
ESTABLISHED USING NGS' OPUS
WITH 24-HOURS± OF STATIC
DATA, NGS NAD83 (2002).
[HTTP://WWW.NGS.NOAA.GOV/OPUS](http://www.ngs.noaa.gov/opus)



CORREGATED POST & REBAR

REFERENCES

11/8/1881 APPROVED ORIGINAL SURVEY & FIELD NOTES BY W.S. DAVIS, SURVEYOR GENERAL NEVADA

Art Artisan Land Survey, Inc.
"Where Art & Measurement Science Converge"

Sec. 19/20/30/29
Twn. 11 S.
Rng. 63 E.
M.D.M.

CORNER RECORD

Sheet 17 of 21

MONUMENTS

ARTISAN L.S.
GEODETTIC "WHERE ART & MEASUREMENT SCIENCE CONVERGE"
NORTH

PERPETUATED
MONUMENT
PRIMARY CONTROL

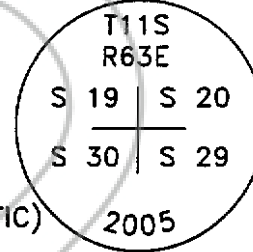
SET 1.5" DIA. ALUMINUM
MONUMENT AS SHOWN
LAT: 36°58'09.25641"N
LON: 114°57'43.12919"W



SET 1.5" DIA. ALUMINUM
MONUMENT AS SHOWN
LAT: 36°58'50.03275"N
LON: 114°55'54.99535"W



FOUND BLM BRASS
MONUMENT "2005"
SEE PHOTOS
LAT: 36°58'10.71464"N
LON: 114°57'39.16929"W
(MINIMUM OF 15-MINUTES STATIC)



DATUM

CP'S KANA AND KANB WERE
ESTABLISHED USING NGS' OPUS
WITH 24-HOURS± OF STATIC
DATA, NGS NAD83 (2002).
[HTTP://WWW.NGS.NOAA.GOV/OPUS](http://www.ngs.noaa.gov/opus)



REFERENCES

11/8/1881 APPROVED ORIGINAL SURVEY & FIELD NOTES BY W.S. DAVIS, SURVEYOR GENERAL NEVADA

Art Artisan Land Survey, Inc.
"Where Art & Measurement Science Converge"

Sec. 19/30
Twn. 11 S.
Rng. 63 E.
M.D.M.

CORNER RECORD

Sheet 18 of 21

MONUMENTS

ARTISAN I.S.
"WHERE ART & MEASUREMENT SCIENCE CONVERGE"
GEODETTIC
NORTH

PERPETUATED
MONUMENT
PRIMARY CONTROL

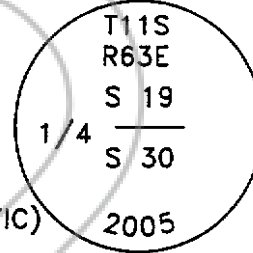
SET 1.5" DIA. ALUMINUM
MONUMENT AS SHOWN
LAT: 36°58'09.25641"N
LON: 114°57'43.12919"W



SET 1.5" DIA. ALUMINUM
MONUMENT AS SHOWN
LAT: 36°58'50.03275"N
LON: 114°55'54.99535"W



FOUND BLM BRASS
MONUMENT "2005"
SEE PHOTOS
LAT: 36°58'11.29710"N
LON: 114°58'10.46196"W
(MINIMUM OF 15-MINUTES STATIC)



DATUM

CP'S KANA AND KANB WERE
ESTABLISHED USING NGS' OPUS
WITH 24-HOURS± OF STATIC
DATA, NGS NAD83 (2002).
[HTTP://WWW.NGS.NOAA.GOV/OPUS](http://www.ngs.noaa.gov/opus)



REFERENCES

11/8/1881 APPROVED ORIGINAL SURVEY & FIELD NOTES BY W.S. DAVIS, SURVEYOR GENERAL NEVADA

Art Artisan Land Survey, Inc.
"Where Art & Measurement Science Converge"

Sec. 24/25/19/30
Twn. 11 S.
Rng. 62 & 63 E.
M.D.M.

CORNER RECORD

Sheet 19 of 21

MONUMENTS

ARTISAN L.S.
GEODETTIC "WHERE ART & MEASUREMENT SCIENCE CONVERGE"
NORTH

PRIMARY CONTROL

SET 1.5" DIA. ALUMINUM
MONUMENT AS SHOWN
LAT: 36°58'09.25641"N
LON: 114°57'43.12919"W

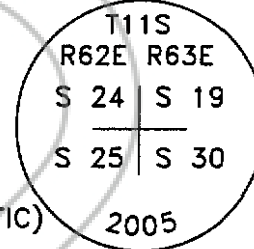


SET 1.5" DIA. ALUMINUM
MONUMENT AS SHOWN
LAT: 36°58'50.03275"N
LON: 114°55'54.99535"W



PERPETUATED
MONUMENT

FOUND BLM BRASS
MONUMENT "2005"
SEE PHOTOS
LAT: 36°58'11.81158"N
LON: 114°58'43.05602"W
(MINIMUM OF 15-MINUTES STATIC)



DATUM

CP'S KANA AND KANB WERE
ESTABLISHED USING NGS' OPUS
WITH 24-HOURS± OF STATIC
DATA, NGS NAD83 (2002).
[HTTP://WWW.NGS.NOAA.GOV/OPUS](http://www.ngs.noaa.gov/opus)



REFERENCES

11/8/1881 APPROVED ORIGINAL SURVEY & FIELD NOTES BY W.S. DAVIS, SURVEYOR GENERAL NEVADA

Art Artisan Land Survey, Inc.
"Where Art & Measurement Science Converge"

Sec. 24/19
Twn. 11 S.
Rng. 62 & 63 E.
M.D.M.

CORNER RECORD

Sheet 20 of 21

MONUMENTS

ARTISAN L.S.
"WHERE ART & MEASUREMENT SCIENCE CONVERGE"
GEODETIC NORTH

PRIMARY CONTROL

SET 1.5" DIA. ALUMINUM
MONUMENT AS SHOWN
LAT: 36°58'09.25641"N
LON: 114°57'43.12919"W

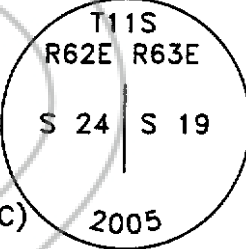


SET 1.5" DIA. ALUMINUM
MONUMENT AS SHOWN
LAT: 36°58'50.03275"N
LON: 114°55'54.99535"W



PERPETUATED MONUMENT

FOUND BLM BRASS
MONUMENT "2005"
SEE PHOTOS
LAT: 36°58'38.07014"N
LON: 114°58'43.08417"W
(MINIMUM OF 15-MINUTES STATIC)



DATUM

CP'S KANA AND KANB WERE
ESTABLISHED USING NGS' OPUS
WITH 24-HOURS± OF STATIC
DATA, NGS NAD83 (2002).
[HTTP://WWW.NGS.NOAA.GOV/OPUS](http://www.ngs.noaa.gov/opus)



REFERENCES

11/8/1881 APPROVED ORIGINAL SURVEY & FIELD NOTES BY W.S. DAVIS, SURVEYOR GENERAL NEVADA

Art Artisan Land Survey, Inc.
"Where Art & Measurement Science Converge"

Sec. 13/24/18/19
Twn. 11 S.
Rng. 62 & 63 E.
M.D.M.

CORNER RECORD

Sheet 21 of 21

MONUMENTS

ARTISAN L.S.
GEODETIC "WHERE ART & MEASUREMENT SCIENCE CONVERGE"
NORTH

PERPETUATED
MONUMENT
PRIMARY CONTROL

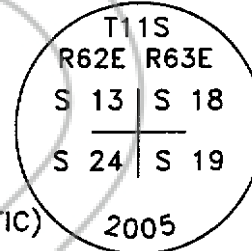
SET 1.5" DIA. ALUMINUM
MONUMENT AS SHOWN
LAT: 36°58'09.25641"N
LON: 114°57'43.12919"W



SET 1.5" DIA. ALUMINUM
MONUMENT AS SHOWN
LAT: 36°58'50.03275"N
LON: 114°55'54.99535"W

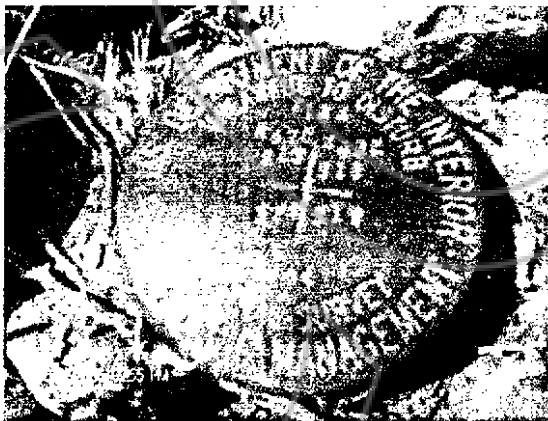


FOUND BLM BRASS
MONUMENT "2005"
SEE PHOTOS
LAT: 36°59'04.32472"N
LON: 114°58'43.11438"W
(MINIMUM OF 15-MINUTES STATIC)



DATUM

CP'S KANA AND KANB WERE
ESTABLISHED USING NGS' OPUS
WITH 24-HOURS± OF STATIC
DATA, NGS NAD83 (2002).
[HTTP://WWW.NGS.NOAA.GOV/OPUS](http://www.ngs.noaa.gov/opus)



REFERENCES

11/8/1881 APPROVED ORIGINAL SURVEY & FIELD NOTES BY W.S. DAVIS, SURVEYOR GENERAL NEVADA

Art Artisan Land Survey, Inc.
"Where Art & Measurement Science Converge"