

MATCHLINE
SEE SHEET 02

SEC 18

4625 FEET
S 25° 22' 40" W

SEC 13

SEC 19

SEC 24

SEC 23

TOWNSHIP 01 NORTH
RANGE 71 EAST MDB&M

TOWNSHIP 01 NORTH
RANGE 70 EAST MDB&M

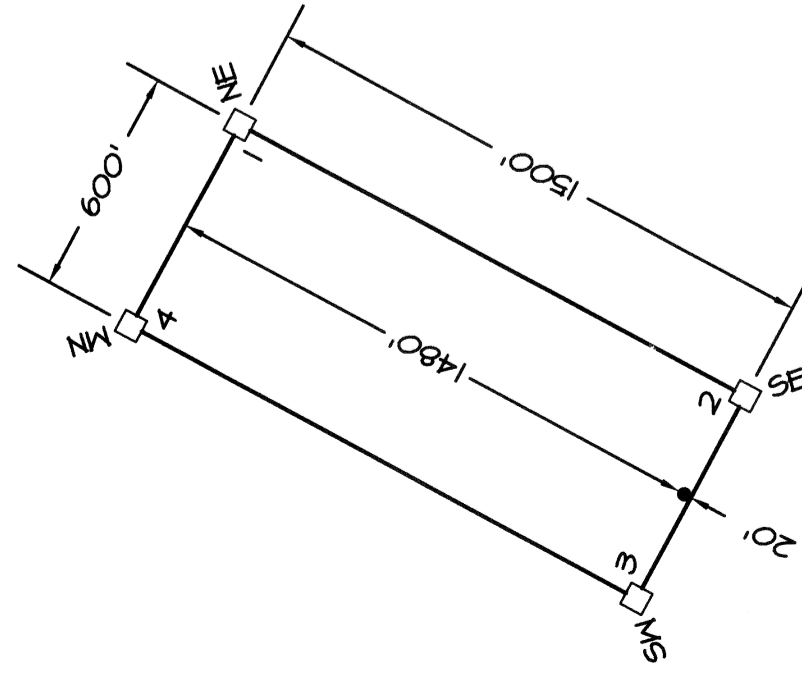
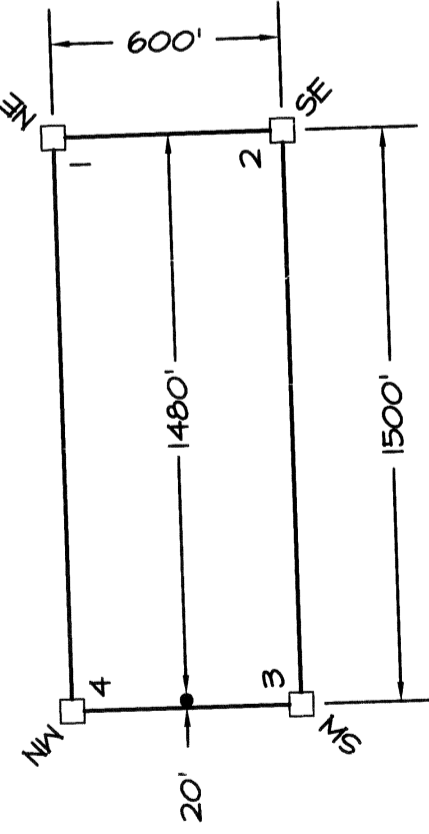
427271

PREP AND RECEIVED AT PROJECT C.
Gold Summit Corp
Sept 4, 2006
24 MINUTES PAST 1 O'CLOCK
8:41 IN BOOK 222 OF OFFICIAL
RECORDS, PAGE 16 LINCOLN
COUNTY, NEVADA
Janice Brasher

NOTES:
1. SEE POINT, SE CORNER OF GOLD BIT TO
NE CORNER OF SECTION 18 TOIN RTE

LOCATION DATES:
JUNE 04, 2006- GOLD 80-81, 90-92, 110-115, 210-216, 310-317,
410-417, 510, 516, 517

222 PAGE 66



LEGEND

□ = CORNER

● = LOCATION MONUMENT

**GOLD CLAIMS
EAGLE VALLEY
MINING DISTRICT**

ACAD FILE NAME	DRAWN BY
DATE	SPLS
PLOT SCALE	MODIFIED BY
1"=500'	SPLS

1

2

JULY 2006

LOCATED BY:
ZACHARY HENDERSON
AGENT FOR:

GOLD SUMMIT CORPORATION, U.S.A.

970 CAUGHLIN CROSSING, SUITE 100
RENO, NEVADA 89519
PH: (775) 284-1200 EMAIL: htaylor@goldsummitcorp.com

TN 01N R, T0E MDB&M SEC 13, 23-24
TN 01N R, T1E MDB&M SEC 18-19
LINCOLN COUNTY, NEVADA