

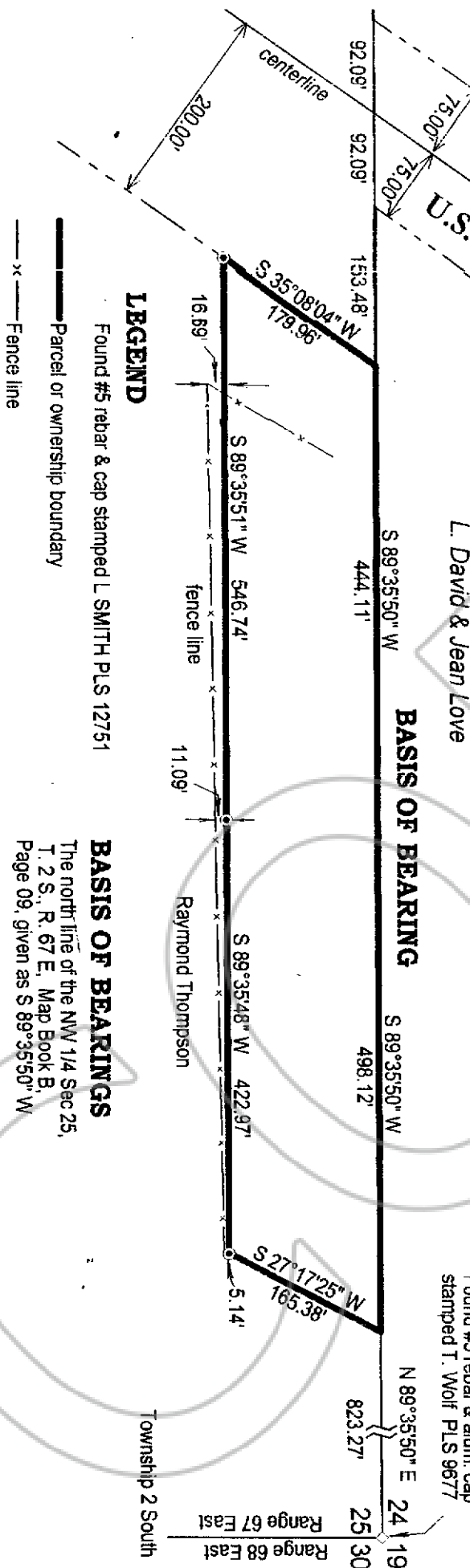
CORNER RECORD

127086

FILED FOR RECORDING
AT THE REQUEST OF

Lenard Smith
2006 AUG 16 PM 3 18

LINCOLN COUNTY RECORDED
FEE 14.00 DEPAR
LESLIE BOUCHER



LEGEND

Found #5 rebar & cap stamped L SMITH PLS 12751

Parcel or ownership boundary

Fence line

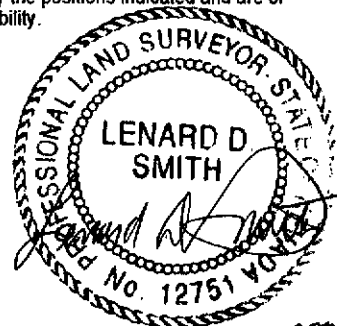
BASIS OF BEARINGS

The north line of the NW 1/4 Sec 25,
T. 2 S., R. 67 E., Map Book B,
Page 09, given as S 89°35'50\"/>

SURVEYOR'S CERTIFICATE

I, Lenard D. Smith, a Professional Land Surveyor registered in the State of Nevada, certify that:

1. This corner record represents the restoration of corners conducted under my direct supervision.
2. The monuments perpetuated lie within Section 25, Township 2 South, Range 68 East, M.D.M., in the Townsite of Panaca, Lincoln County, Nevada. The establishment, or restoration was completed on May 11, 2006.
3. This corner record is recorded as required by N.R.S. 329 and complies with the Nevada Administrative Code for Professional Land Surveyors for Corner Records and any local ordinances in effect on the date that the establishment or restoration was completed.
4. The monument(s) or witness monument(s) and accessories found are of the character shown, occupy the positions indicated and are of sufficient durability.



Aug 16, 2006
Lenard D. Smith PLS 12751 Exp 6/30/08

Lenard Smith
Land Survey
509 Main Street
P.O. Box 443
Callente, Nevada 89008
Phone/Fax 775 728 3365
Cell Phone 775 962 1190

This Plat shows the recovery of the south line of Parcel 1, in Plat Book B, Page 09, Lincoln County, Nevada Records and relative location in comparison to existing fence.