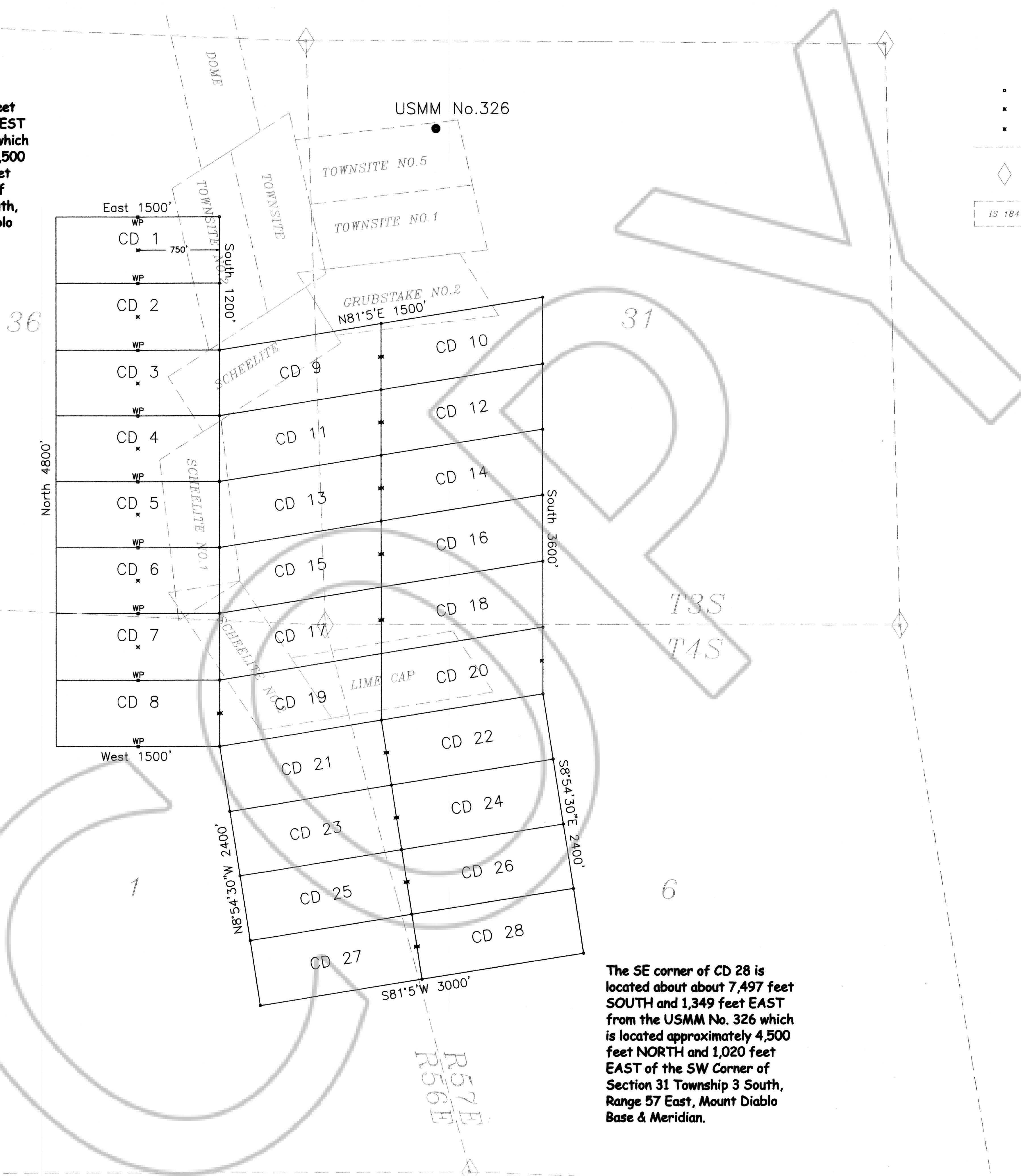


The NW corner of CD 1 is located about 791 feet SOUTH and 3,486 feet WEST from the USMM No. 326 which is located approximately 4,500 feet NORTH and 1,020 feet EAST of the SW Corner of Section 31 Township 3 South, Range 57 East, Mount Diablo Base & Meridian.



The SE corner of CD 28 is located about 7,497 feet SOUTH and 1,349 feet EAST from the USMM No. 326 which is located approximately 4,500 feet NORTH and 1,020 feet EAST of the SW Corner of Section 31 Township 3 South, Range 57 East, Mount Diablo Base & Meridian.

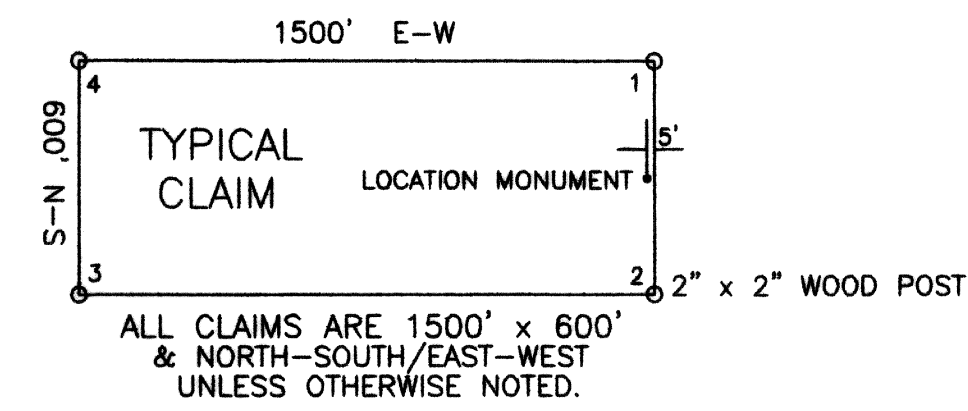
EXPLANATION

- Corner Witness Post
- Claim Location Monument
- Claim Corner Monument
- - - Projected Section Line from BLM GCDB Data
- ◇ Survey Corner Monument Projected From BLM GCDB Data
- - - IS 184 Previously Located Valid Mining Claims

Note: All claims are tied to USMM No. 326 which is located approximately 4,500 feet NORTH and 1,020 feet EAST of the projected SW Corner of Section 31 Township 3 South, Range 57 East, Mount Diablo Base & Meridian.

CLAIM LOCATION DATES:

CD 1-8,19 - JUNE 7, 2006
 CD 9-18,20-28 - JUNE 8, 2006

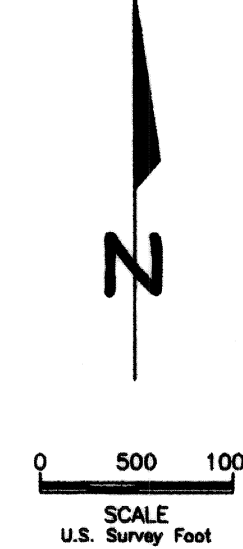


ALL CLAIMS ARE 1500' x 600' & NORTH-SOUTH/EAST-WEST UNLESS OTHERWISE NOTED.

126825
 FILED AND RECORDED AT REQUEST OF
 Galway Resources
 612 West 1635 North, Suite 101, Clinton, UT 84015
 AT 10:11 AM, THIS FIRST 11 O'CLOCK
 OF OFFICIAL RECORDS, PAGE 70, LINCOLN
 COUNTY, NEVADA.
 Leslie Boucher
 COUNTY RECORDER
 Amy Zimm, Deputy 219 70
 pd 8424.00

CD LODE CLAIMS 1-28

CLAIM MAP
 T3/4S, R56/57E, MDBM
 LINCOLN COUNTY NEVADA
 GALWAY RESOURCES US INC.
 219 East 69th Street, Apt 7H
 New York City, NY 10021



Drawn By: RBL Date: June 2006
 AutoCad 14 Drawing File: CD_CLAIMS_06_CNTY.DWG
 Survey and Map by:
 LYMAN EXPLORATION & SURVEYING OUTFIT
 612 West 1635 North, Suite 101, Clinton, UT 84015
 (801)540-0317 Fax: (801)825-3969