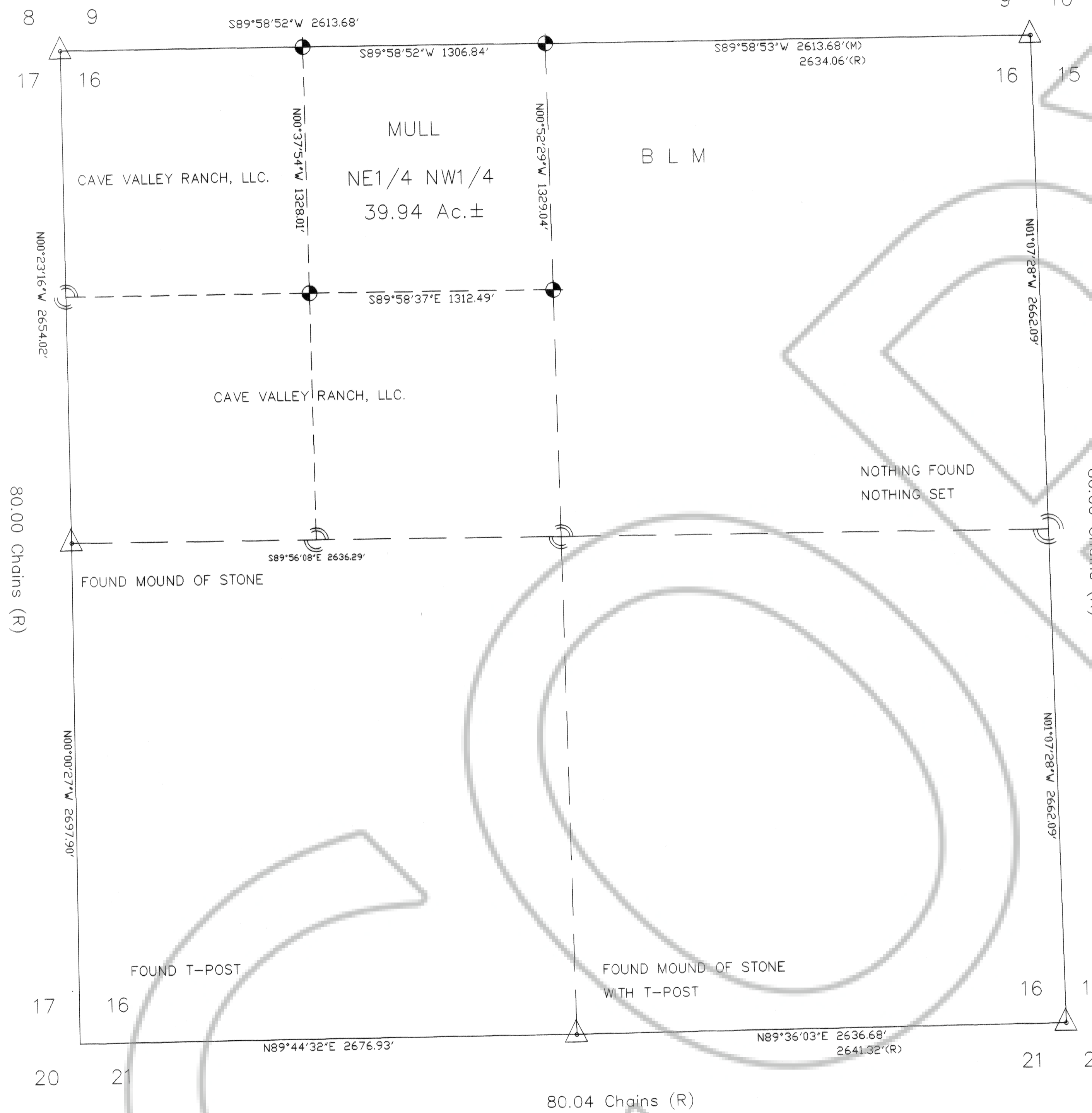


FOUND MOUND OF STONE WITH T-POST

79.82 Chains (R)



FOUND MOUND OF STONE WITH T-POST

SURVEYOR'S CERTIFICATE

I, DAVID E. PROVOST, A PROFESSIONAL LAND SURVEYOR LICENSED IN THE STATE OF NEVADA, CERTIFY THAT:

1. THIS PLAT REPRESENTS THE RESULTS OF A SURVEY CONDUCTED UNDER MY DIRECT SUPERVISION AT THE INSTANCE OF BILL & CONNIE MULL.
2. THE LANDS SURVEYED LIE WITHIN SECTION 16, T.9N., R.64E., M.D.B.&M. AND THE SURVEY WAS COMPLETED ON MAY 18, 2006.
3. THIS PLAT COMPLIES WITH THE APPLICABLE STATE STATUTES AND ANY LOCAL ORDINANCES IN EFFECT ON THE DATE THAT THE GOVERNING BODY GAVE ITS FINAL APPROVAL.
4. THE MONUMENTS DEPICTED ON THE PLAT ARE OF THE CHARACTER SHOWN, OCCUPY THE POSITIONS INDICATED AND ARE OF SUFFICIENT NUMBER AND DURABILITY.

NEVADA 11190  
DAVID E. PROVOST, PLS



NOTHING FOUND  
NOTHING SET

80.00 Chains (R)

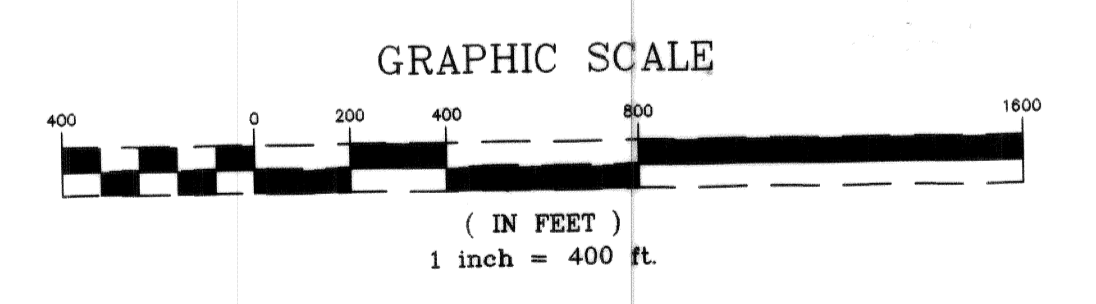
80.00 Chains (R)

FOUND MOUND OF STONE

FOUND T-POST

FOUND MOUND OF STONE WITH T-POST

FOUND MOUND OF STONE WITH T-POST



BASIS OF BEARING: GPS OCCUPATION FOUND CORNERS  
EAST BOUNDARY SECTION 16

LEGEND

- FOUND BLM CORNER AS DESCRIBED
- SET REBAR & CAP PLS 11190
- CALCULATED POINT ONLY NOTHING FOUND OR SET
- (R) RECORD
- (M) MEASURED

NOTES

- REFERENCE MATERIAL:
1. ASSESSOR'S PLAT
  2. DEED BK.198 PG.278
  3. BLM SURVEY NOTES
  4. DISTANCES SHOWN ARE MEASURED UNLESS OTHERWISE NOTED

1:6586

FILED AT THE REQUEST OF  
MOUNTAIN HIGH SURVEYING  
ON THE 30<sup>th</sup> DAY OF May  
2006, AT 10 MIN. PAST 9 . M.  
FILES OF  
LINCOLN COUNTY, NEVADA  
*Spillie Touch*  
RECORDER  
DEPUTY RECORDER  
FILE No. 126586 #200

RECORD OF SURVEY  
FOR  
BILL & CONNIE MULL

PROPERTY LOCATION:  
NE1/4NW1/4 SECTION 16, T.9N.R.64E.  
LINCOLN COUNTY, NEVADA