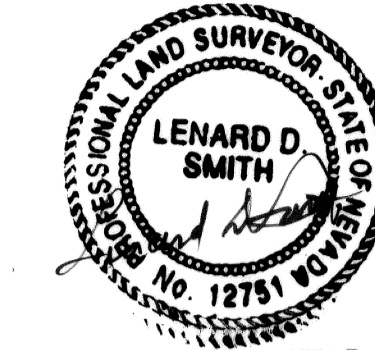


SURVEYOR'S CERTIFICATE

I, Lenard D. Smith, a Professional Land Surveyor licensed in the State of Nevada, certify that:

1. This plat represents the results of a survey conducted under my direct supervision at the instance of Vaughn Higbee.
2. The lands surveyed lie within Section 31, T. 6 S., R. 61 E., M.D.M. The survey was completed on May 8, 2006.
3. This plat complies with the applicable state statutes and any local ordinances in effect on the date that the governing body gave its final approval.
4. The monuments depicted on the plat are of the character shown, occupy the positions indicated and are of sufficient number and durability.



Lenard D. Smith P.L.S. 12751 Exp. 6/30/06
 May 8, 2006

OWNER'S CERTIFICATE

We certify that we are the owners of the properties shown on this plat

1. That we have requested Lenard D. Smith, a Professional Land Surveyor to prepare it.
2. That we authorize the recordation thereof.
3. That we approve any easements as shown

Vaughn M. Higbee
 Vaughn M. Higbee
Joe V. Higbee
 Joe V. Higbee

ACKNOWLEDGEMENT

State of Nevada)
 County of Lincoln)ss
 This instrument was acknowledged before me on May 8, 2006
 by Joe V. Higbee and Vaughn M. Higbee and executed freely and voluntarily
 for the purposes stated.

Cory B. Smith
 Cory B. Smith
 Notary Public

My Commission Expires Nov. 2, 2007



RECORDER'S CERTIFICATE

File number 126503
 Recorded at the request of Lenard D. Smith
 Filed in Plat Book C, Page 201
 This 11th day of May 2006
 at 4:23 p.m.
 LESLIE BOUCHER, RECORDER
 By *Leslie Boucher*
 \$ 21.00

A.P.N. 011-192-08

Susequent Parcel Map

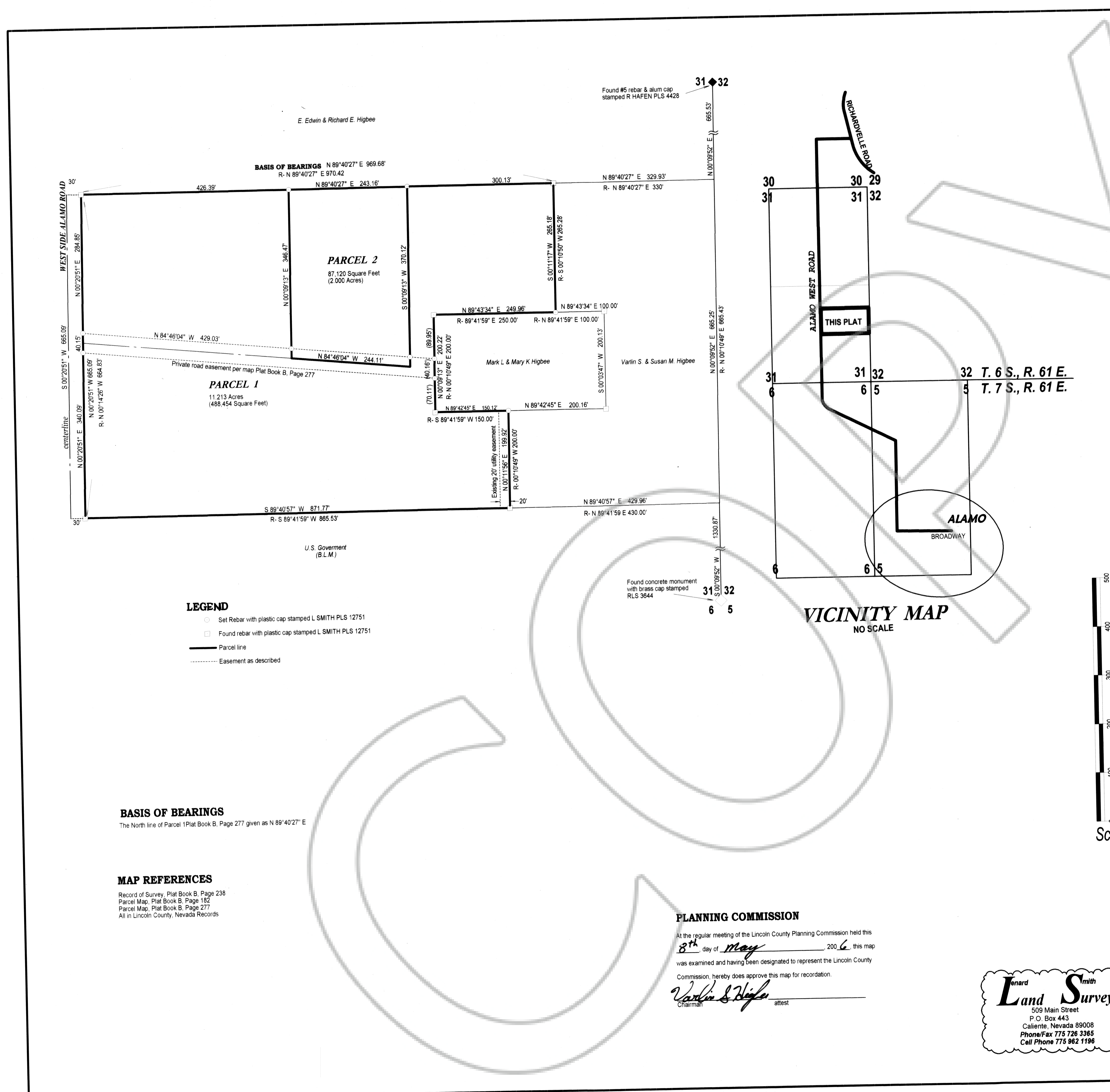
For Joe V. Higbee and Vaughn M. Higbee

In the S1/2NE1/4SE1/4 Section 31, T. 6 S., R. 61 E.,
 M.D.M.



PLANNING COMMISSION

At the regular meeting of the Lincoln County Planning Commission held this
8th day of May, 2006, this map
 was examined and having been designated to represent the Lincoln County
 Commission, hereby does approve this map for recordation.
Vaughn M. Higbee
 Chairman attest



LEGEND

- Set Rebar with plastic cap stamped L SMITH PLS 12751
- Found rebar with plastic cap stamped L SMITH PLS 12751
- Parcel line
- Easement as described

BASIS OF BEARINGS

The North line of Parcel 1 Plat Book B, Page 277 given as N 89°40'27" E

MAP REFERENCES

Record of Survey, Plat Book B, Page 238
 Parcel Map, Plat Book B, Page 182
 Parcel Map, Plat Book B, Page 277
 All in Lincoln County, Nevada Records

