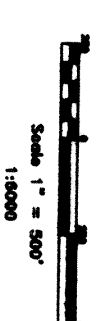
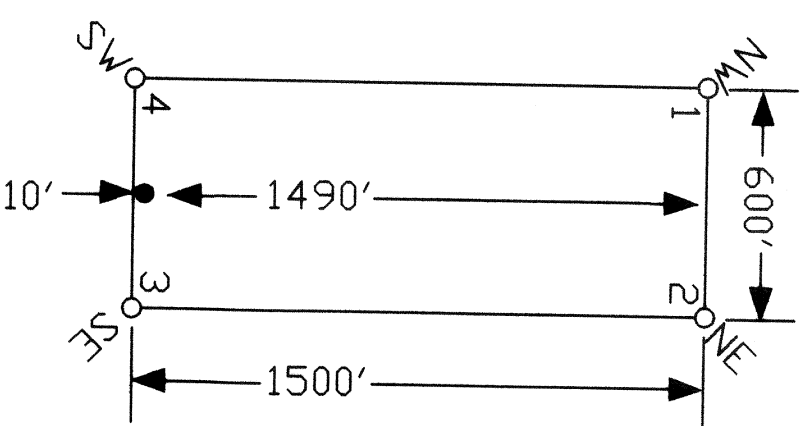


TYPICAL CLAIM



32

33

185	187		
10' LM offset	.	.	.
186	188		
10' LM offset	.	.	.

67	69	71
10' LM offset	.	.
68	70	72
10' LM offset	.	.

THE POINT DATA: The "COMMON CORNER" of FB Nos. 69 and 71 lies approximately 8074 feet west and 19877 feet north of the southeast corner of section 21, T. 1N., R. 57E., M.D.B.M. The common corner lies at UTM (nad 27, zone 11) 624252 E / 4204515 N.

E 56 R
E 57 R

T 2 N
T 1 N

5

4

LOCATION DATES:

December 26, 2005: FB Nos. 1-12, 67-72, 185-188
 January 14, 2006: FB Nos. 13-14, 43-46, 207-210
 January 15, 2006: FB Nos. 21-28
 February 11, 2006: FB Nos. 35-42, 149, 151, 153

MAP: FB LODE MINING CLAIMS

MEXIVADA MINING CORP.

P.O. BOX 1925, ELKO, NV 89803

FB Lode Claims Nos. 1-14, 21-28, 35-46, 67-72, 149, 151, 153, 185-188, 207-210

T. 1 & 2 N., R. 57 E., M.D.B.M., Lincoln County, Nevada

SHEET 1 OF 2

DATE: 21 March 2006
 PLOT SCALE: 1"=500'
 DRAWN BY: PBR

NOTES:

ALL CLAIMS ARE 1500-FEET by 600-FEET IN DIMENSION.
 ALL LOCATION MONUMENTS SET 10-FEET FROM CLAIM END CENTERLINE.
 ALL CLAIM CORNERS and LOCATION MONUMENTS are WOODEN STAKES at least 1.5" by 1.5" by 4".
 RED LINES INDICATE APPROXIMATE SECTION LINES.
 CYAN LINES INDICATE APPROXIMATE SECTION QUARTERS.

126235
 MEXIVADA MINING CORP.
 S.S. MINUTE PART 4, COCONA
 PLAT IN BOOK 214 OF OFFICIAL
 RECORDS, PAGE 235, LINCOLN
 COUNTY, NEVADA
 Leslie Boncher
 Surveyor
 Hutterer, Repoby

45X 214 Pgs 235