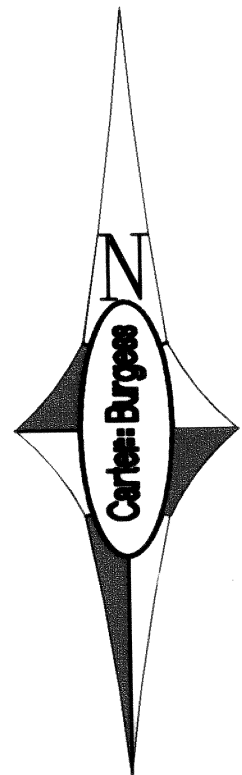
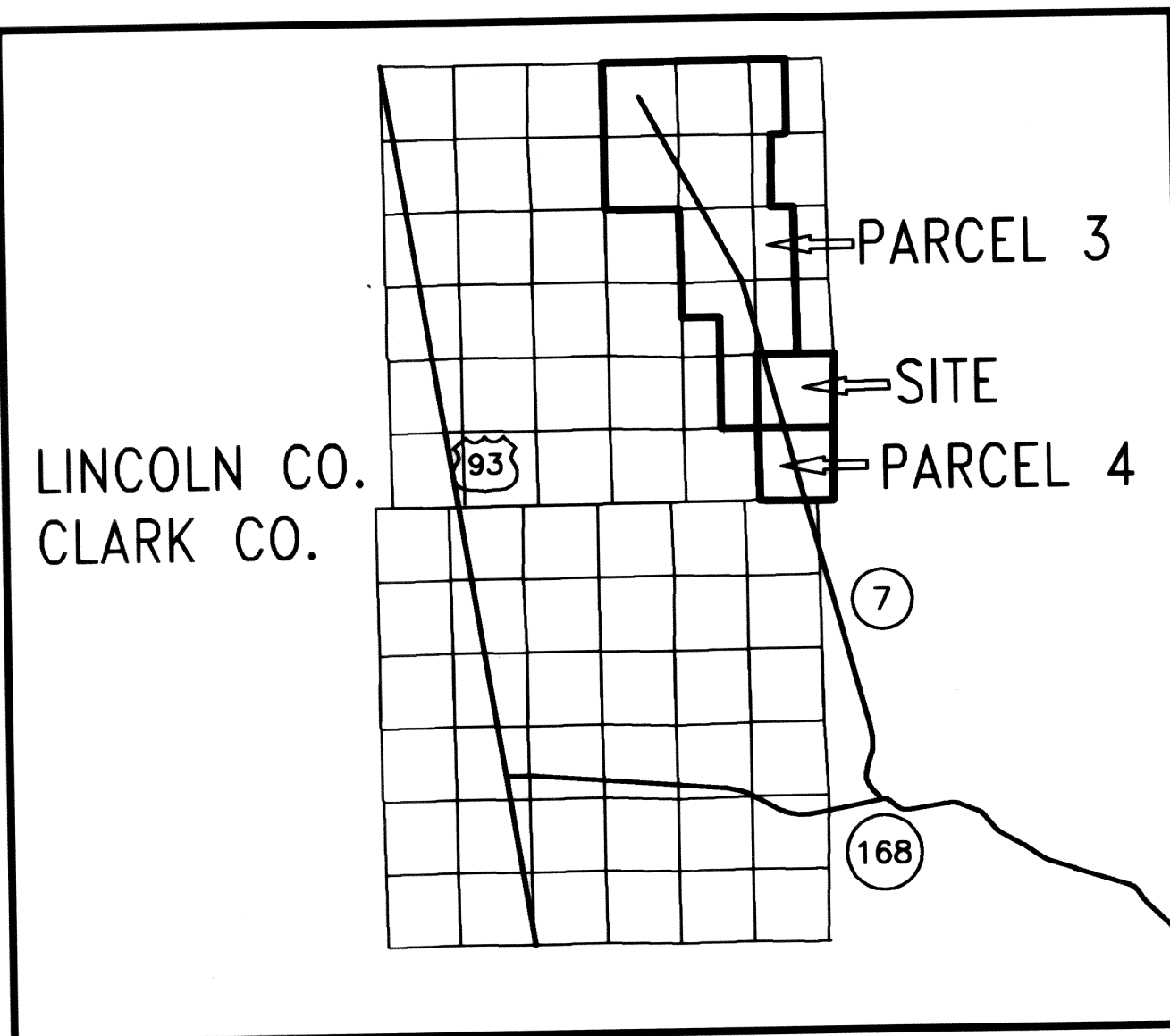


PARCEL MAP

FOR
COYOTE SPRINGS INVESTMENT LLC
SECTION 25 TOWNSHIP 12 SOUTH, RANGE 63 EAST, M.D.M.,
LINCOLN COUNTY, NEVADA



NOT TO SCALE



VICINITY MAP

PLANNING COMMISSION

AT THE REGULAR MEETING OF THE LINCOLN COUNTY PLANNING COMMISSION MEETING HELD THIS 13 DAY OF March, 2006 THIS PLAT WAS EXAMINED AND RECOMMEND IT FOR APPROVAL.

Charles D. Wigler CHAIRMAN

OWNER'S CERTIFICATE

I CERTIFY THAT WE ARE THE OWNERS OF THE PARCELS SHOWN ON THIS PLAT, GRANT THE EASEMENTS SHOWN ON THIS PLAT AND THAT WE HAVE REQUESTED CRAIG D. WILSON, A PROFESSIONAL LAND SURVEYOR TO PREPARE THIS MAP FOR RECORDATION.

Harvey Whittemore
HARVEY WHITTEMORE, MANAGER
COYOTE SPRINGS INVESTMENT LLC,
A NEVADA LIMITED LIABILITY COMPANY

ACKNOWLEDGMENT

THE ABOVE PERSON, KNOWN TO ME AS THE PERSON REPRESENTED ON THIS PLAT HAVE PERSONALLY APPEARED BEFORE ME, A NOTARY PUBLIC, AND HAVE EXECUTED THE ABOVE OWNER'S CERTIFICATE FREELY AND VOLUNTARILY THIS 15 DAY OF March 2006.

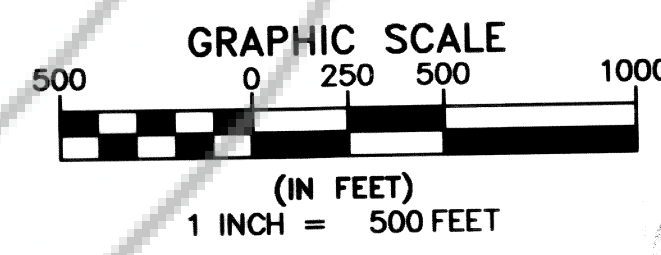
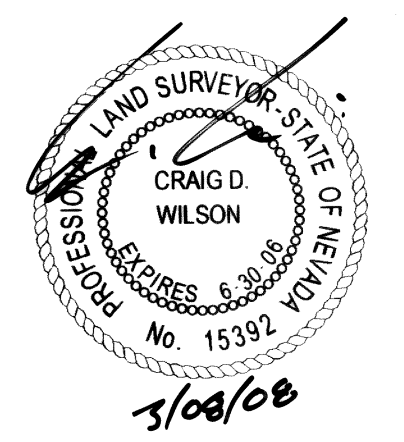
D. A. Blades
D. A. BLADES
Notary Public - State of Nevada
Appointment Recorded in Washoe County
No. 01-79114-2 - Expires July 13, 2009
NOTARY PUBLIC

SURVEYOR'S CERTIFICATE

I, CRAIG D. WILSON, A PROFESSIONAL LAND SURVEYOR LICENSED IN THE STATE OF NEVADA CERTIFY THAT:

1. THIS PLAT REPRESENTS THE RESULTS OF A SURVEY CONDUCTED UNDER MY DIRECT SUPERVISION AT THE INSTANCE OF COYOTE SPRINGS INVESTMENT LLC, A NEVADA LIMITED LIABILITY COMPANY
2. THE LANDS SURVEYED LIE WITHIN SECTION 25 TOWNSHIP 12 SOUTH, RANGE 63 EAST, M.D.M. THE SURVEY WAS COMPLETED ON JANUARY 16, 2006.
3. THIS PLAT COMPLIES WITH THE APPLICABLE STATE STATUTES AND ANY LOCAL ORDINANCES IN EFFECT ON THE DATE THAT THE GOVERNING BODY GAVE ITS FINAL APPROVAL.
4. THE MONUMENTS DEPICTED ON THE PLAT ARE OF THE CHARACTER SHOWN, OCCUPY THE POSITIONS INDICATED AND ARE OF SUFFICIENT NUMBER AND DURABILITY.

CRAIG D. WILSON
PROFESSIONAL LAND SURVEYOR
NEVADA CERTIFICATE NO. 15392

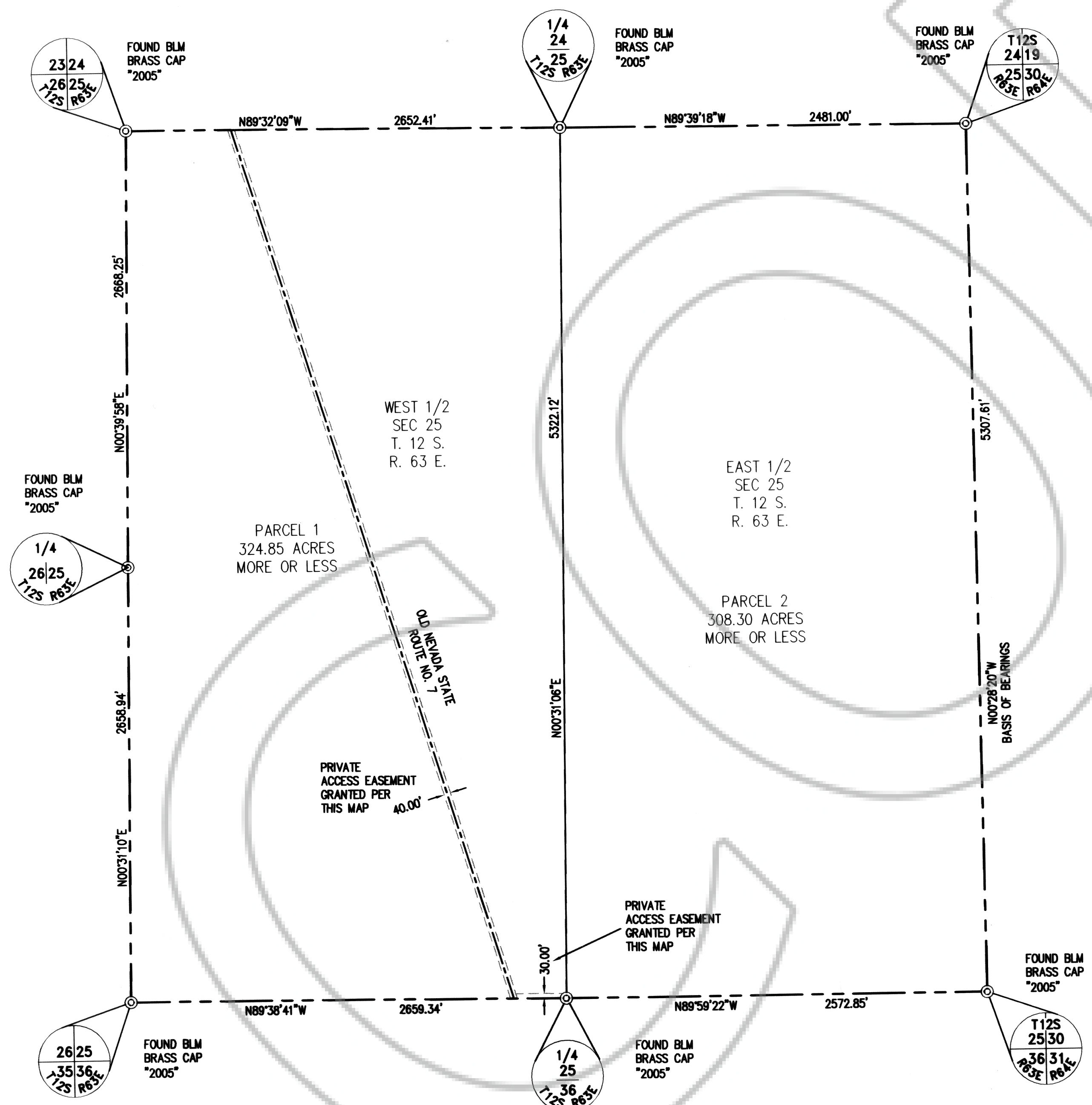


LEGEND

- SECTION LINE
- PARCEL LINE
- CENTERLINE
- - - PRIVATE ACCESS EASEMENT
- ⊙ FOUND MONUMENT AS NOTED

BASIS OF BEARINGS

NORTH 00°28'20" WEST, BEING THE BEARING OF THE EAST LINE OF SECTION 25, TOWNSHIP 12 SOUTH, RANGE 63 EAST, AS SHOWN IN A BUREAU OF LAND MANAGEMENT PRELIMINARY PLAT OF SAID TOWNSHIP, RESURVEYED BY D.J. PASSMORE AND C.L. WANLESS IN 2003-2004.



APN 08-201-05

Carter Burgess CONSULTANTS IN PLANNING, ENGINEERING, CONSTRUCTION MANAGEMENT, AND RELATED SERVICES.		6655 BERMUDA ROAD LAS VEGAS, NEVADA 89119 PH. (702) 938-5400 FAX (702) 938-5454	
PARCEL MAP			
FOR COYOTE SPRINGS INVESTMENT LLC SECTION 25 TOWNSHIP 12 SOUTH, RANGE 63 EAST, M.D.M., LINCOLN COUNTY, NEVADA			
JUN 241408	DATE: 02-17-06	SHEET	OF
DRAWN BY: CW	REV:	1	1
CHECKED BY: dp			
RECORDER'S CERTIFICATE		FILE NO. 126174	
RECORDED AT THE REQUEST OF:		CARTER & BURGESS, INC.	
FILED IN PLAT BOOK C, PAGE 183		THIS 23 DAY OF March, 2006	
AT 1:27 P.M.		LINCOLN COUNTY, NEVADA RECORDS	
LESLIE BOUCHER, RECORDER		BY <i>Angela DePoy</i>	

S:\241408\MAPPING\PARCEL MAPS\PM.dwg