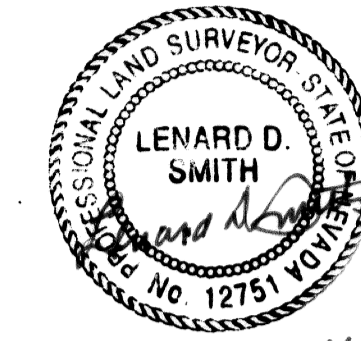


SURVEYOR'S CERTIFICATE

I, Lenard D. Smith, a Professional Land Surveyor licensed in the State of Nevada, certify that:

1. This plat represents the results of a survey conducted under my direct supervision at the instance of Preston Wadsworth.
2. The lands surveyed lie within Section 8, T. 2 S., R. 68 E., M.D.M. The survey was completed on January 09, 2006.
3. This plat complies with N.R.S. 625.
4. The monuments depicted on the plat are of the character shown, occupy the positions indicated and are of sufficient number and durability.



Feb 09, 2006

Lenard D. Smith P.L.S. 12751 (expires June 30, 2006)

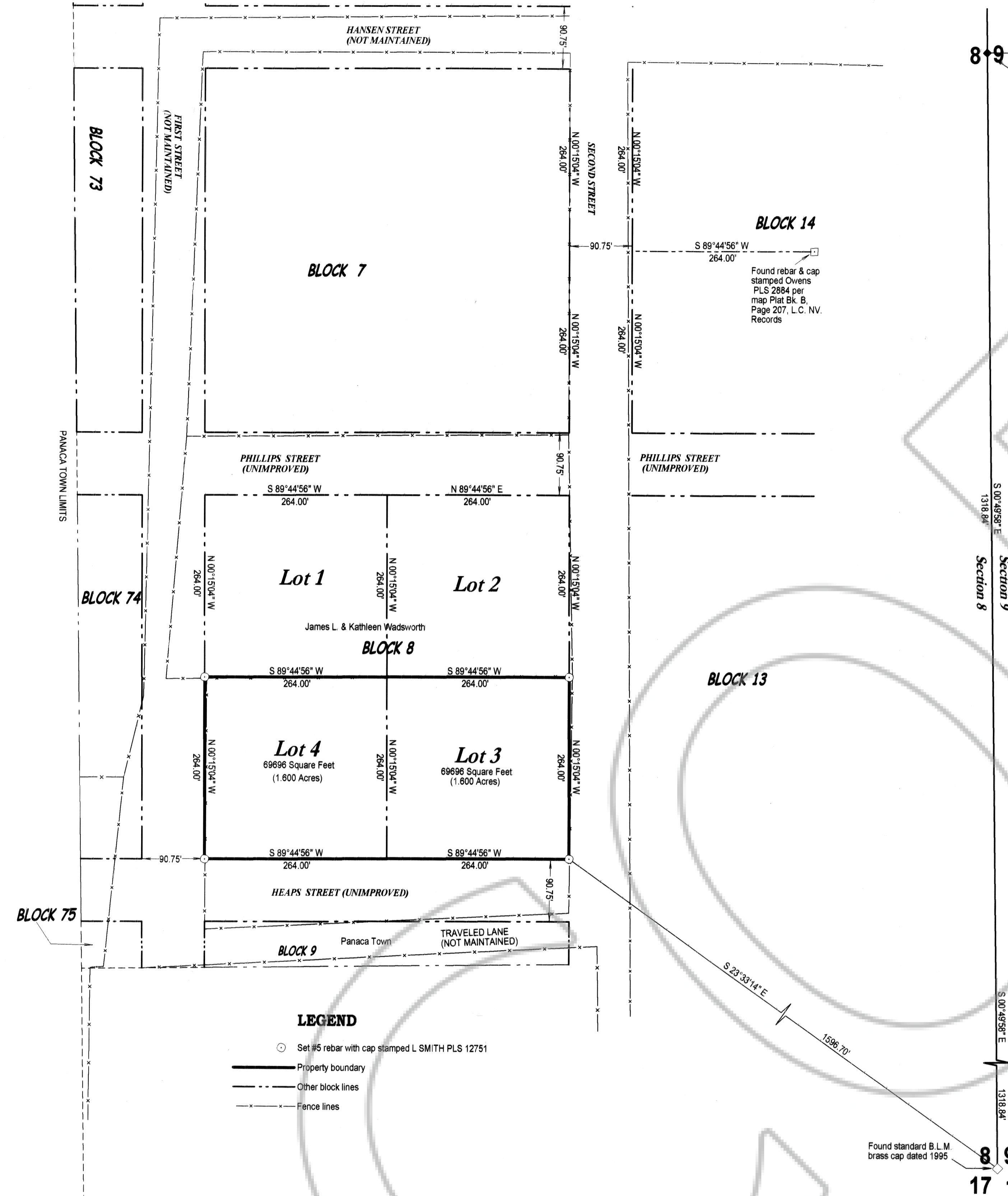
BASIS OF BEARINGS per Plat Bk. B, Pg. 90

N 89°18'40" E 2652.77' Found standard B.L.M. brass cap dated 1995 (center of Section 9)

8 9 Found standard B.L.M. brass cap dated 1995

BLOCK 14

S 89°44'56" W 264.00' Found rebar & cap stamped Owens PLS 2894 per map Plat Bk. B, Page 207, L.C. NV. Records



LEGEND

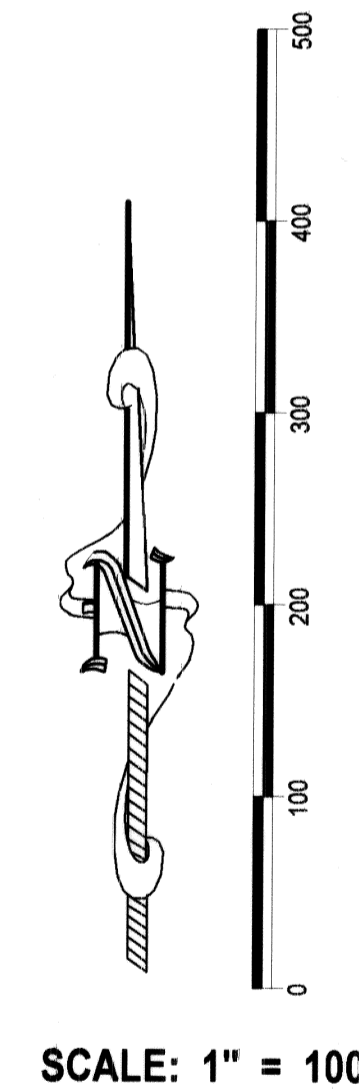
- Set #5 rebar with cap stamped L. SMITH PLS 12751
- Property boundary
- - - Other block lines
- - - Fence lines

MAP REFERENCES

Map of Panaca Town Plat Book A, Page 34
 Map, Block 14 in Panaca Town Plat Book B, Page 207

BASIS OF BEARINGS

The north line of the southwest quarter of Section 9 monumented by standard B.L.M. brass caps (marked 1995), the west quarter corner and the center of section, set by way of a Dependent Resurvey which has not as yet been approved. As given with the Panaca Annexation Map, Plat Book B, Page 90 of Lincoln County, Nevada Records (N 89°18'40" E).



RECORDER'S CERTIFICATE

File Number: 125324
 Recorded at the request of Lenard D. Smith
 Filed in Plat Book C, Page 168
 This 9 day of Feb, 2006
 at 1:14 p.m.
 LESLIE BOUCHER, RECORDER
 by Amy Egan, Deputy
 Fee 21.00

RECORD OF SURVEY

*Lots 3 and 4 of Block 8, Panaca, Nevada Townsite
 Lincoln County, Nevada In the NE1/4SE1/4
 Section 8, T. 2 S., R. 68 E., M.D.M.*

For Preston and Sarah Wadsworth

