

LOCATOR:

Gold Summit Corporation, USA
970 Caughlin Crossing, Suite 100
Reno, Nevada 89509

LOCATION:

Sections 6,7,8,18 T1N, R71E
Lincoln County, Nevada

TIE POINT:

The NE corner of GBM 10 is 1500' N2W SE corner
of section 7, T1N, R71E, MDBM

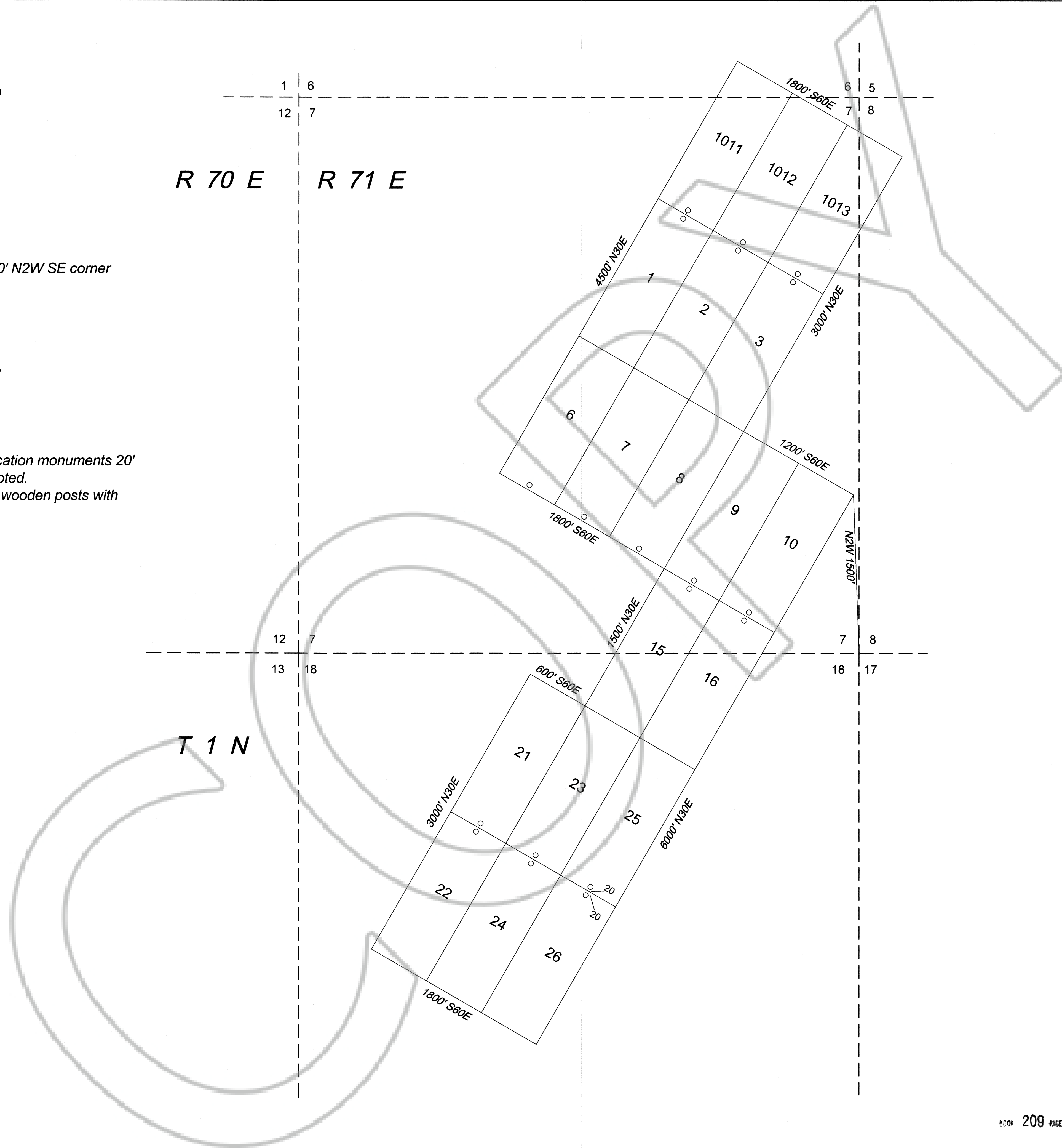
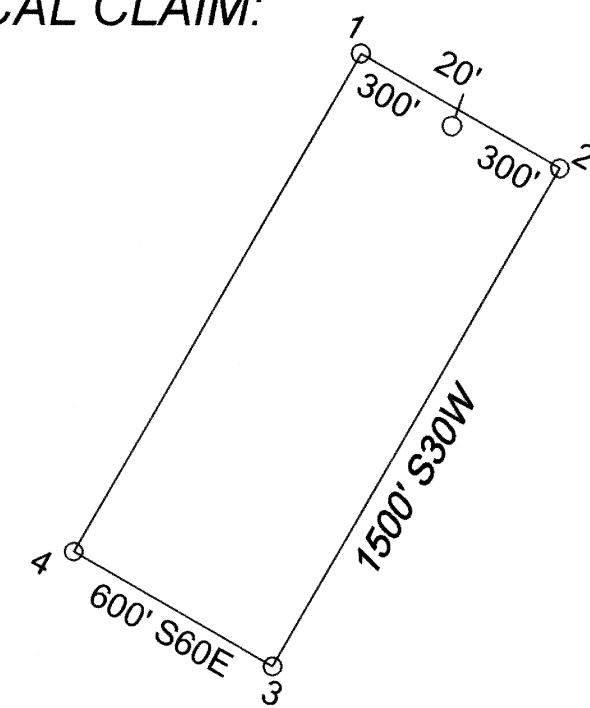
LOCATION DATES:

10/15/05 GBM 6-10, 15-16
10/16/05 GBM 1-3, 1011-1013
12/3/05 GBM 21-26

NOTES:

All claims are 1500'x600', with location monuments 20'
in from end center, except as noted.
All monuments are 2"x2"x4" long wooden posts with
scribed metal tags.

TYPICAL CLAIM:



125620
TAD AND RECORDED AT REQUEST
Gold Summit Corp.
30 MINUTES PAST 4 O'CLOCK
P.M. IN BOOK 209 OF OFFICIAL
LOCAL PAGE 352
Leslie Doster
County Clerk
Amylun, Deputy
\$289.00

GBM 1-3, 6-10, 15-16, 21-26, 1011-1013 LODE MINING CLAIMS		
Scale: 1"=500'	Located: 10/15-16/05, 12/3/05 Completed: 12/3/05	Drafted by: JBA Revised:
Map 1 of 1		