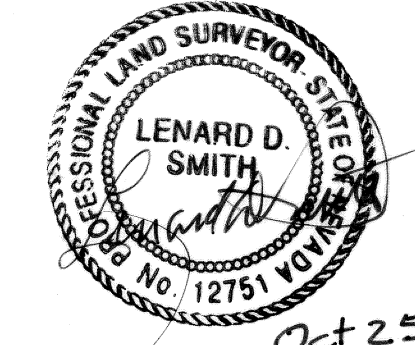


142

SURVEYOR'S CERTIFICATE

I, Lenard D. Smith, a Professional Land Surveyor licensed in the State of Nevada, certify that:

1. This plat represents the results of a survey conducted under my direct supervision at the at the instance of Bart Pearson
2. The lands surveyed lie within Section 15, Township 5 North, Range 69 East, M.D.M. The survey was completed on October 6, 2005
3. This plat complies with the applicable state statutes and any local ordinances.
4. The monuments depicted on the plat are of the character shown, occupy the positions indicated and are of sufficient number and durability.



Lenard D. Smith P.L.S. 12751

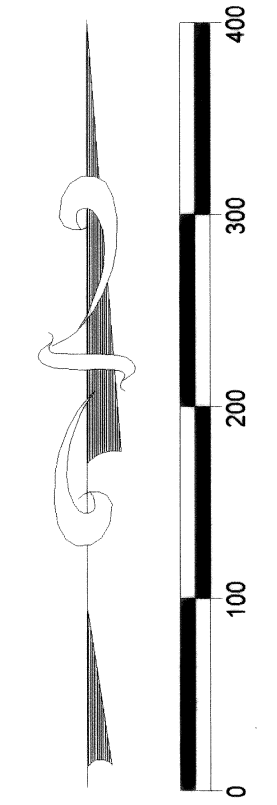
Oct 25, 2005

BASIS OF BEARINGS

The basis of bearing is the west line of the SW1/4 Section 15, Township 5 North, Range 69 East, M.D.M. which is N 00°02' W as given in the General Land Office Survey approved Dec. 16, 1925

MAP REFERENCE

General Land Office survey approved Dec. 16, 1925



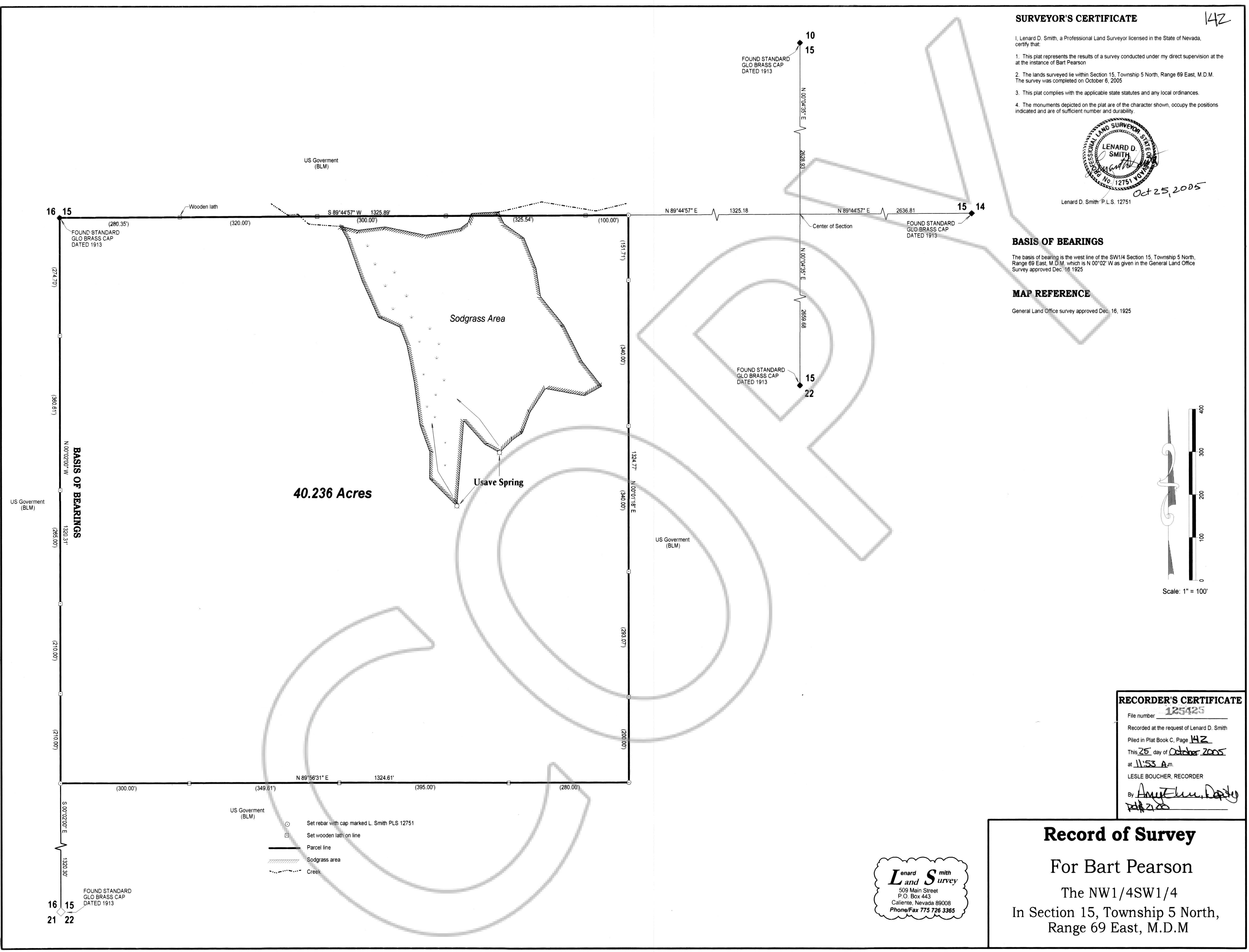
Scale: 1" = 100'

RECORDER'S CERTIFICATE

File number 125425
 Recorded at the request of Lenard D. Smith
 Piled in Plat Book C, Page 142
 This 25 day of October 2005
 at 11:53 A.M.
 LESLIE BOUCHER, RECORDER
 By Amy Elmer, Deputy

Record of Survey

For Bart Pearson
 The NW1/4SW1/4
 In Section 15, Township 5 North,
 Range 69 East, M.D.M



40.236 Acres

Sodgrass Area

Usave Spring

- Set rebar with cap marked L. Smith PLS 12751
- Set wooden lath on line
- Parcel line
- ▨ Sodgrass area
- ⋯ Creek

16 15

10 15

15 14

15 22

16 15 21 22