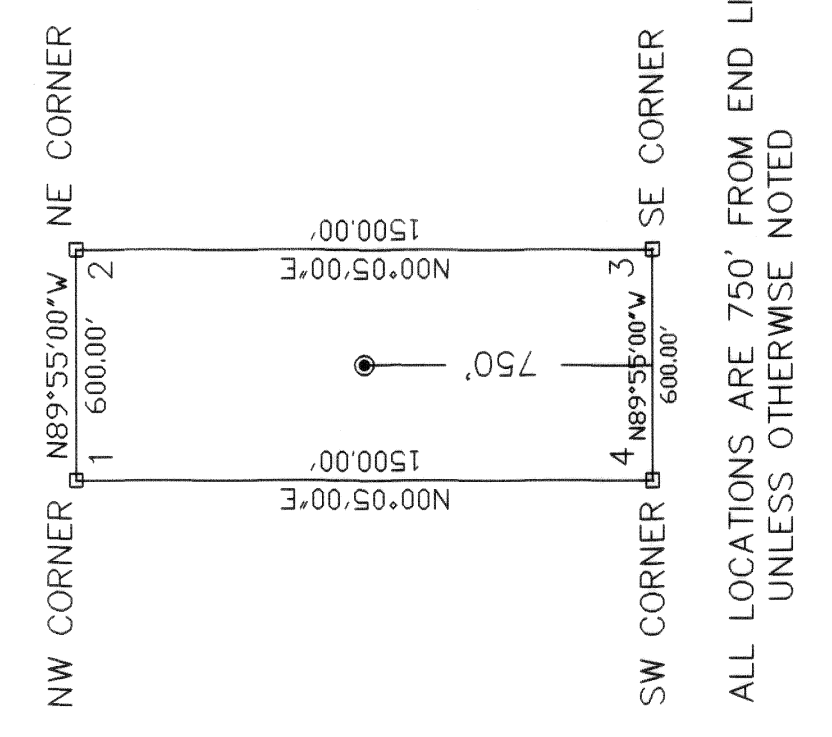


TYPICAL CLAIM DIMENSIONS AND CORNER NUMBERING UNLESS OTHERWISE NOTED



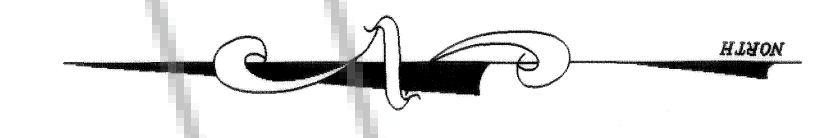
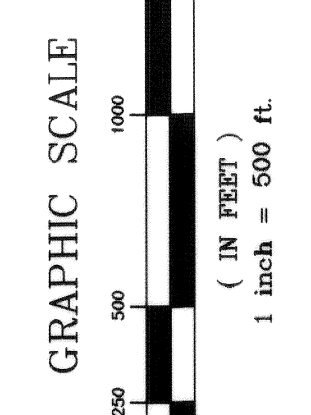
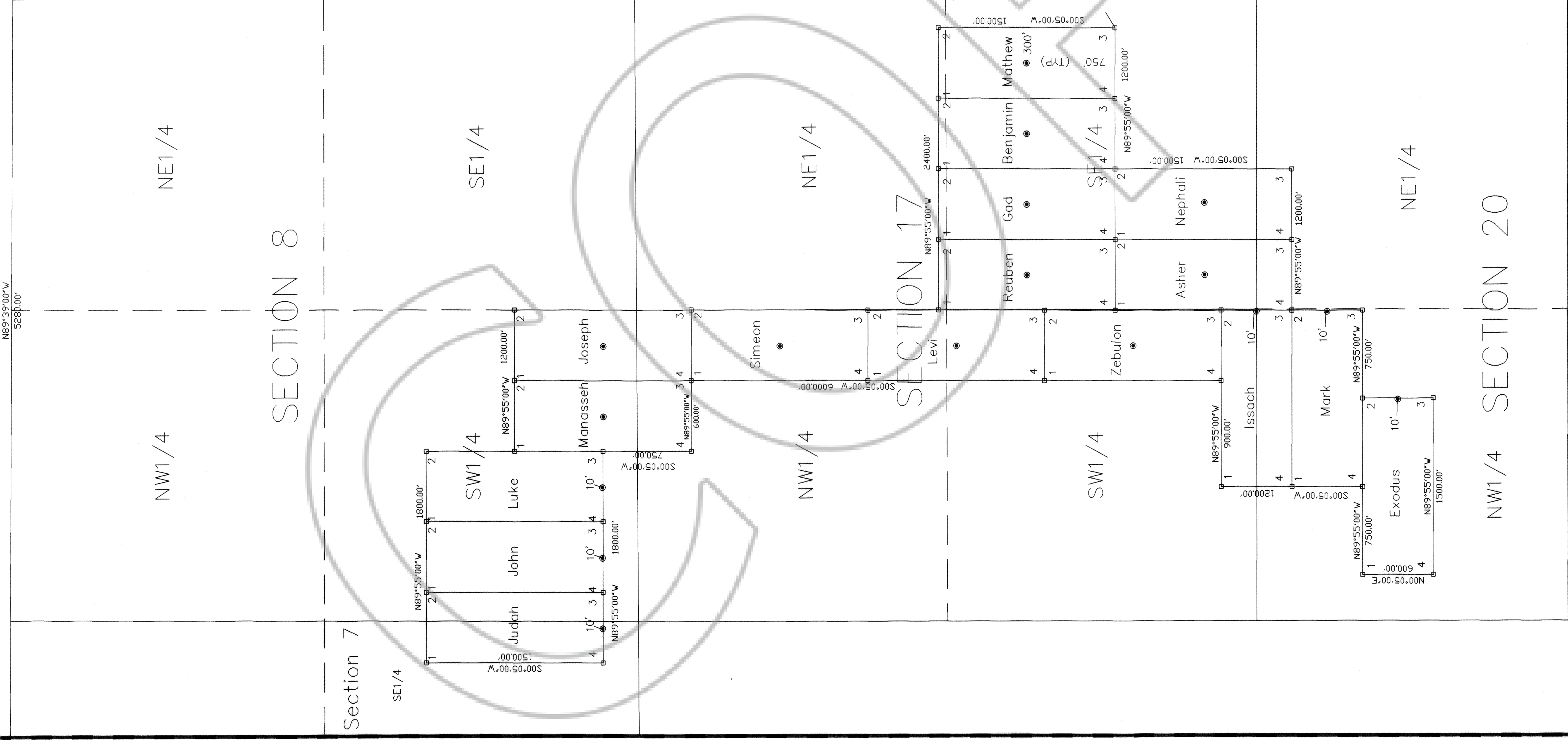
LEGEND

- LOCATION MONUMENT 2" X 2" X 4' LONG WOOD POST
- SET CORNERS 2" X 2" X 4' LONG WOOD POST

LOCATOR: PARX, LLC
 129 DOUBLE FIRE TRAIL
 GEORGETOWN, TX 78628

LOCATION DATES: JUNE 25, 2005

Tie to Road "y" Shown in NE1/4 Section 16, T.45R59E MOUNT IRISH SE, NEVADA 7.5' Topographic Map



LODE CLAIM MAP
 FOR
 PARX, LLC.
 Georgetown, Texas

CLAIMS LOCATED WITHIN SE1/4 SECTION 7;
 SW 1/4 SECTION 8; W1/2-SE1/4 SECTION 17;
 N 1/2 SECTION 20, T45R59E, M.D.B.&M.
 LINCOLN COUNTY, PAHRANAGAT MINING DISTRICT

MOUNTAIN HIGH SURVEYING
 1500 MURRY ST.
 ELY, NEVADA 89301 PH: (775)289-6722

124814
 Parx, LLC
 24 JUN 2005
 A IN BOOK 205 LOT 10
 153 PAGE 153 LINCOLN COUNTY, NEVADA
 Lealie Beaudry
 Amy Ely, Deputy
 JUN 25 2005 REC 153