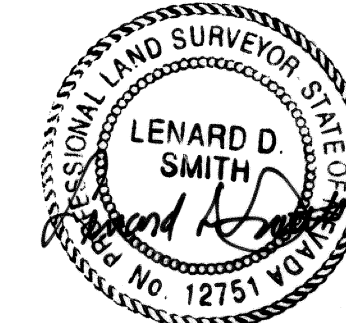


122A

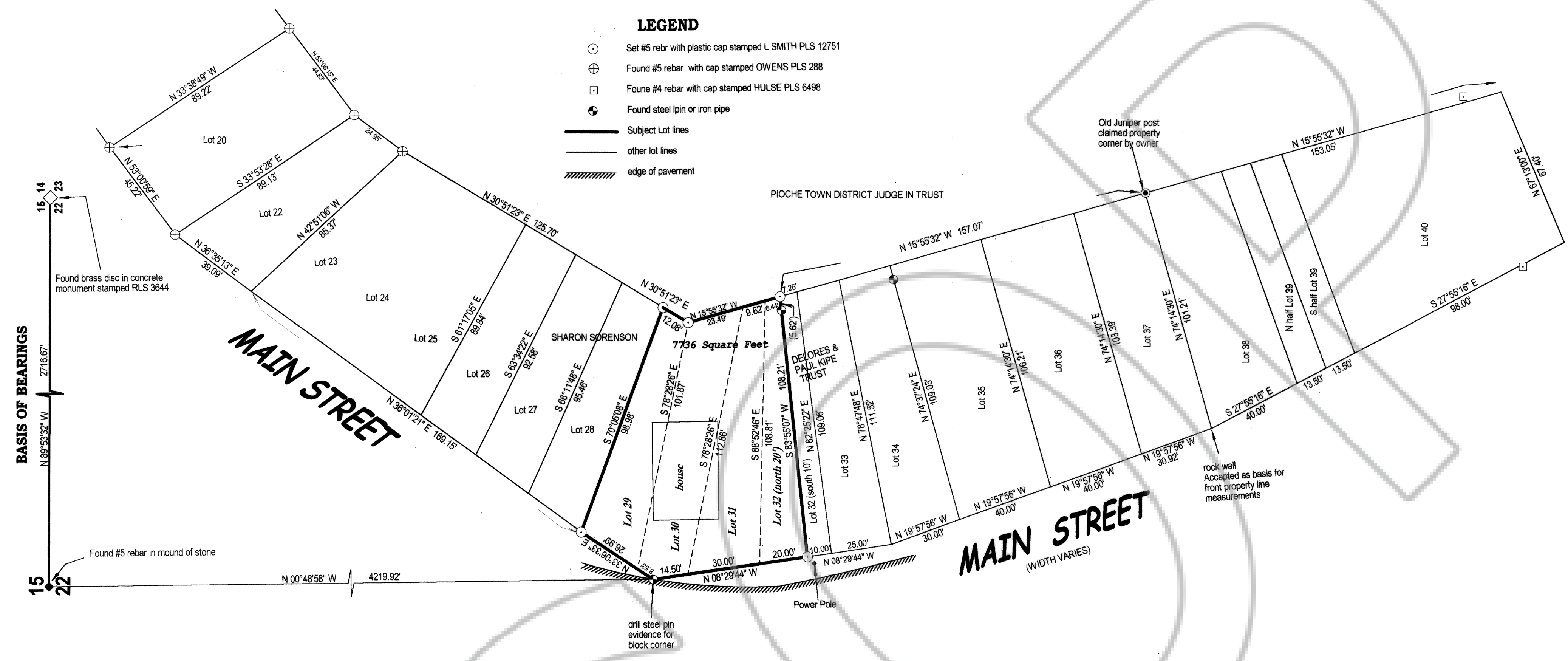
### SURVEYOR'S CERTIFICATE

- I, Lenard D. Smith, a Professional Land Surveyor registered in the State of Nevada, certify that:
1. This plat represents the results of a survey conducted under my supervision at the instance of David M. Farley.
  2. The land surveyed lies within Block 26 of Pioche Townsite in Lincoln County, Nevada, and in the SW1/4SE1/4 Section 22, T. 1 N., R. 67 E. The survey was completed on October 13, 2004.
  3. This plat complies with applicable statutes of this state and any local ordinances in effect on the date that the survey was completed, and the survey was conducted in accordance with Chapter 625 of the Nevada Administrative Code.
  4. The monuments depicted on the plat are of the character shown, occupy the positions indicated, and are of sufficient number and durability.



Lenard D. Smith PLS 12751 (Expires June 30, 2006)

June 14, 2005



### REFERENCES AND NOTES

Record of Survey, Plat Book B, Page 49, Lots 39 & 40, Block 26. This map was apparently based on the Bulloch Bros. Map (herein listed below), and could not be relied upon for location.

Unrecorded Map of Lots 15, 16, 17, 20, 21 and 22 of Block 26 by James J. Owens PLS 2884.

Pioche Townsite Re-Survey Plat Book A, Page 382 et. al. This map was plat, however it was determined that it could not be relied upon for Block 26.

Town of PIOCHE UPPER ONE THIRD copied by Dominick Belingheri, August 28, 1947 Recorded Plat Book A, Page 55. This map gives distances only on the front line of the parcels. Only a beginning bearing is given. Subsequent scaled bearings can not be reconciled with the properties.

Town of Pioche Upper One Third Plat Book A, Page 38. The original map, "Adopted as the Official Map of Pioche, Lincoln County, Nevada January 5, 1874" filed in the Assessor's Office B-4. This map goes to Lot 31 in Block 26 and no dist. & bearings.

This Map showing Lots 29 through 32 is based on the above listed existing maps and existing occupations as shown hereon.

The above referenced maps were examined carefully for information regarding the boundaries of properties on the south side of upper Main Street in Block 26. There are very few monuments found or indications of accurate boundary locations.

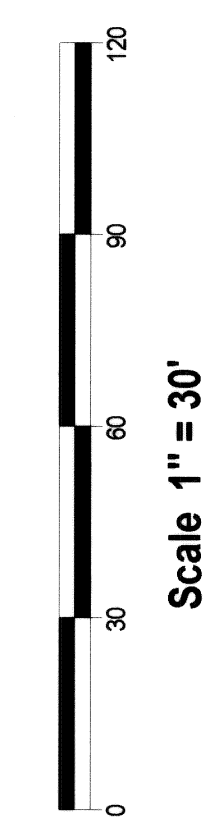
This map is based on (or proportioned as appropriate) the front line and the scaled depth dimensions as shown on Plat Book A, Page 55 on lots 30 through 37. A rock wall separates Lots 37 & 38, is the occupation boundary and accepted as the lot boundary.

The Lots beginning at the termination of the Owens Survey Monuments front line rebar monuments are proportioned through Lot 28.

The rear lot locations are based on the existing old steel "pin" at the rear of Lot 32 and scaled and proportioned distances from the Owens monument for Lot 22.

The depth of the subject lots is based on the scaled depth on the map of Plat Book A, Page 55.

Because of the absence of data which verifies various boundaries, this map represents a basis to locate Lots 29 through 32.



### RECORDER'S CERTIFICATE

File number **124763**  
 Recorded at the request of Lenard D. Smith  
 Filed in Plat Book **6** Page **122A**  
 This **17** day of **June** **2005**  
 at **8:54** p.m.  
 LESLIE BOUCHER, RECORDER  
 By **Amy Evans, Deputy**  
**12/2/05**

**RECORD OF SURVEY**  
 In Block 26 of the Townsite of Pioche,  
 Lincoln County, Nevada

For David M. Farley

