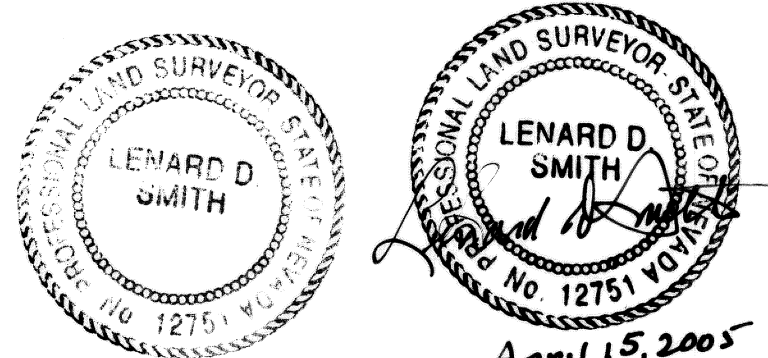


SURVEYOR'S CERTIFICATE

I, Lenard D. Smith, a Professional Land Surveyor licensed in the State of Nevada, certify that:

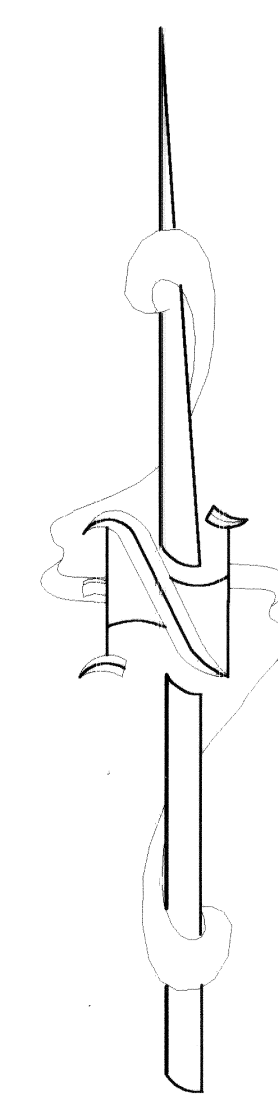
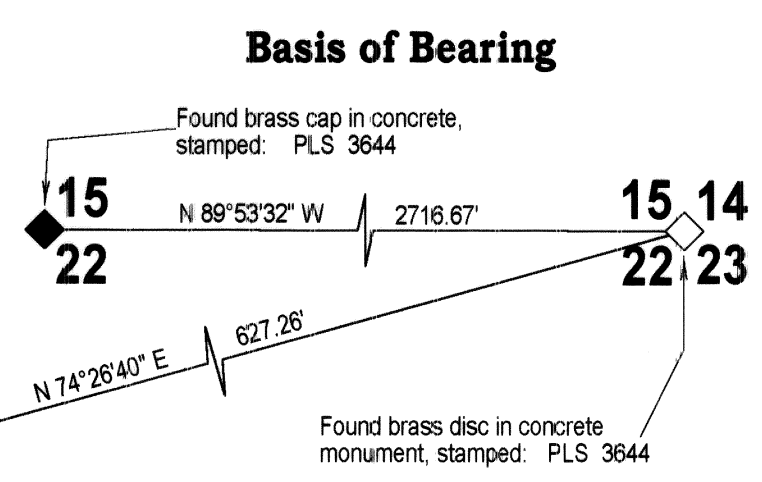
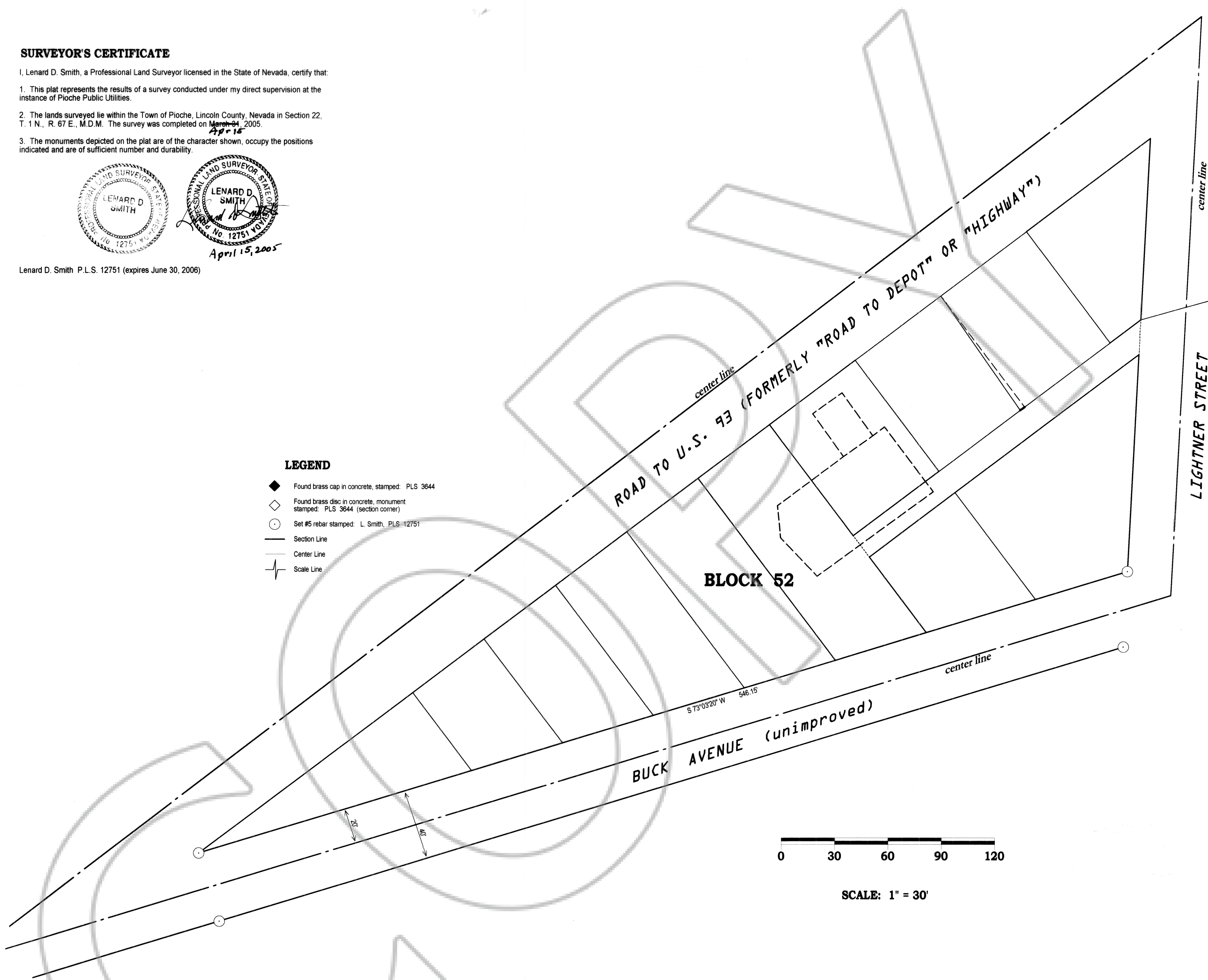
1. This plat represents the results of a survey conducted under my direct supervision at the instance of Pioche Public Utilities.
2. The lands surveyed lie within the Town of Pioche, Lincoln County, Nevada in Section 22, T. 1 N., R. 67 E., M.D.M. The survey was completed on April 15, 2005.
3. The monuments depicted on the plat are of the character shown, occupy the positions indicated and are of sufficient number and durability.



Lenard D. Smith P.L.S. 12751 (expires June 30, 2006)

LEGEND

- ◆ Found brass cap in concrete, stamped: PLS 3644
- ◇ Found brass disc in concrete, monument stamped: PLS 3644 (section corner)
- Set #5 rebar stamped: L. Smith, PLS 12751
- Section Line
- - - Center Line
- +— Scale Line



MAP NOTES AND REFERENCES:

This map is constructed using Bulloch Brothers Engineering Inc., map of the Town of Pioche, Recorded in Plat Book A, Page 382 (15 sheets) of Lincoln County, Nevada Records.
Plat Book A, Page 103

BASIS OF BEARINGS

This map is based upon the Bulloch Brothers Engineering Inc. Map of the Town of Pioche using their coordinates system as given on it, which gives the north line of the northwest quarter of Section 22, T. 1 N., R. 67 E., as N 89°53'32" W, said map is recorded in Plat Book A, Page 382 (15 sheets) of Lincoln County, Nevada Records



124324
RECORDER'S CERTIFICATE
File No. 124324
Recorded at the request of Lenard D. Smith
Filed in Plat Book C, Page 111
This 15th day of April, 2005
at 2:40 P.M.
LESUE BOUCHER, LINCOLN COUNTY
RECORDER
Lesue Boucher
By LS

RECORD OF SURVEY

FOR PIOCHE PUBLIC UTILITIES

Depicting Buck Avenue in the Townsite of Pioche, Lincoln County, Nevada

In Section 22, T. 1 N., R. 67 E., M.D.M.