

The Monument is located on the
Northern Boundary

Shamrock M&M I, LLC
Shamrock M&M II, LLC
Shamrock M&M III, LLC
Shamrock M&M IV, LLC
Shamrock M&M V, LLC
Shamrock M&M VI, LLC
Shamrock M&M VII, LLC
Shamrock M&M VIII, LLC
3301 N. University Ave. Suite 200
Provo, UT 84604

**S-S, T-2S
R-67E
MOM**

124225

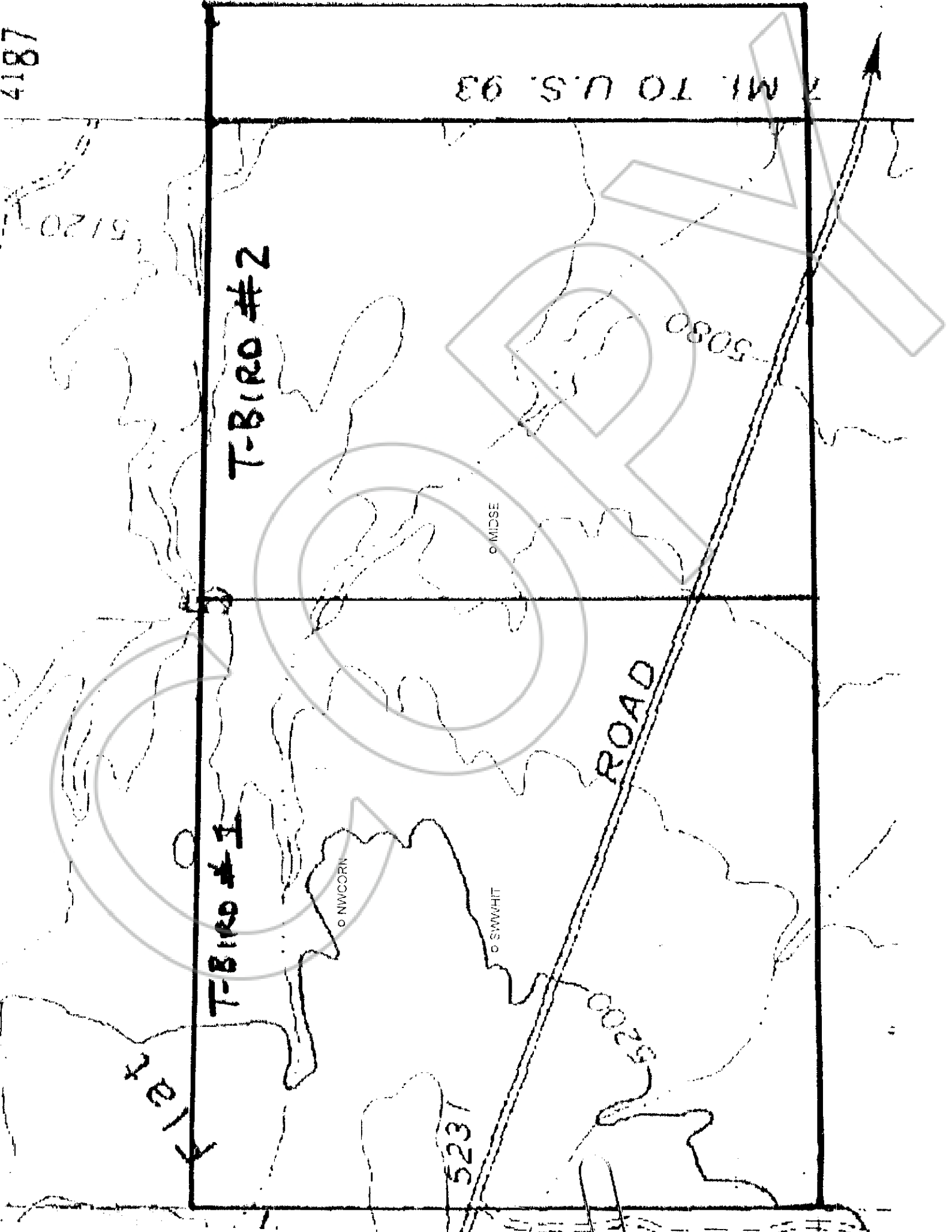
FILED FOR RECORDING
AT THE REQUEST OF

David W. Free

2005 MAR 30 PM 4 57

LINCOLN COUNTY RECORDER
FEE 324.00 DEPAR
LESLIE BOUCHER

4187



7 M. TO U.S. 89