

124159

FILED FOR RECORDING
AT THE REQUEST OF

David W. Free

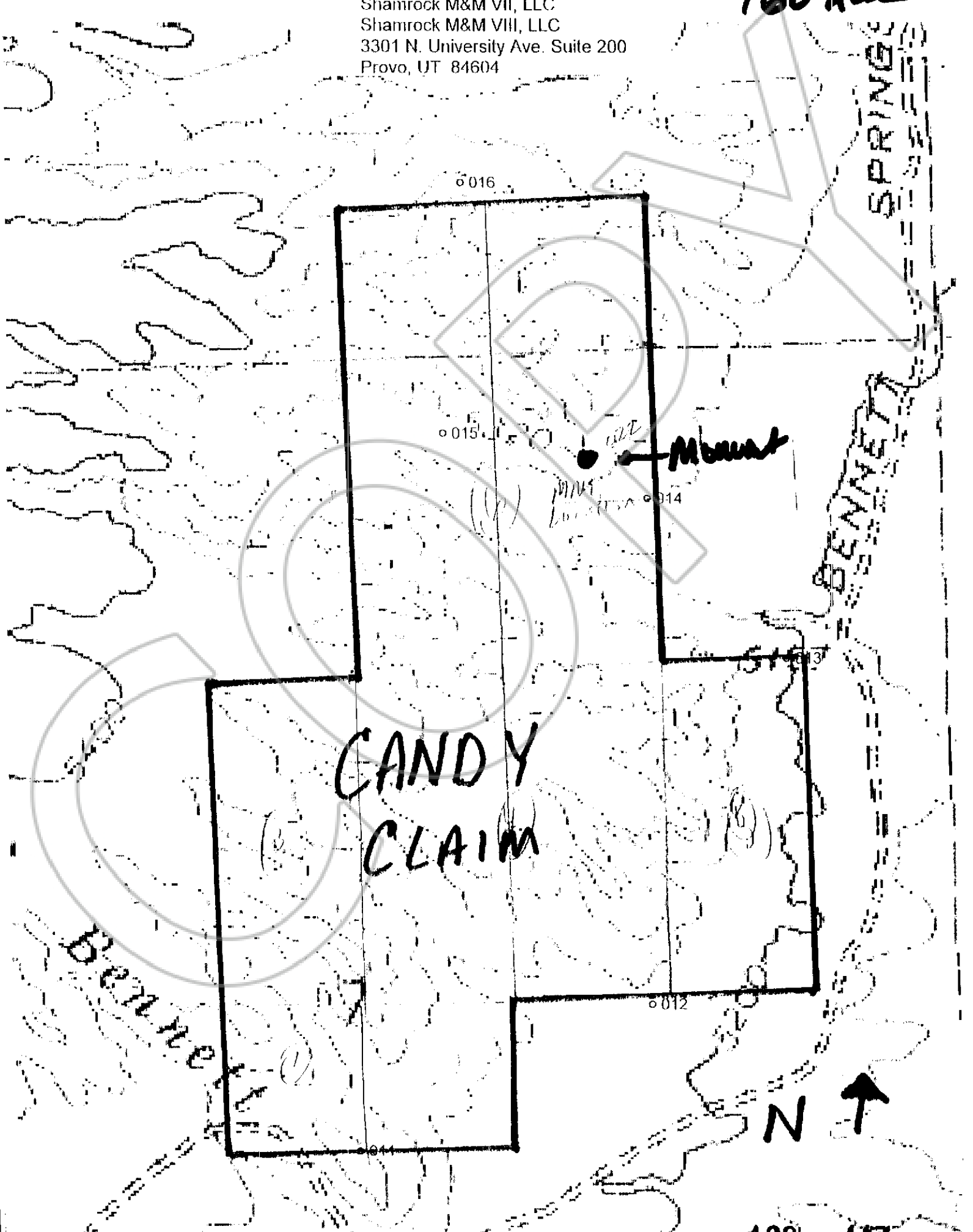
The Monument is located on the
Northerly Boundary

2005 MAR 30 PM 4 43

LINCOLN COUNTY RECORDS
FILED 2005 MAR 30 DEPT
LESLIE BOUCHER

Shamrock M&M I, LLC
Shamrock M&M II, LLC
Shamrock M&M III, LLC
Shamrock M&M IV, LLC
Shamrock M&M V, LLC
Shamrock M&M VI, LLC
Shamrock M&M VII, LLC
Shamrock M&M VIII, LLC
3301 N. University Ave. Suite 200
Provo, UT 84604

S7,
T-2S
R67E
MDM
160 Am



CANDY
CLAIM

Mount

N ↑