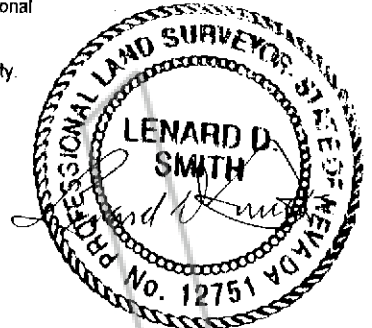


# CORNER RECORD

## SURVEYOR'S CERTIFICATE

I, Lenard D. Smith, a Professional Land Surveyor registered in the State of Nevada, certify that:

1. This corner record represents the establishment or restoration of a corner or accessory to a corner conducted under my direct supervision.
2. The monument or accessories perpetuated lie within Section 5, Township 1 South., Range 69 East, M.D.M., in Lincoln County, Nevada. The establishment was completed on September 2, 2003.
3. This corner record is recorded as required by N.R.S. 329 and complies with the Nevada Administrative Code for Professional Land Surveyors for Corner Records and any local ordinances in effect on the date that the establishment was completed.
4. The monuments found and/or set are of the character shown, occupy the positions indicated and are of sufficient durability.

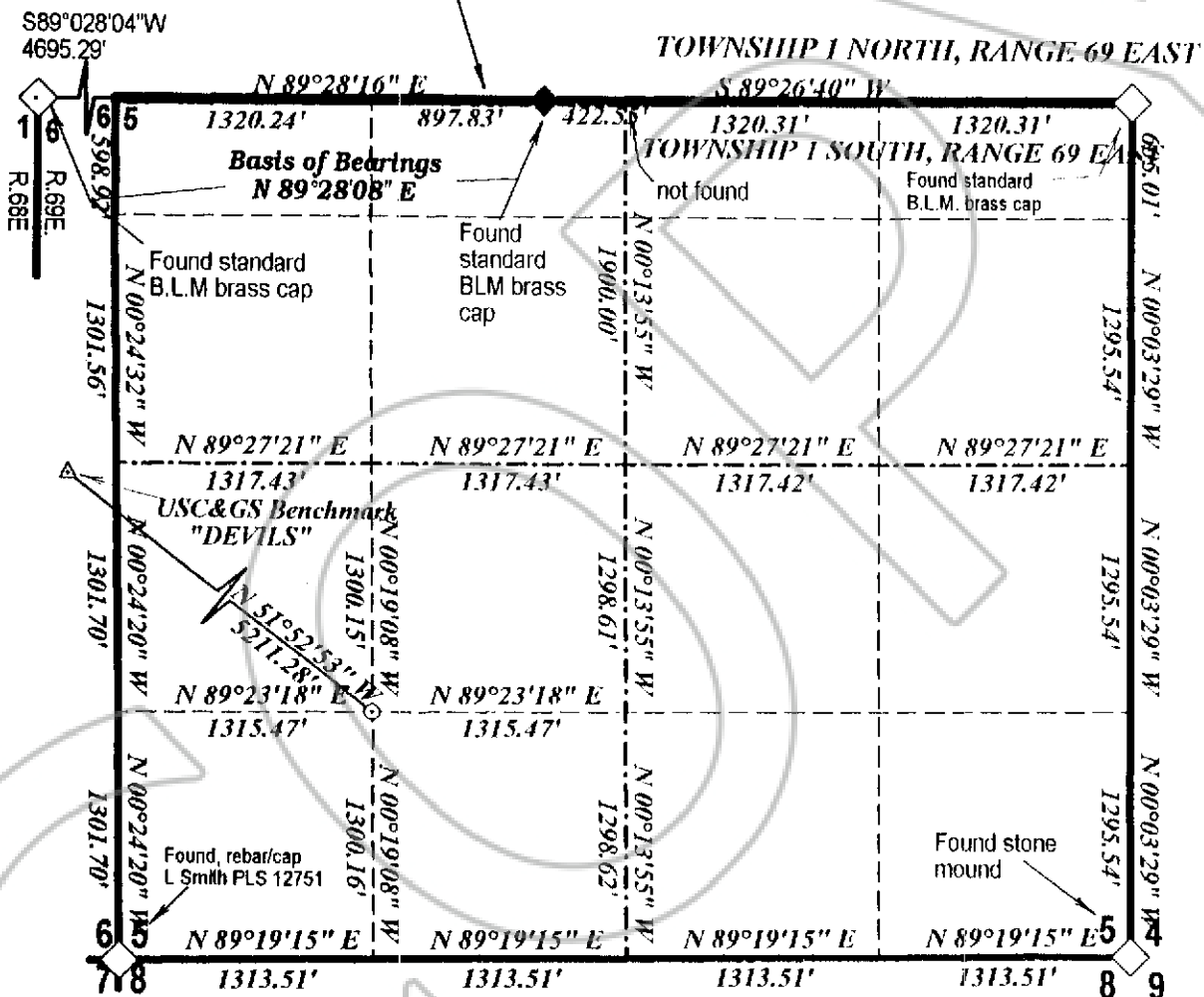


## BASIS OF BEARINGS

The Mount Diablo Base Line from northwest corner of Section 6 to the south quarter corner of Section 31 of T.1 N, R. 69 E as shown and given on the map, Plat Book B, Page 422, N 89°28'08" E.

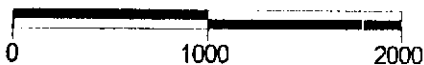
# MOUNT DIABLO BASELINE

Mar 14, 2005



## LEGEND

- Found Section Corner as described
- Found Quarter Section Corner as described
- Set #5 rebar with cap stamped L SMITH PLS 12751
- USGS Benchmark
- Baseline
- Section Line
- Quarter Section Line
- Sixteenth Section Line



SCALE: 1" = 1000'

## RECORDER'S CERTIFICATE

File number 124037

Recorded at the request of Lenard D. Smith

Filed in Book 198, Page 105

This 14 day of March, 2005  
at 2:43 p.m.

LESLIE BOUCHER, RECORDER

By Amy Ehrlich

Deputy

BOOK **198** PAGE **105**