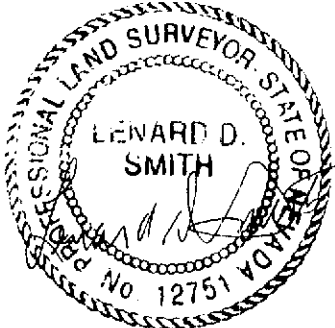


CORNER RECORD

SURVEYOR'S CERTIFICATE

I, Lenard D. Smith, a Professional Land Surveyor registered in the State of Nevada, certify that:

1. This corner record represents the establishment or restoration of a corner(s) or accessory(ies) to a corner(s) conducted under my direct supervision.
2. The monument or accessories perpetuated lie within Section 35, Township 1 North Range 69 East, M.D.M., in Lincoln County, Nevada. The establishment, or restoration was completed on August 26, 2004.
3. This corner record is recorded as required by N.R.S. 329 and complies with the Nevada Administrative Code for Professional Land Surveyors for Corner Records and any local ordinances in effect on the date that the establishment or restoration was completed.
4. The monument(s) or witness monument(s) and accessories found are of the character shown, occupy the positions indicated and are of sufficient durability.

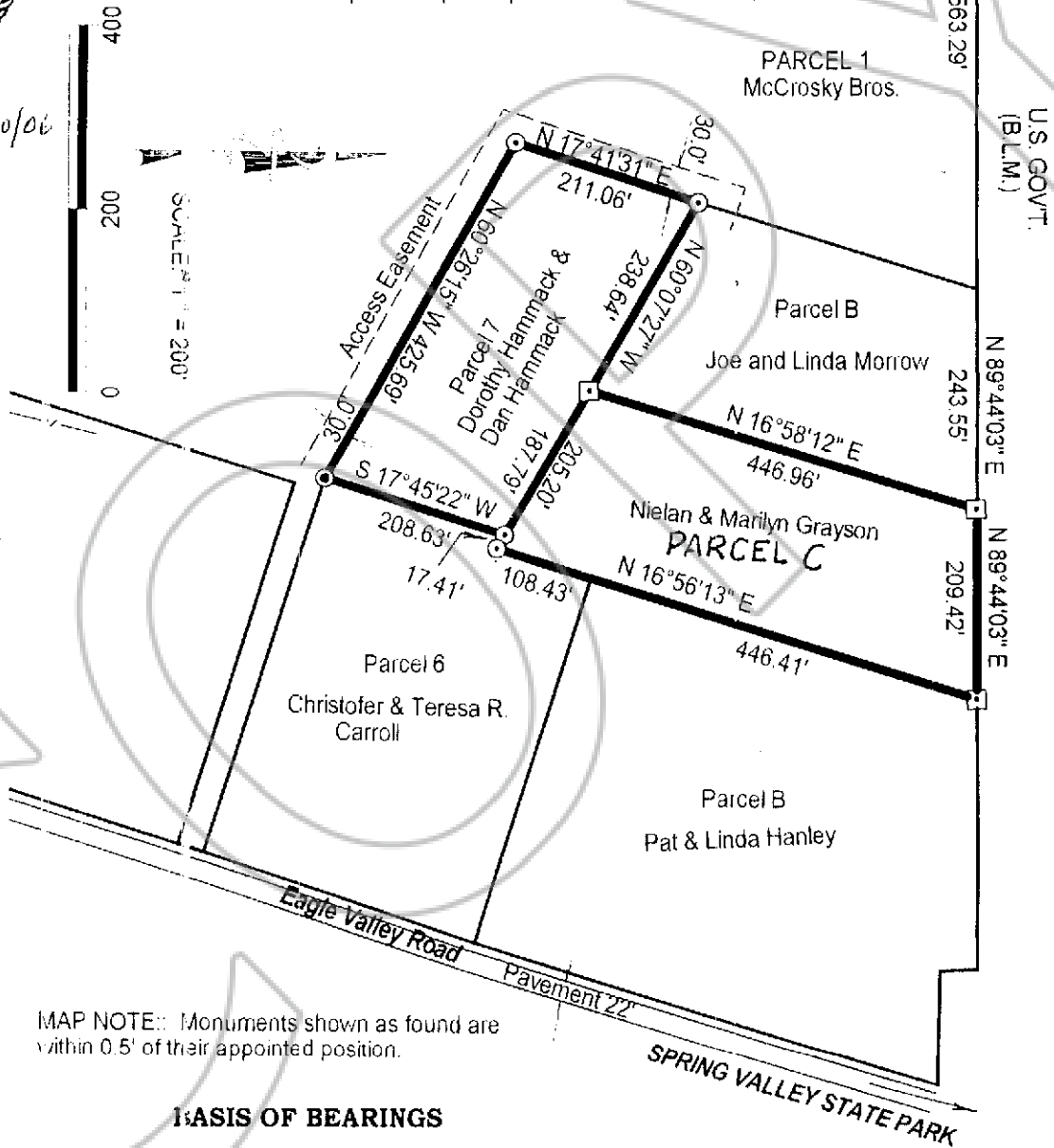


Lenard D. Smith
PLS 12751 Exp 6/30/06

S 01°28'17" E 2634.75'
BASIS OF BEARINGS

LEGEND

- Found rebar with plastic cap stamped PLS 6204
- Found rebar only
- Set #5 rebar with plastic cap stamped L SMITH PLS 12751



MAP NOTE: Monuments shown as found are within 0.5' of their appointed position.

BASIS OF BEARINGS

The sixteenth line as shown on the Parcel Map Recorded Plat Book A, Page 291 of Lincoln County, Nevada Records.

MAP REFERENCES

Parcel Maps Plat Book A, Pages 288, 291

RECORDER'S CERTIFICATE

File number 123089

Recorded at the request of Lenard D. Smith

Filed in Book 191, Page 286

This 20th day of Sept, 2004

at 1:06 p.m.

LESLIE BOUCHER, RECORDER

By J. Louren Deputy
40

