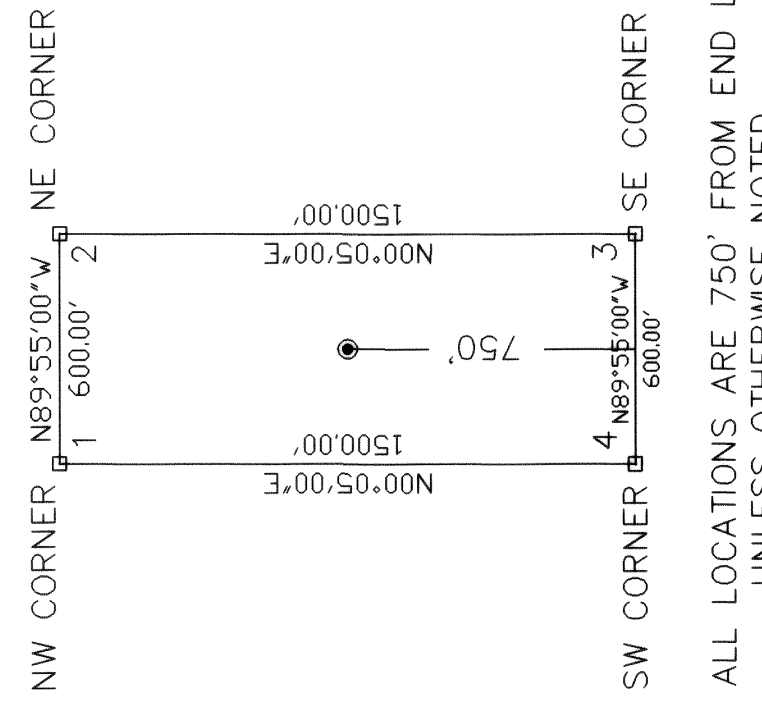


TYPICAL CLAIM DIMENSIONS AND CORNER NUMBERING UNLESS OTHERWISE NOTED



ALL LOCATIONS ARE 750' FROM END LINE UNLESS OTHERWISE NOTED

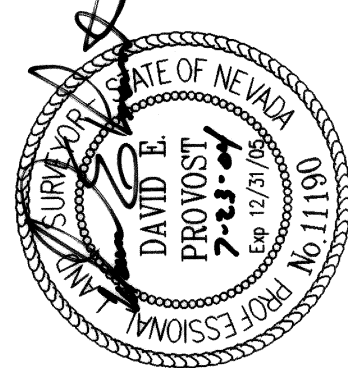
LEGEND

- LOCATION MONUMENT 1.5" X 1.5" X 4' LONG WOOD POST
- SET CORNERS 1.5" X 1.5" X 4' LONG WOOD POST

LOCATOR: PARX, LLC
129 DOUBLE FIRE TRAIL
GEORGETOWN, TX 78628

LOCATION DATES: MAY 10, 2004

Tie to Road "y" Shown in NE 1/4 Section 16, T.4SR59E MOUNT IRISH SE, NEVADA 7.5' Topographic Map



12273
DAVID E. PROVOST
PROFESSIONAL SURVEYOR
STATE OF NEVADA
LICENSE NO. 12273
EXPIRES 12/31/2010

Leslie Baueber, Deputy
County Recorder
Lincoln County, Nevada

LODE CLAIM MAP FOR PARX, LLC.

Georgetown, Texas

CLAIMS LOCATED WITHIN SE1/4 SECTION 7;
SW 1/4 SECTION 8; W1/2; SE1/4 SECTION 17;
N 1/2 SECTION 20; T4SR59E, M.D.B.&M.

LINCOLN COUNTY, PAHRANAGAT MINING DISTRICT

MOUNTAIN HIGH SURVEYING
1500 MURRY ST.
ELY, NEVADA 89301

PK 189 PAGE 37

PH: (775)289-6722

