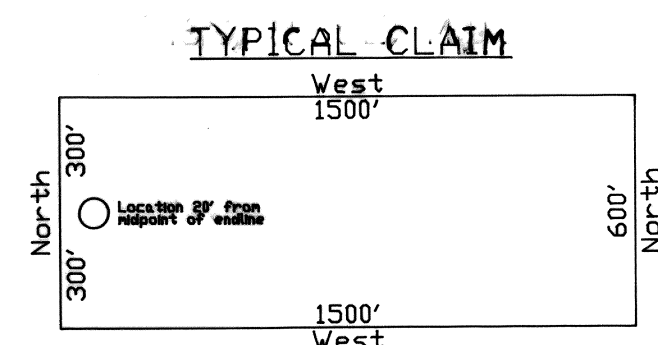
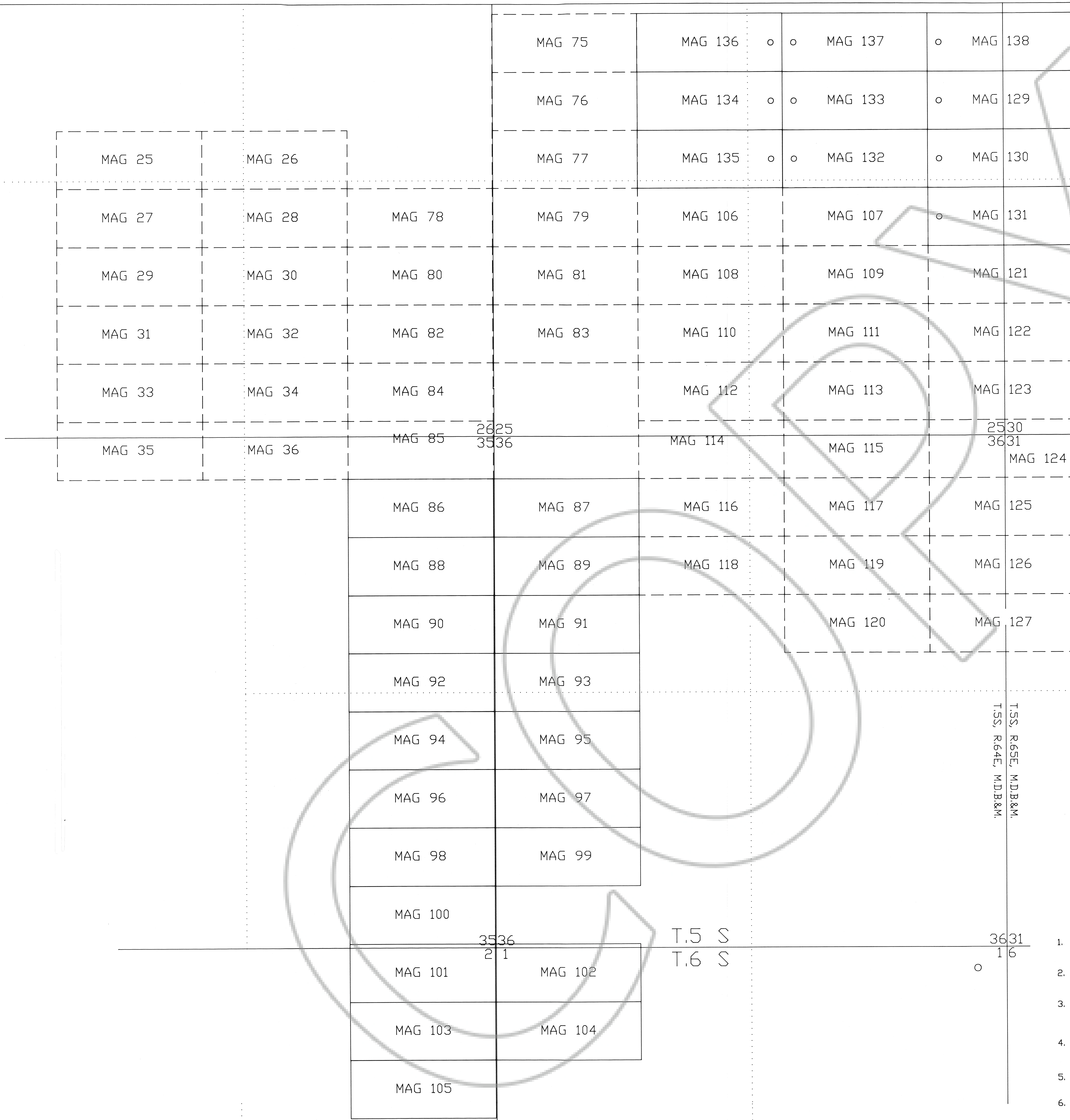
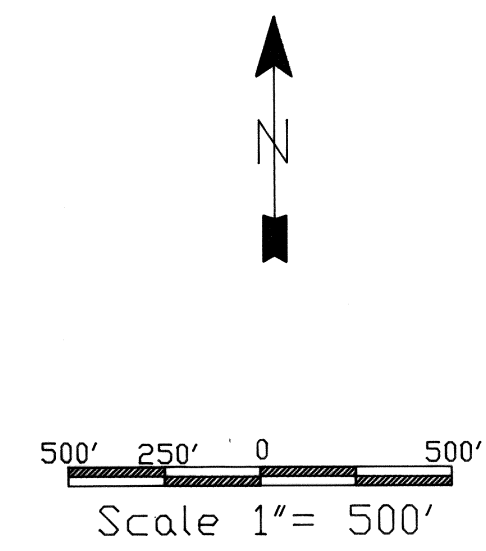


NE corner of MAG 138 is approx 4360 feet North and 6000 feet East from the NE corner of Section 35, T5S, R64E, M.D.B. & M.



121872
 FILED AND RECORDED AT REQUEST OF
 David Deemore
 55 MINUTES PAST 5 O'CLOCK
 AT 11:11 P.M. 12/31/03 OF OFFICIAL
 RECORDS PAGE 366 LINCOLN
 COUNTY, NEVADA 154
 Leslie Baucher
 COUNTY RECORDER
 By Sonora Stevens Deputy



1. All claims are 600 feet by 1500 feet with Location Monuments 20 feet from the end lines unless otherwise noted.
2. All Corners and Location Monuments for the claims are 2' x 2' x 4' long wood posts with aluminum tags denoting their position.
3. The claims were located by:
 Beta Minerals USA Inc.
 3328 Leland Rd.
 Sunny Valley, OR 97497
4. MAG 129 - 135 were located on December 9, 2003
 MAG 86 - 105 were located on December 10, 2003
 MAG 136 - 138 were located on December 11, 2003
5. There are a total of 30 new MAG claims shown in solid line.
6. Additional claims shown in dashed line are senior claims belonging to Beta Minerals USA Inc.

BETA MINERALS USA	
DelMar Project	
MAG CLAIMS	
Lincoln Co. Nevada	
2003 Claim Block	
Beta Minerals USA Inc 3328 Leland Rd. Sunny Valley, OR 97497	Revision: 12/31/03 Drafted: Jay D Wilson

BOOK 183 PAGE 366