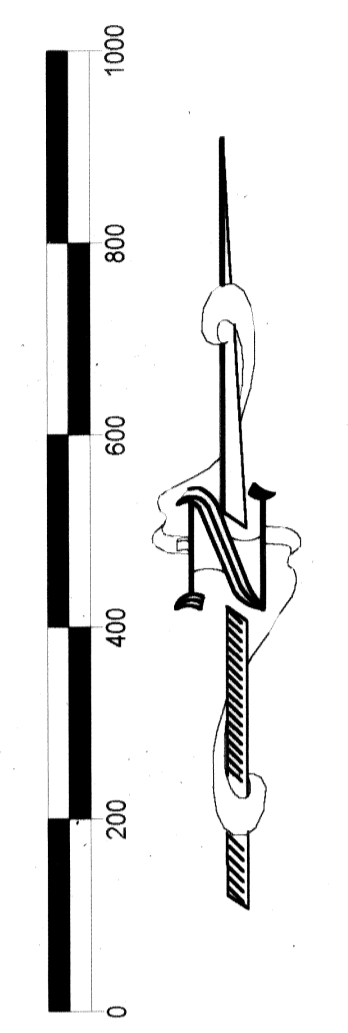


- LEGEND**
- ⊕ Set #5 rebar with aluminum cap stamped L SMITH PLS 12751
 - Set #5 rebar with plastic cap stamped L SMITH PLS 12751
 - ⊗ Set P-K nail with disk in edge of pavement stamped L SMITH PLS 1275
 - Found #4 rebar with cap stamped PLS 6498 except as noted
 - Parcel boundary line
 - Township line
 - Section line
 - - - Quarter Section line
 - - - Sixteenth section line
 - - - Nevada Dept. of Transp. Right of Way boundary line or Union Pacific Railroad easement boundary line
 - - - N.D.O.T. centerline as built
 - - - N.D.O.T. centerline designed (Project No. S 633-1)
 - - - Overhead power line
 - - - Fence line
 - - - Scaled line
 - - - Irrigation ditch
 - - - Drain (pickup) ditch



North quarter corner not found. Proportioned from northwest corner of Section 3

U.S. GOVERNMENT (Bureau of Land Management)

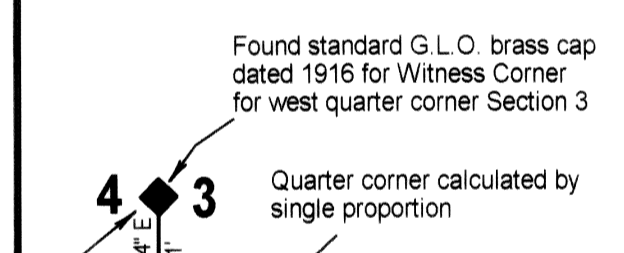
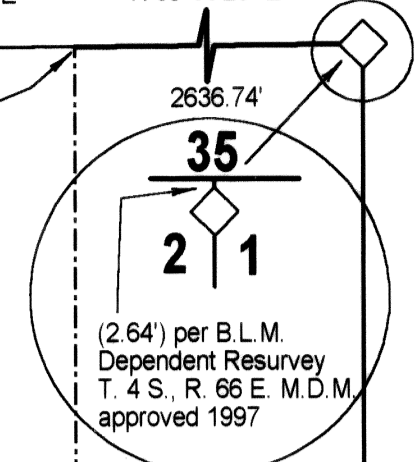
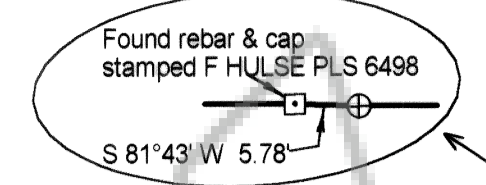
U.S. GOVERNMENT (Bureau of Land Management)

U.S. GOVERNMENT (Bureau of Land Management)

U.S. GOVERNMENT (Bureau of Land Management)

U.S. GOVERNMENT (Bureau of Land Management)

Original corner not found. Set #5 rebar with 2" aluminum cap to reestablish Section corner on First Parallel South to distance from the standard corner Sections 34/35 per UP Railroad map.



G.L.O. record N 01°13'34" E 2665.17' Measured N 01°13'34" E 2625.08'

MAP OF LARGE PARCELS SHEET ONE OF TWO SHEETS

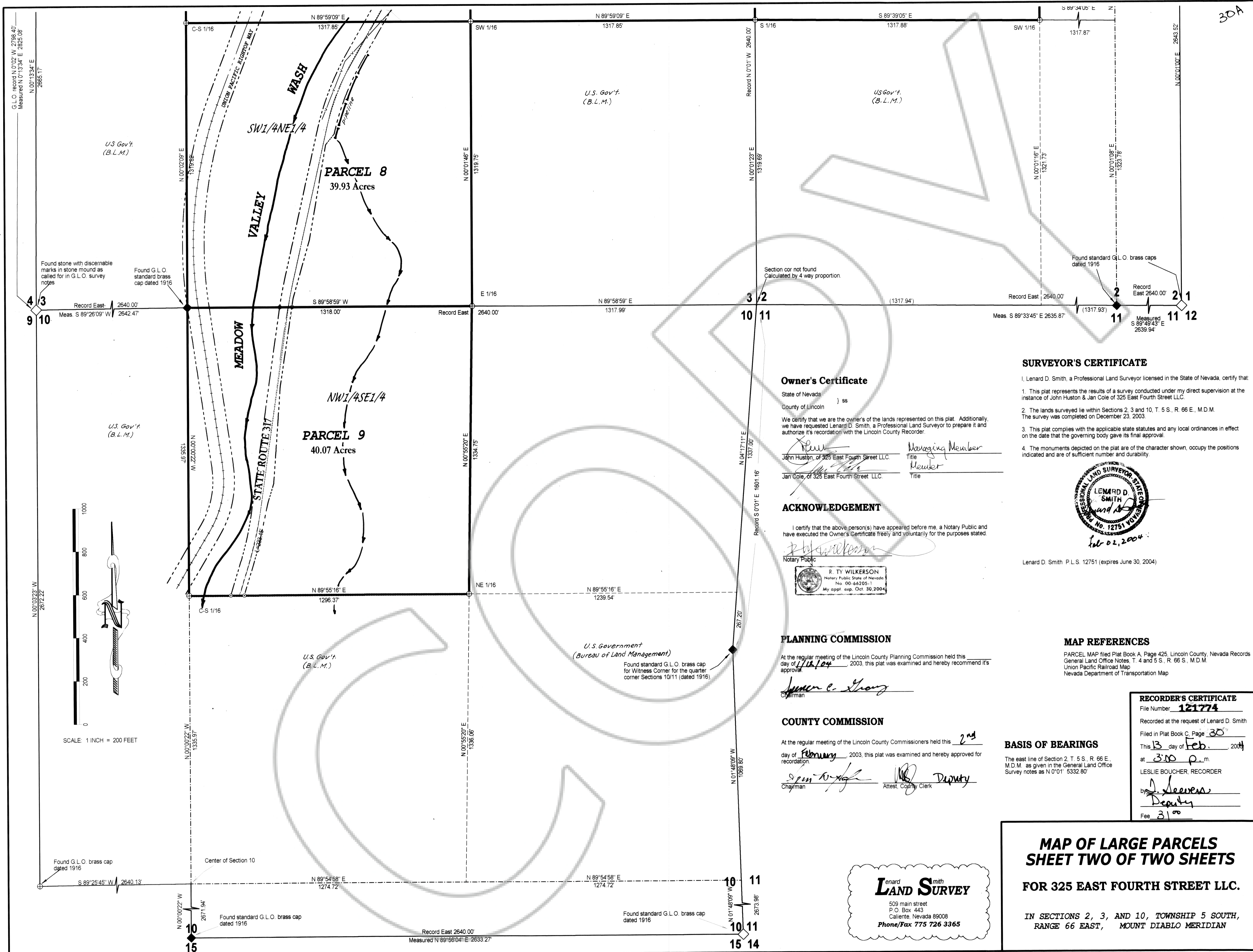
FOR 325 EAST FOURTH STREET LLC.

IN SECTIONS 2, 3, AND 10, TOWNSHIP 5 SOUTH, RANGE 66 EAST, MOUNT DIABLO MERIDIAN

A.P.N. 014-010-02 & 04

BASIS OF BEARINGS
 G.L.O. record N 00°10'16" E 5332.8' Measured 5337.27'

U.S. GOVT. (B.L.M.)
 S 89°34'05" E 1317.67'



30A

Found stone with discernable marks in stone mound as called for in G.L.O. survey notes

Found G.L.O. standard brass cap dated 1916

U.S. Gov't (B.L.M.)

U.S. Gov't (B.L.M.)

U.S. Gov't (B.L.M.)

U.S. Gov't (B.L.M.)

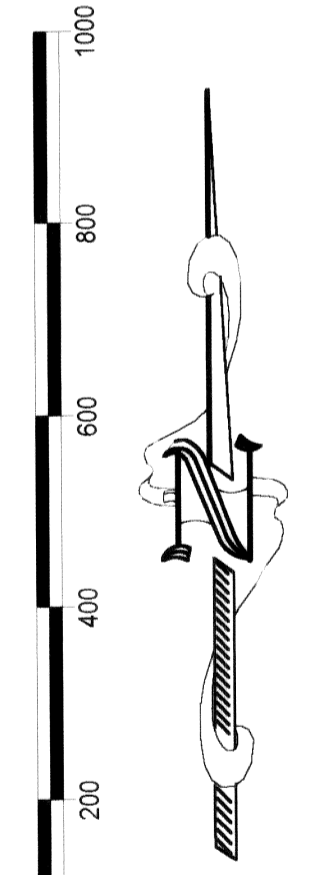
U.S. Government (Bureau of Land Management)

Found standard G.L.O. brass cap for Witness Corner for the quarter corner Sections 10/11 (dated 1916)

Section cor not found Calculated by 4 way proportion

Found standard G.L.O. brass caps dated 1916

Measured S 89°49'43" E 2639.94'



SCALE: 1 INCH = 200 FEET

Owner's Certificate

State of Nevada) ss
 County of Lincoln)
 We certify that we are the owners of the lands represented on this plat. Additionally we have requested Lenard D. Smith, a Professional Land Surveyor to prepare it and authorize it's recordation with the Lincoln County Recorder.
 John Huston, of 325 East Fourth Street LLC Managing Member
 Jan Cole, of 325 East Fourth Street LLC Member

ACKNOWLEDGEMENT

I certify that the above person(s) have appeared before me, a Notary Public and have executed the Owner's Certificate freely and voluntarily for the purposes stated.

R. Ty Wilkerson
 Notary Public
 R. TY WILKERSON
 Notary Public State of Nevada
 No. 00-64205-1
 My appl. exp. Oct. 30, 2004

PLANNING COMMISSION

At the regular meeting of the Lincoln County Planning Commission held this day of February, 2003, this plat was examined and hereby recommend it's approval.

James C. Strong
 Chairman

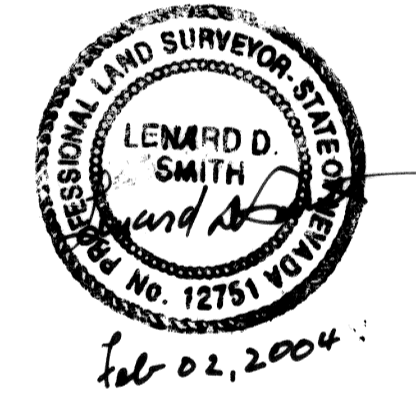
COUNTY COMMISSION

At the regular meeting of the Lincoln County Commissioners held this 2nd day of February, 2003, this plat was examined and hereby approved for recordation.

Spencer W. ... Chairman
... Attest, County Clerk

SURVEYOR'S CERTIFICATE

I, Lenard D. Smith, a Professional Land Surveyor licensed in the State of Nevada, certify that:
 1. This plat represents the results of a survey conducted under my direct supervision at the instance of John Huston & Jan Cole of 325 East Fourth Street LLC.
 2. The lands surveyed lie within Sections 2, 3 and 10, T. 5 S., R. 66 E., M.D.M. The survey was completed on December 23, 2003.
 3. This plat complies with the applicable state statutes and any local ordinances in effect on the date that the governing body gave its final approval.
 4. The monuments depicted on the plat are of the character shown, occupy the positions indicated and are of sufficient number and durability.



Lenard D. Smith P.L.S. 12751 (expires June 30, 2004)

MAP REFERENCES

PARCEL MAP filed Plat Book A, Page 425, Lincoln County, Nevada Records
 General Land Office Notes, T. 4 and 5 S., R. 66 E., M.D.M.
 Union Pacific Railroad Map
 Nevada Department of Transportation Map

RECORDER'S CERTIFICATE

File Number 121774
 Recorded at the request of Lenard D. Smith
 Filed in Plat Book C, Page 30
 This 13 day of Feb., 2004
 at 3:10 p.m.
 LESLIE BOUCHER, RECORDER
Leslie Boucher
 Deputy
 Fee 31.00

BASIS OF BEARINGS

The east line of Section 2, T. 5 S., R. 66 E., M.D.M. as given in the General Land Office Survey notes as N 0°01' 53.32" 80'

Lenard Smith LAND SURVEY
 509 main street
 P.O. Box 443
 Caliente, Nevada 89008
 Phone/Fax 775 726 3365

MAP OF LARGE PARCELS SHEET TWO OF TWO SHEETS FOR 325 EAST FOURTH STREET LLC.
 IN SECTIONS 2, 3, AND 10, TOWNSHIP 5 SOUTH, RANGE 66 EAST, MOUNT Diablo MERIDIAN