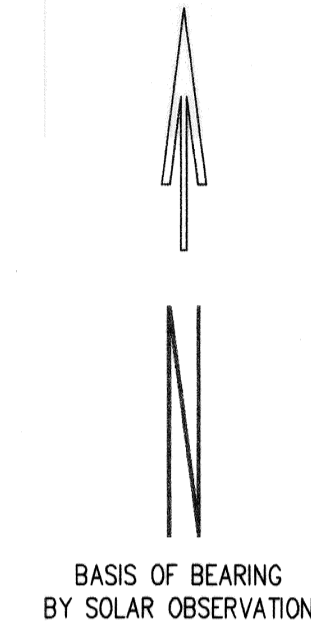
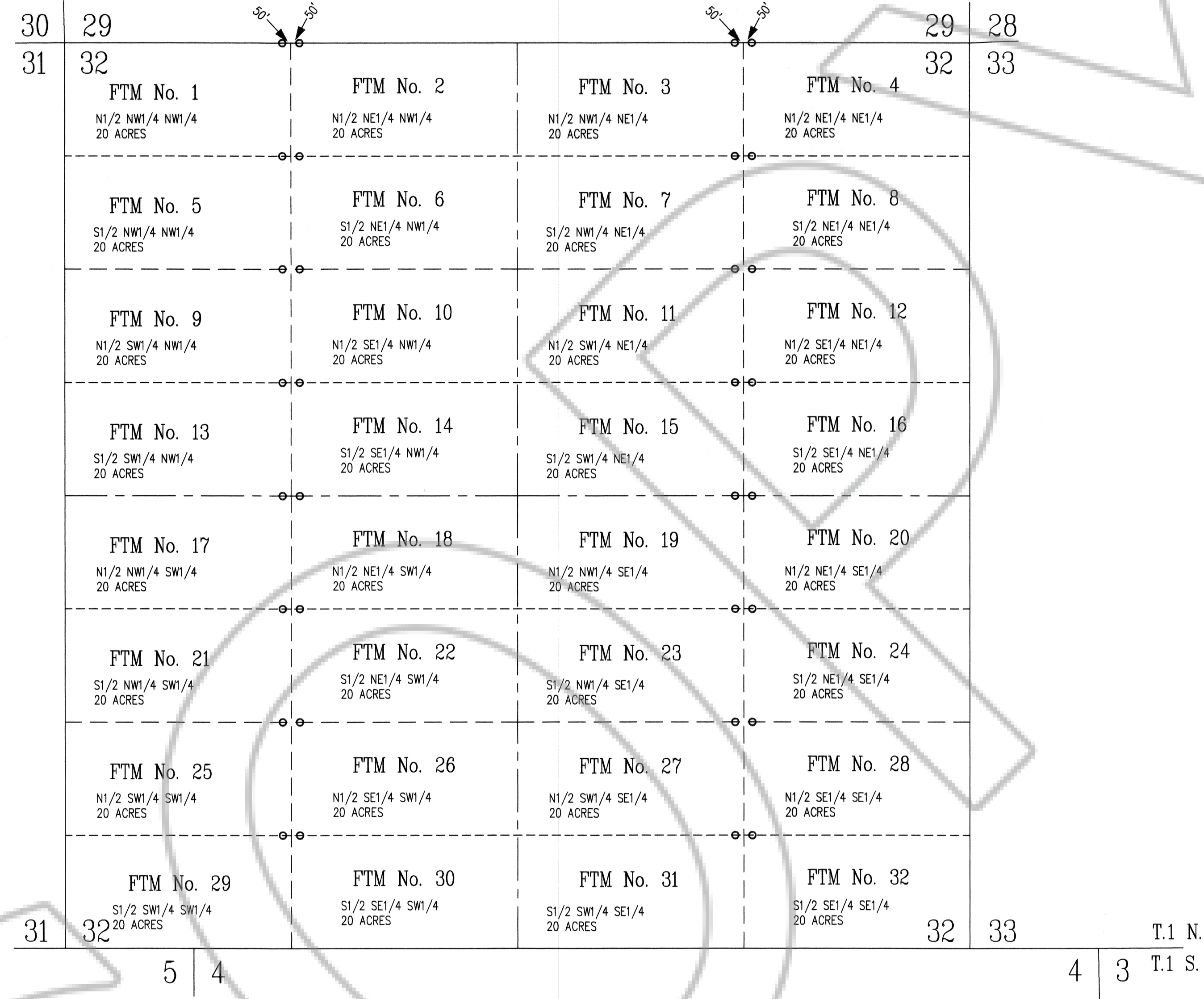


T.1 N., R.67 E., M.D.B.&M.



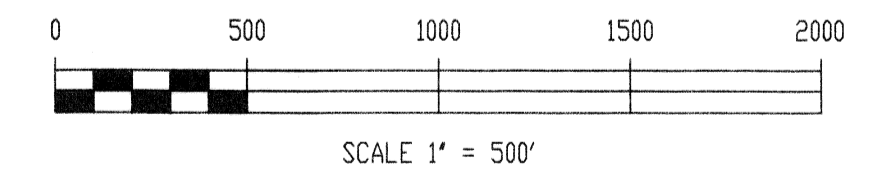
Located by Richard W. Forman P.E., P.L.S.  
298 E. 11th Street  
Ely, Nevada 89301

Agent for Franklin T. McNeil  
3729 Van Buren Blvd.  
Riverside, California 92503

○ Set 2" x 2" x 4" long post

FTM Nos. 11, 12 and 15 through 32  
Located on January 13, 2003  
Ely, Nevada 89301

FTM Nos. 1 through 10, 13 and 14  
Located on January 14, 2003



No. **119974**  
FILED AND RECORDED AT REQUEST OF  
*Richard W. Forman*  
*April 11, 2003*  
12:23 MINUTES PAST 3 O'CLOCK  
12:11 IN BOOK 116 OF OFFICIAL  
RECORDS, PAGE 116 LINCOLN  
COUNTY, NEVADA  
*Leslie Boucher*  
COUNTY CLERK  
*By: Teresa Steeles Deputy*  
6/4/03

JOB #0301007M

**BFI** BOUNDY & FORMAN, INC.  
ELY, NEVADA APRIL, 2003  
CIVIL ENGINEERS, LAND & WATER RIGHT SURVEYORS

MAP SHOWING  
FTM Nos. 1 THROUGH 32  
PLACER MINING CLAIMS  
FOR *IN ELY MINING DISTRICT*  
BY FRANKLIN T. McNEIL  
IN SECTION 32., T.1 N., R.67 E., M.D.B. & M.  
LINCOLN COUNTY, NEVADA