



CROSS & BOW LODE CLAIM MAP

CLAIM MAP

T5N/T4N, R63E/R64E, MDB&M

LINCOLN COUNTY, NEVADA

KEN BROOK & ED RUGG

2305 PLEASURE DRIVE

RENO, NEVADA 89509

Drawn By: OKT Date: JANUARY 2003

Sheet 2 of 2

Survey and Map by:
MINERAL EXPLORATION SERVICES, LTD.
5655 Riggins Court, Suite 15, Reno, NV 89502
(775) 954-1082 Fax: (775) 829-6882

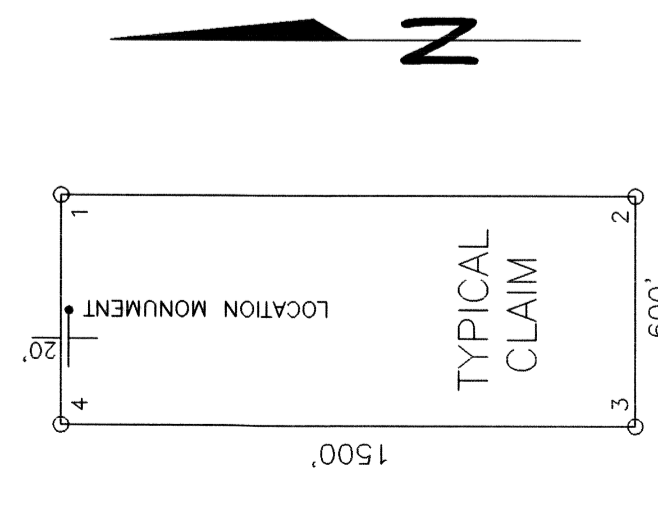
- EXPLANATION**
- Location Monument
 - Claim Corner Monument
 - Projected Section Line
 - ◇ Survey Corner Monument Projected From BLM GCDB

TIE POINT:

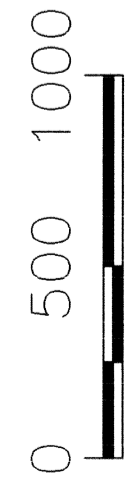
The NE corner of CROSS 70 is located approximately 5529 feet south and 3537 feet west of the northeast corner of section 1, T4N, R63E, MDB&M.

CLAIM LOCATION DATES:

- CROSS 1-90, 99-103, 105-120: 01/22/2003
- CROSS 91-98, 121-125, 128-143, 145, 146, 148, 150-165: 01/23/2003
- BOW 104-112, 116: 01/23/2003
- CROSS 166, 167: 01/24/2003



ALL CLAIMS ARE 1500' X 600' UNLESS OTHERWISE NOTED. MONUMENTS ARE 2" X 2" X 4" WOODEN POSTS.



SCALE
U.S. Survey Foot