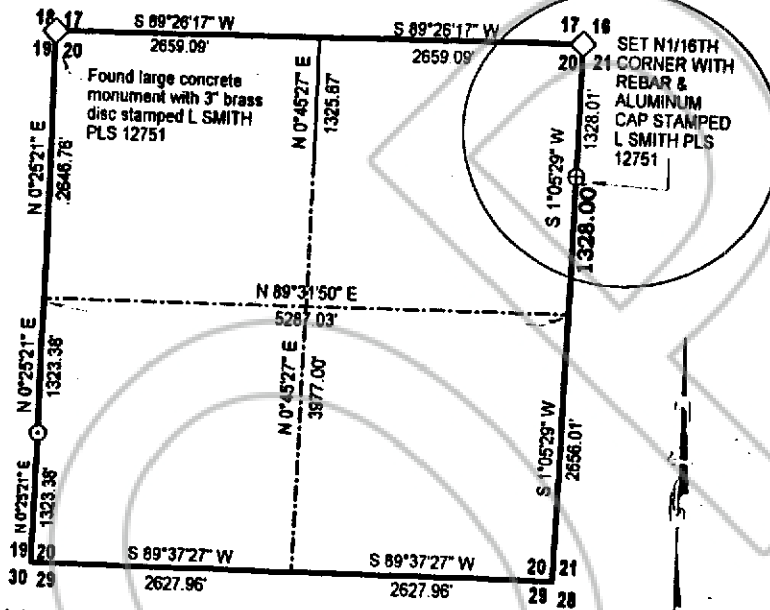


Lincoln County

CORNER RECORD

SURVEYOR'S CERTIFICATE

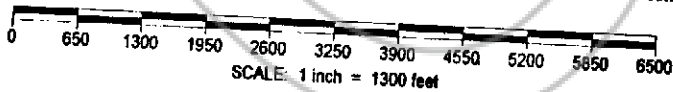
1. Lenard D. Smith, a Professional Land Surveyor registered in the State of Nevada, certify that:
1. This corner record represents the establishment or restoration of a corner or accessory to a corner conducted under my direct supervision.
2. The monument or accessories perpetuated lie within Section 20, Township 2 S, Range 68 E, M.D.M., Lincoln County, Nevada. The establishment or restoration was completed on October 16, 2002.
3. This corner record is recorded as required by NRS 329 and complies with the Nevada Administrative Code Standards of Practice for Professional Land Surveyors for Corner Records and any local ordinances in effect of the date that the establishment or restoration was completed.
4. The monument or witness monument and accessories found are of the character shown, occupy the positions indicated and are of sufficient durability.



This is a subsequent Corner Record to the Corner Record filed Document No. 118765, Book 166, Page 393 through 395 in which the proportionment measurements are given.

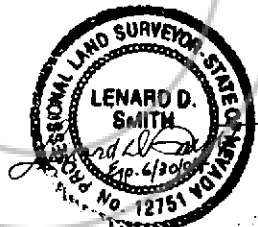
**TOWNSHIP 2 SOUTH, RANGE 68 EAST, M.D.M.**

The Basis of Bearings are based on a survey using static G.P.S. system model GEOID 99 datum.



LEGEND

- ◊ Found Section Corner as described.
- ◆ Found Quarter Section Corner as described



Nov 4, 2002

RECORDERS CERTIFICATE

File No. 119220

Recorded at the request of  
Lenard D. Smith

Date Dec. 16, 2002 at 12:05pm

Filed Book 168 Page 509  
Lincoln County, Nevada

Leslie Boucher, Recorder

By Janice Stevens Deady  
K10