

CORNER RECORD

PAGE ONE OF TWO

SURVEYOR'S CERTIFICATE

I, Lenard D. Smith, a Professional Land Surveyor registered in the State of Nevada, certify that:

- 1. This corner record represents the establishment or restoration of a corner or accessory to a corner conducted under my direct supervision.
- 2. The monument or accessories perpetuated lie within Section(s) 17 & 20, Township 2 South, Range 68 East, M.D.M., in Lincoln County, Nevada. The establishment, or restoration was completed on August 22, 2002.
- 3. This corner record is recorded as required by N.R.S. 329 and complies with the Nevada Administrative Code for Professional Land Surveyors for Corner Records and any local ordinances in effect on the date that the establishment or restoration was completed.
- 4. The monument(s) or witness monument(s) and accessories found are of the character shown, occupy the positions indicated and are of sufficient durability.



Sept. 05, 2002 Exp 6-30-04

SHOWING SUBDIVISIONS OF SECTIONS 17 AND 20 OF TOWNSHIP 2 SOUTH, RANGE 68 EAST, MOUNT DIABLO MERIDIAN, AS PROPORTIONED FROM THE NEAREST FOUND CORNERS.

ALSO SHOWN ARE CORNERS SET WITHIN SAID SECTIONS.

* NOTE: The B.L.M. brass caps found in Section 17 are the results of a Dependent Resurvey of which has not as yet been approved.

LEGEND

- ◇ Found Section Corner as described
- ◆ Found Quarter Section Corner as described
- ⊙ Set #5 rebar with cap stamped L SMITH PLS 12751
- M Our measurement
- R G.L.O. record measurement (recorded in Chains, shown here in feet)

BASIS OF BEARINGS

Bearings are based on survey using static G.P.S. system model GEOID99 datum.

MAP, SEE PAGE TWO

RECORDER'S CERTIFICATE

File number _____

Recorded at the request of Lenard D. Smith

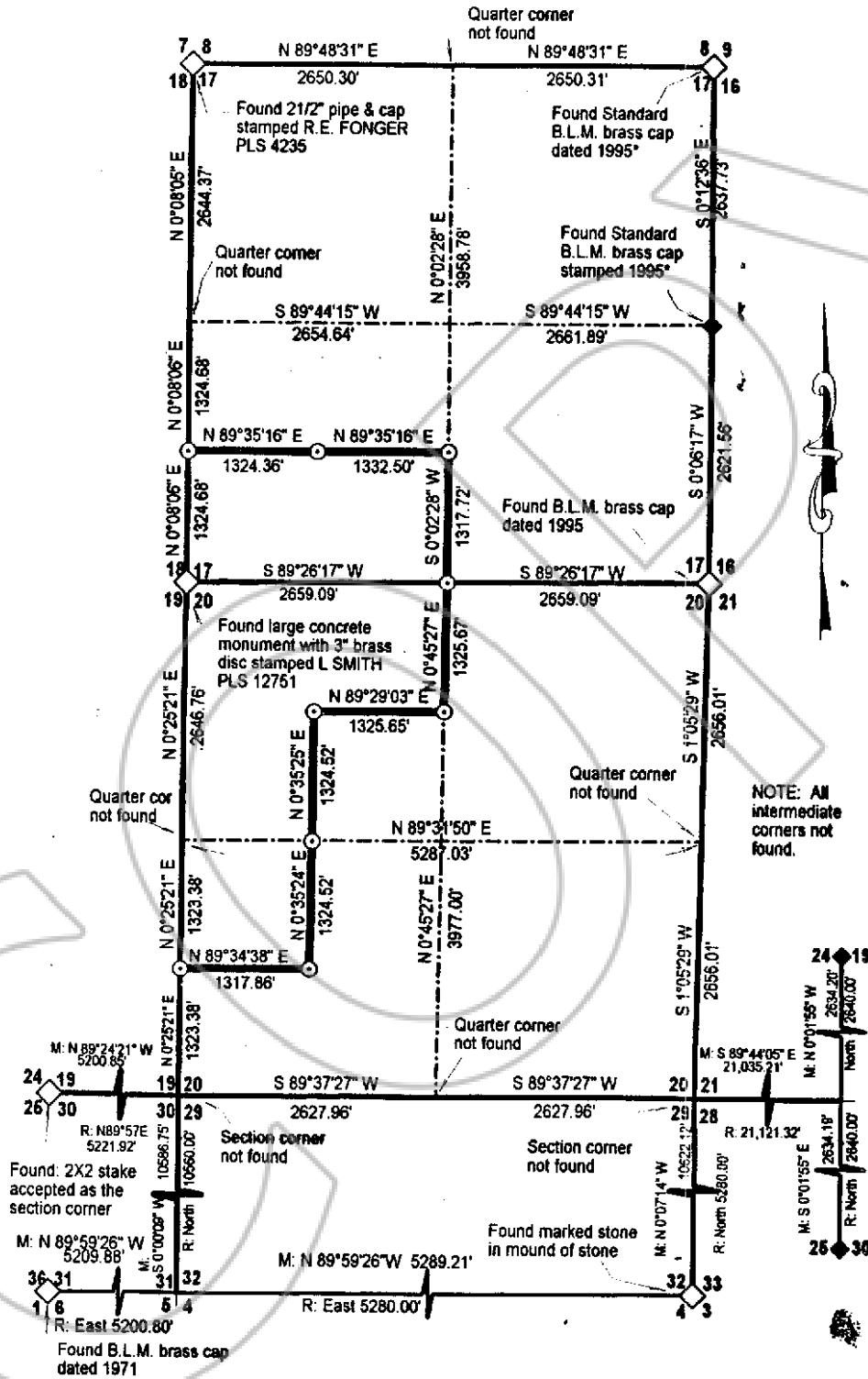
Filed in Book _____, Page _____

This _____ day of _____

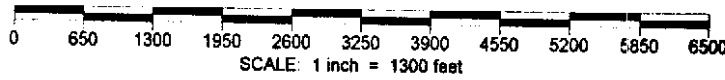
at _____, m.

LESLIE BOUCHER, RECORDER

By _____



TOWNSHIP 2 SOUTH, RANGE 68 EAST, M.D.M.



COPY

118765

FILED FOR RECORDING
AT THE REQUEST OF

Lenard D Smith

2002 SEP 5 PM 12 58

LINCOLN COUNTY RECORDER
FEE \$15.00
DEP
LESLIE BOUCHER