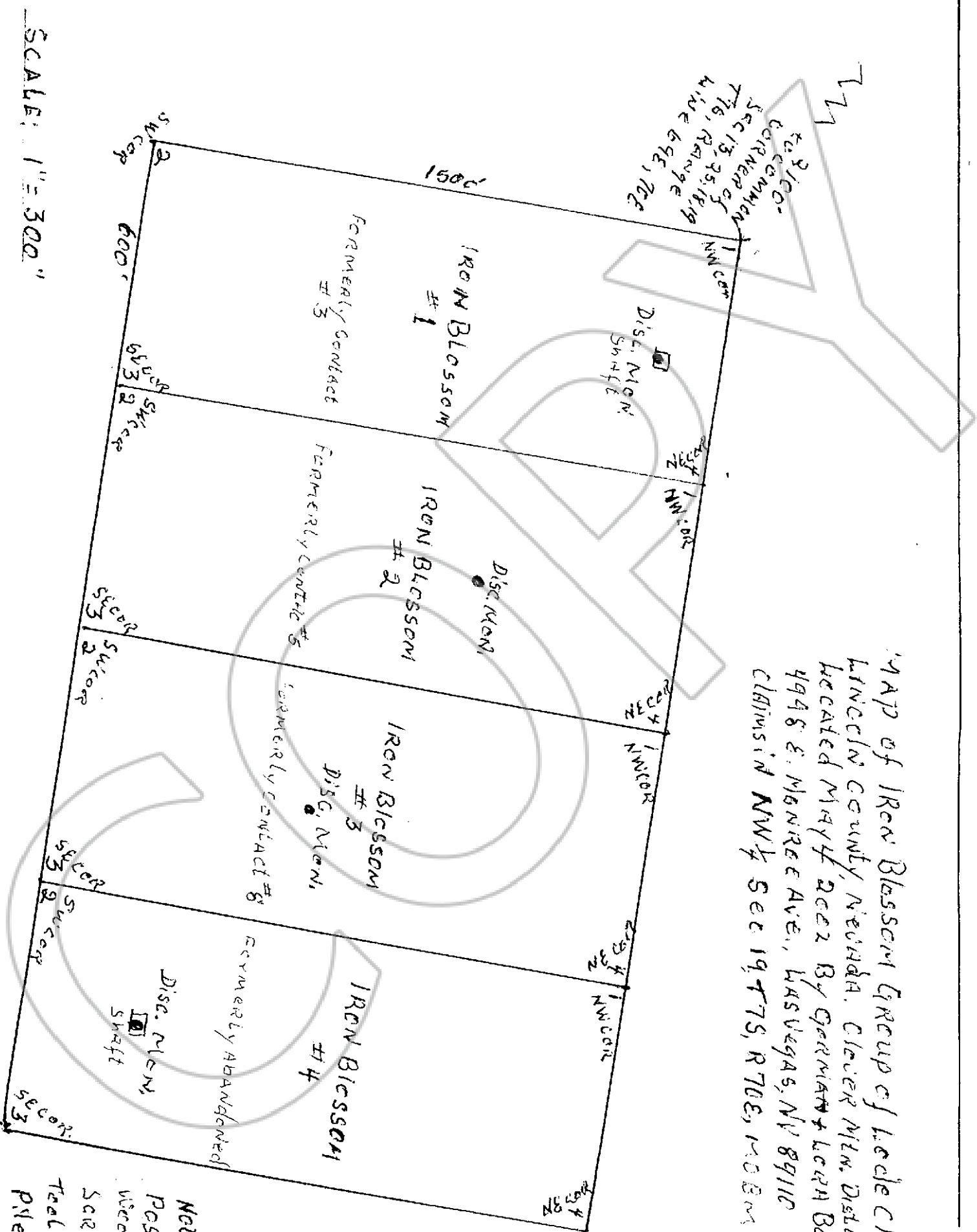


2100-
CORNER
Sec 13, 35, 18, 19
T16, RANGE
WINE 69E, 70E



MAP of Iron Blossom Group of lode claims
LINCOLN COUNTY, NEVADA. CLAYER MIN. DISTRICT
LOCATED MAY 4, 1922 BY GERMAN & LARA BAER
494 S. MANREE AVE., LAS VEGAS, NV 89102
CLAIMS IN NW 1/4 SEC 19, T7S, R70E, M00B0



SCALE: 1" = 300'

NOTE:
POSTS: 1 1/2" x 1 1/2"
WIRELESS POST
SCARDED WITH FIREMEL
TALS; TREE TRUNKS
PILES OF ROCK,

1 1 8 1 9 5

FILED FOR RECORDING
AT THE REQUEST OF

Gorman Deen

2002 MAY 23 PM 2 58

LINCOLN COUNTY RECORDED
FEE \$4.00 DEPT-105
LESLIE BOUCHER

2002 163 538

COPY