

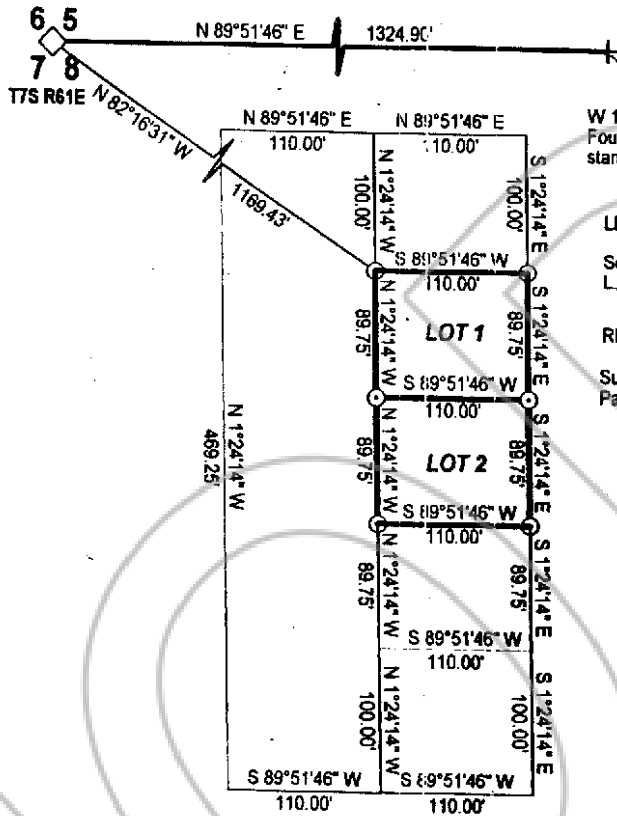
CORNER RECORD

Filed as required by Statutes of Nevada, 1959, Chapter 329

Sheet 1 of 1 sheets.

Sec. 8 Twp. 7 South Range 61 East, Mt. Diablo P.M.

County of _____ State of Nevada.



W 1/16th Corner
Found 5/8" rebar with cap
stamped L SMITH PLS 12751

LEGEND

Set 5/8" rebar with cap stamped
L SMITH PLS 12751

REFERENCE MAP

Subdivision Map Plat Book A,
Page 392



BLOCK 1 OF WILSON SUBDIVISION
ALAMO, NEVADA

For Lawrence Dillingham

SURVEYOR'S CERTIFICATE.

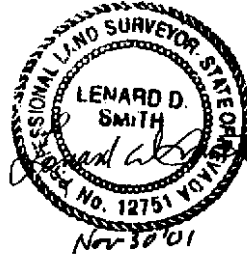
I, Lenard D. Smith Professional Land Surveyor No. 12751 in the State of Nevada do hereby certify that the foregoing is a true, complete and accurate representation of the monument, or monuments, established, reestablished, monumented, remonumented, restored, rehabilitated, perpetuated or used as control in any survey, and mentioned in the foregoing Corner Record.

Date survey was completed October 10, 2001

Date Corner Record filed _____

Accepted for filing on this _____ day of _____ 20

In the office of the County Recorder _____ County, State of Nevada.



County Recorder,

By _____

COPY

No. 117386

FILED AND RECORDED AT REQUEST OF
LEONARD SMITH

NOVEMBER 30, 2001

AT 15 MINUTES P.M. 02
P.M. 160

RECORDS PAGE 176 LINCOLN

COUNTY, NEVADA

LESLIE BOUCHER
COUNTY RECORDER

BY *Terese Lewis*, DEPUTY