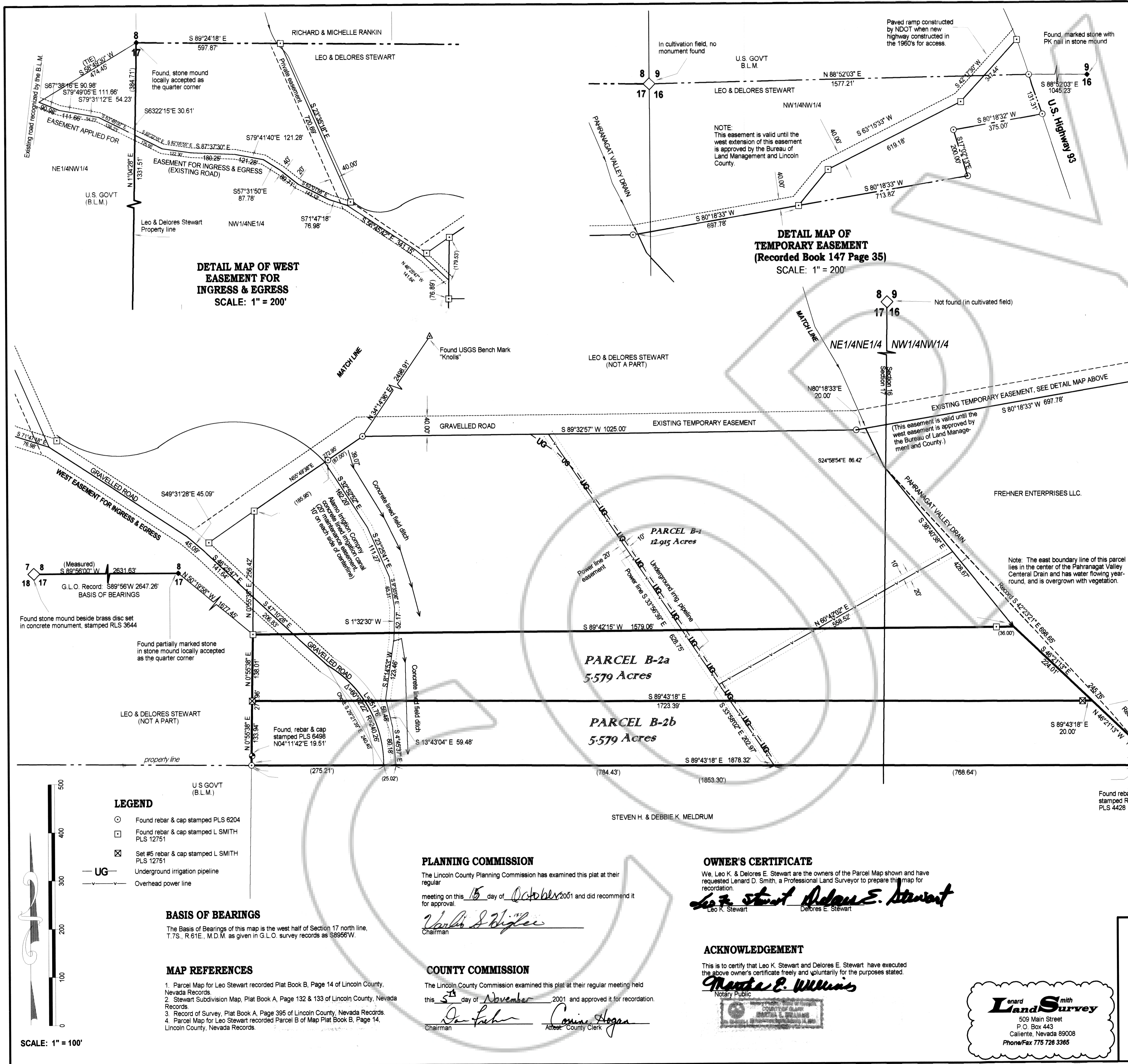


406



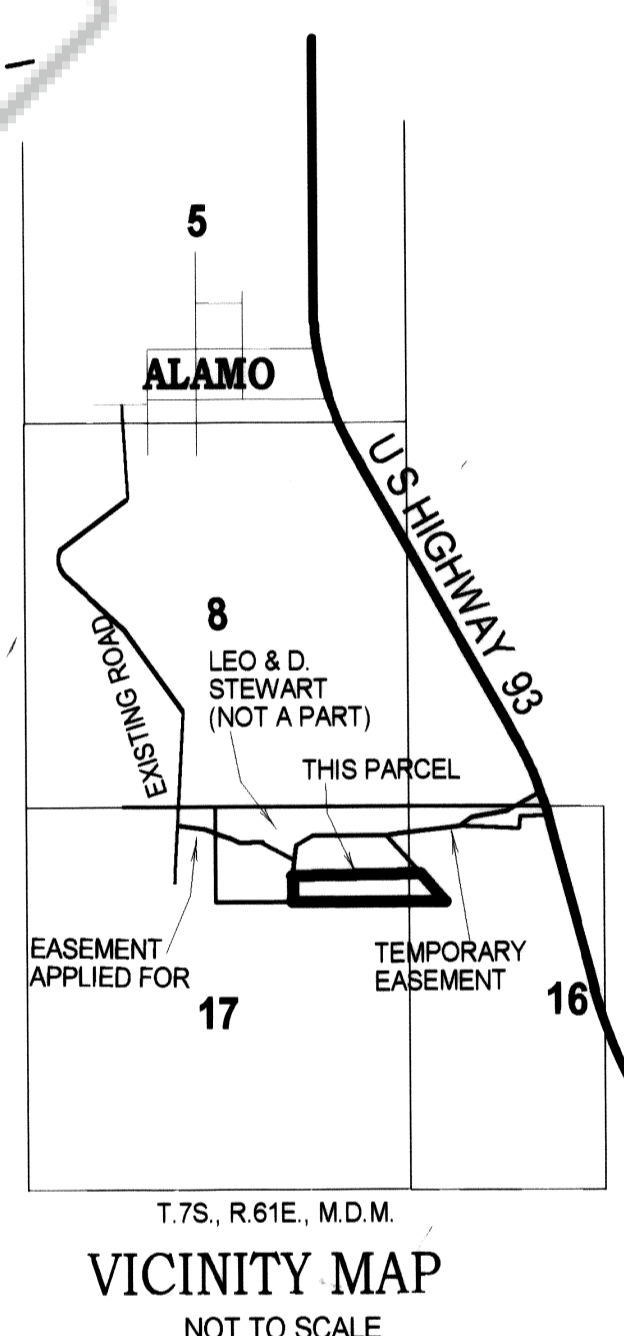
SURVEYOR'S CERTIFICATE

I, Lenard D. Smith, a Professional Land Surveyor licensed in the State of Nevada certify that:

- This plat represents the results of a survey conducted under my direct supervision at the instance of Leo K. and Delores Stewart.
- The lands surveyed lie within Sections 16 and 17, T.7S., R.61E., M.D.M. The survey was completed on September 25, 2000.
- This plat complies with the applicable state statutes and any local ordinances in effect on the date that the governing body gave its final approval.
- The monuments depicted on the plat are of the character shown, occupy the positions indicated and are of sufficient number and durability.

Lenard D. Smith
Lenard D. Smith, PLS 12751

LENARD D. SMITH
PROFESSIONAL LAND SURVEYOR STATE OF NEVADA
No. 12751
Nov. 5, 2001



PLANNING COMMISSION

The Lincoln County Planning Commission has examined this plat at their regular meeting on this 15 day of October 2001 and did recommend it for approval.

Wanda S. Bigler
Chairman

COUNTY COMMISSION

The Lincoln County Commission examined this plat at their regular meeting held this 24 day of November 2001 and approved it for recordation.

Don Fisher Chairman
Cornie Argue At-Large County Clerk

OWNER'S CERTIFICATE

We, Leo K. & Delores E. Stewart are the owners of the Parcel Map shown and have requested Lenard D. Smith, a Professional Land Surveyor to prepare this map for recordation.

Leo K. Stewart *Delores E. Stewart*

ACKNOWLEDGEMENT

This is to certify that Leo K. Stewart and Delores E. Stewart have executed the above owner's certificate freely and voluntarily for the purposes stated.

Maisha E. Williams
Notary Public



RECORDER'S CERTIFICATE

Recorded at the request of Lenard D. Smith
File number 117842
Filed Nov 5 2001
at 12:20 p.m.
Plat Book B, Page 406
LESLIE BOUCHER, RECORDER
Leslie Boucher
\$21.00

SUBSEQUENT PARCEL MAP
PARCEL B-2 OF MAP PLAT BOOK B, PAGE 351, LINCOLN COUNTY NEVADA RECORDS
IN THE NE1/4 SECTION 17 AND THE NW 1/4 SECTION 16, T.7S., R.61E., M.D.M.
FOR LEO K. & DELORES STEWART

SCALE: 1" = 100'