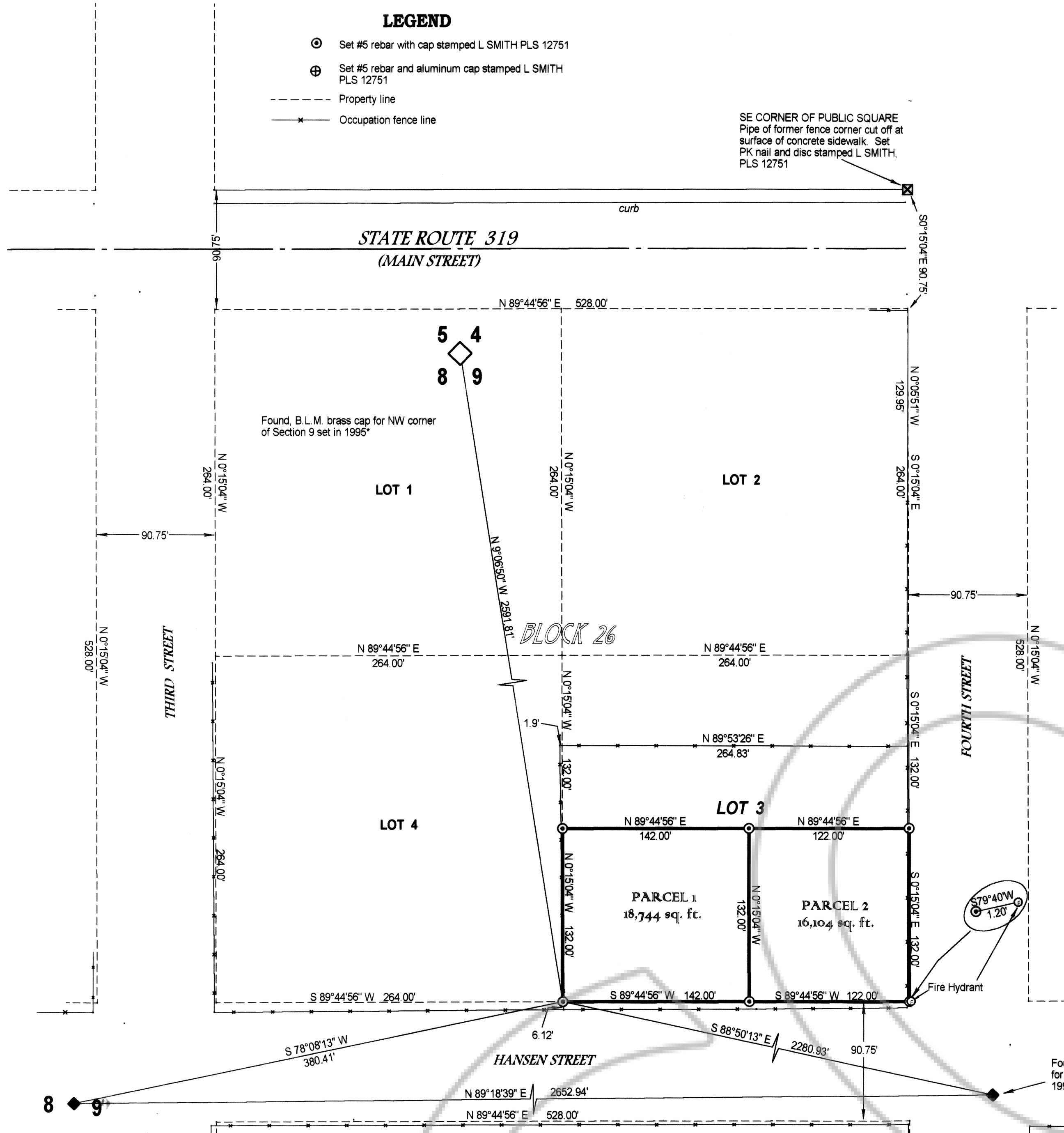


LEGEND

- Set #5 rebar with cap stamped L SMITH PLS 12751
- ⊕ Set #5 rebar and aluminum cap stamped L SMITH PLS 12751
- - - Property line
- Occupation fence line

SE CORNER OF PUBLIC SQUARE
Pipe of former fence corner cut off at
surface of concrete sidewalk. Set
PK nail and disc stamped L SMITH,
PLS 12751



OWNER'S CERTIFICATE

I certify that I am the owner of the land as depicted on this plat, and that I have requested Lenard D. Smith, a Professional Land Surveyor to prepare this map for recordation.

Helen W. O'Connor
Helen W. O'Connor

ACKNOWLEDGEMENT

I certify that Helen W. O'Connor personally appeared before me, Notary Public and did execute the above Owner's Certificate freely and voluntarily for the purposes stated.

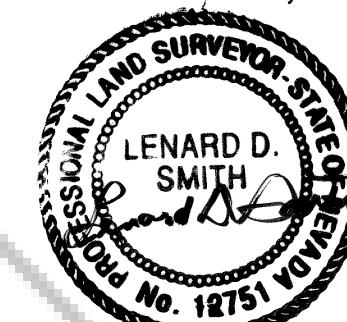
Margaret H. Jones
Notary Public



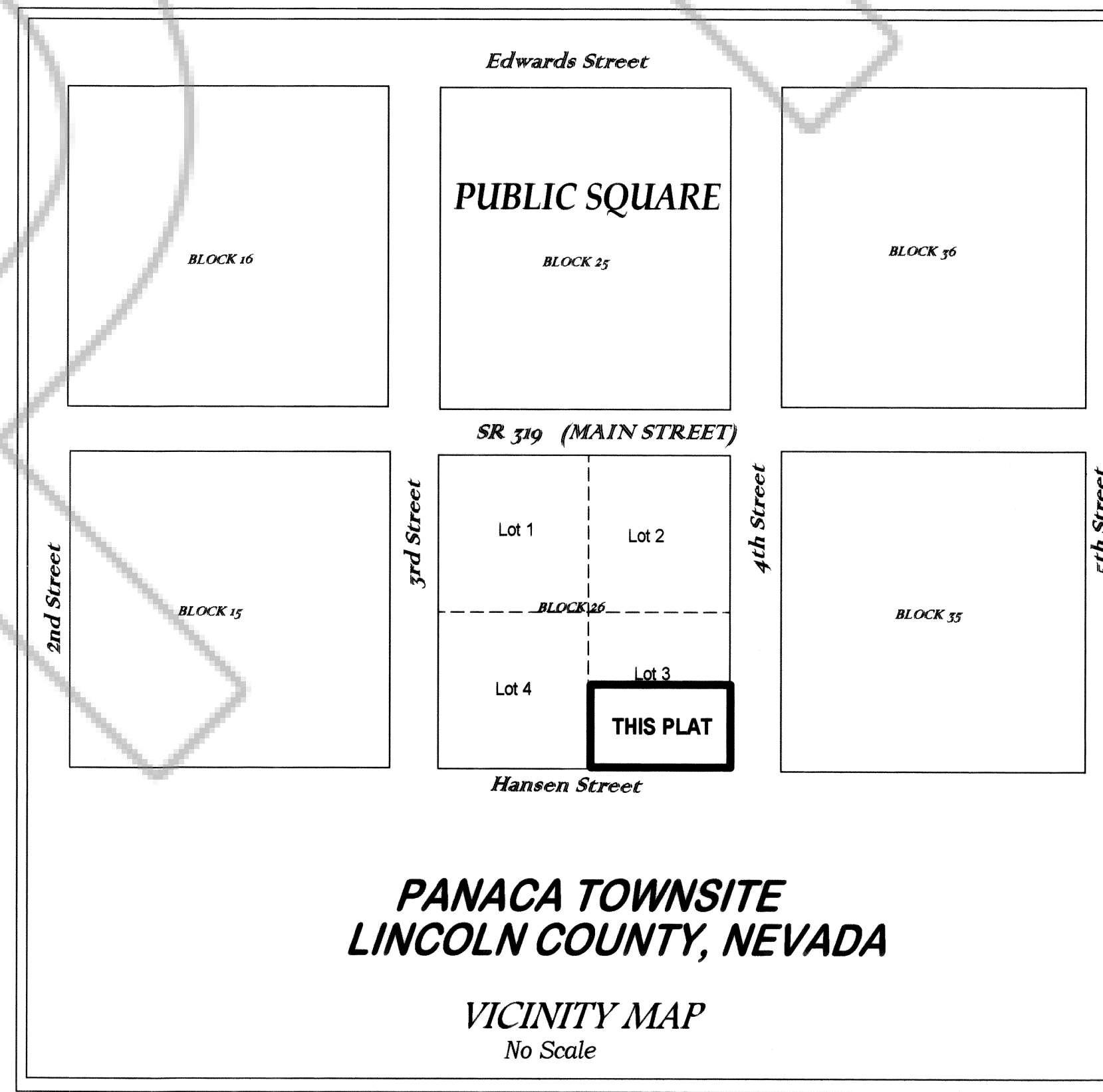
SURVEYOR'S CERTIFICATE

I, Lenard D. Smith, a Professional Land Surveyor licensed in the State of Nevada, certify that:

1. This plat represents the results of a survey conducted under my direct supervision at the instance of Helen W. O'Connor.
2. The lands surveyed lie within Section 9, Township 2 South, Range 68 East, M.D.M. The survey was completed on July 31, 2001.
3. This plat complies with the applicable state statutes and any local ordinances in effect on the date that the governing body gave its final approval.
4. The monuments depicted on the plat are of the character shown, occupy the positions indicated and are of sufficient number and durability.



Sept 27, 2001
Lenard D. Smith P.L.S. 12751



**PANACA TOWNSITE
LINCOLN COUNTY, NEVADA**

VICINITY MAP
No Scale

SCALE: 1" = 60'

BASIS OF BEARINGS

The north line of Section 8 as shown on the TOWN OF PANACA ANNEXATION MAP LINCOLN COUNTY, NEVADA RECORDS, BOOK B PAGE 90

MAP NOTES AND REFERENCE

1. Annexation Map for the Town of Panaca, Lincoln County, Nevada filed Book B, Page 90, Lincoln County, Nevada Records.
2. * The Section corner monuments shown are the result of a Dependent B.L.M. Resurvey (monuments set in 1995) which has not as yet been approved.
3. This plat was constructed using the southeast corner of the Public Square as the basis and beginning of measurements.



RECORDER'S CERTIFICATE

File number 117190
Recorded at the request of Lenard D. Smith
Filed in Plat Book B, Page 405
This 24th day of October, 2001
at 3:30 p.m.
LESLIE BOUCHER, RECORDER
By Jensen Deputy

ASSESSORS PARCEL
No. 2-053-02

PARCEL MAP

DIVIDING THE SOUTH HALF OF LOT 3,
BLOCK 26, PANACA TOWNSITE,
LINCOLN COUNTY, NEVADA

FOR HELEN W. OCONNOR

PLANNING COMMISSION

At the regular meeting of the Lincoln County Planning Commission held this

13th day of August, this plat was examined and recommended for approval.
Anna R. Heintzel
Chairman

COUNTY COMMISSION

At the regular meeting for the Lincoln County Board of Commissioners held this

21st day of Sept, 2001 this plat was examined and approved for recordation.
Don Fisher Chairman
Carine Hagen Attest