

LOCATOR:

GERALD W. BAUGHMAN  
P.O. Box 18127  
Reno, NV 89511

LOCATION:

Sections 7, 18 T1N, R71E  
Section 13, T1N, R70E  
Lincoln County, Nevada

TIE POINT:

The NE corner of GBM 8 is 1500' N2W & 1200' NG6W of the SE Corner of Section 7, T1N, R71E, MDBM.

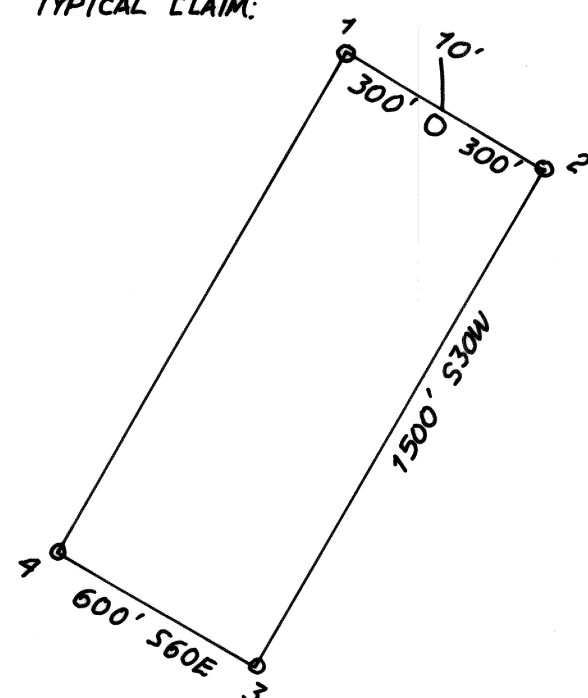
LOCATION DATES:

3/28/01 GBM 6, 12-14, 17-22  
3/31/01 GBM 7-8

NOTES:

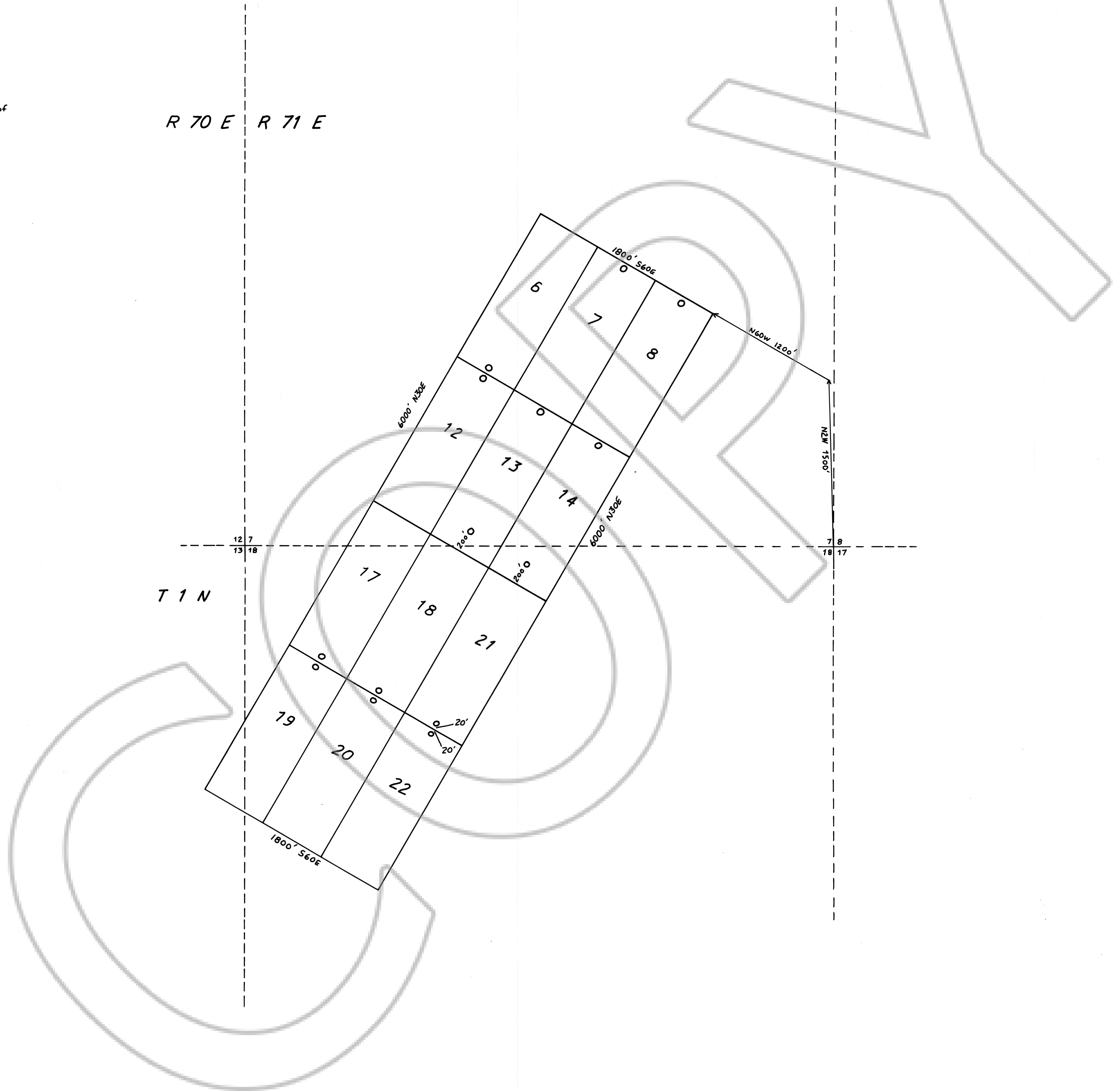
All claims are 1500'x600', with location monuments 10' in from end center, except as noted.  
All monuments are 2" x 2" x 4' long wooden posts with scribed metal tags.

TYPICAL CLAIM:



R 70 E R 71 E

T 1 N



NO. 116525  
FILED AND RECORDED AT REQUEST OF  
Gerald W. Baughman  
June 26, 2001  
AT 3:55 MINUTES P.M. 04 OF BOOK  
P.M. BOOK 156 OF OFFICIAL  
RECORDS PAGE 34  
COUNTY CLERK  
Leslie Duxler  
COUNTY RECORDER  
By Ceresa Sewert  
Deputy

|   |                    |               |
|---|--------------------|---------------|
| GBM 6-8, 12-14, 17-22<br>LODE MINING CLAIMS |                    |               |
| Scale: 1"=500'                              | Located: 3/28/01   | Drawn By: DRB |
|   | Completed: 3/31/01 | Revised:      |
| Map 1 of 1                                  |                    |               |