

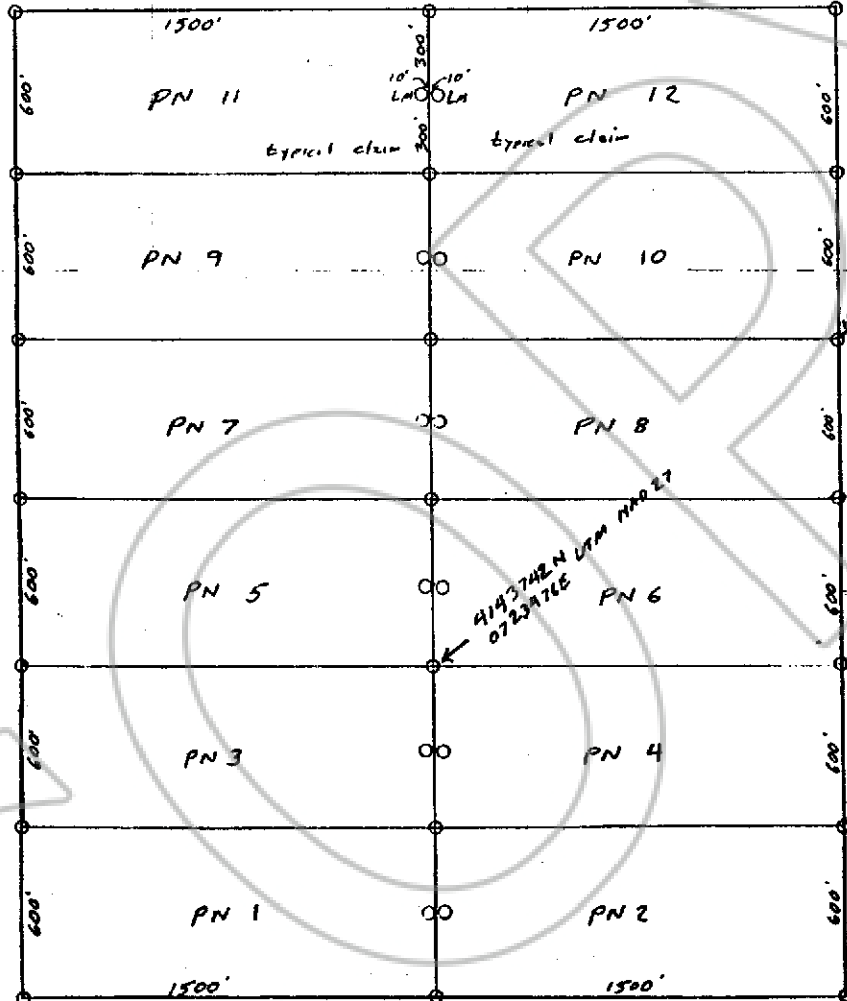
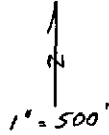
Lincoln County

PN Lode Mining Claims

Sections 15 and 22 of T. 6 S., R. 67 E.  
Lincoln County, Nevada

Located on the 23rd Day  
of February, 2001 by:  
Nevada Sunrise, LLC (NSL)  
6121 Lakeside Drive  
Reno, Nevada 89511

All corner and location  
posts are 2" by 2" by 4"  
long wood posts with a  
metal tag describing the  
corner or location.



to Canon Spring  
1,850' S.

RECEIVED  
Bur. of Land Management

7:30  
A.M. MAR - 7 2001

NEVADA STATE OFFICE  
RENO, NEVADA

NO. 116126

FILED AND RECORDED AT REQUEST OF  
NEVADA SUNRISE LLC  
MARCH 29, 2001

AT 13 MINUTES PAST 03 O'CLOCK  
PM IN BOOK 154 OF OFFICIAL  
RECORDING PAGE 69 LINCOLN  
COUNTY, NEVADA.

LESLIE BOUCHER  
COUNTY RECORDER  
BY Doreen Lawrence  
DEPUTY